

ROCKY MOUNTAIN

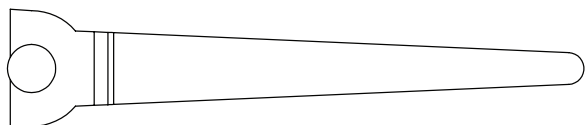
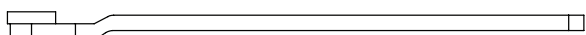
H A R D W A R E

Sash Lock- LC600 Installation instructions

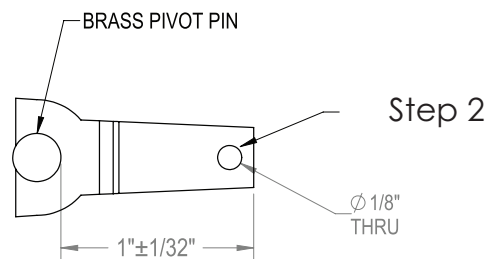
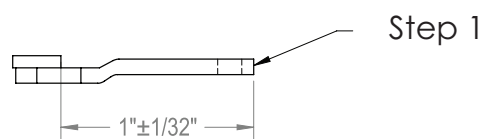
Step 1 - Cut arm to length. A dremel tool with a metal cut off wheel works well for this.

Step 2 - To locate the hole, remove set screw and slide the bronze sash lock over the "cut" arm and mark. Remove bronze sash lock, then drill hole. The set screw will pass thru this hole in the arm to hold the sash lock in place.

Sash Lock Arm before modifying



Sash Lock Arm after modifying



Tools Required:

1. .050" allen wrench (For set screw)
2. 1/8" drill bit (To drill hole in sash lock arm)
3. 3/32" drill bit (For bezel, wood screw pilot holes)
4. Vice grips or equivalent
5. Die grinder or equivalent (To cut arm to length)
6. Flat head screw driver (For #6 mounting screws)
7. Ruler or equivalent (To measure location to cut arm)

