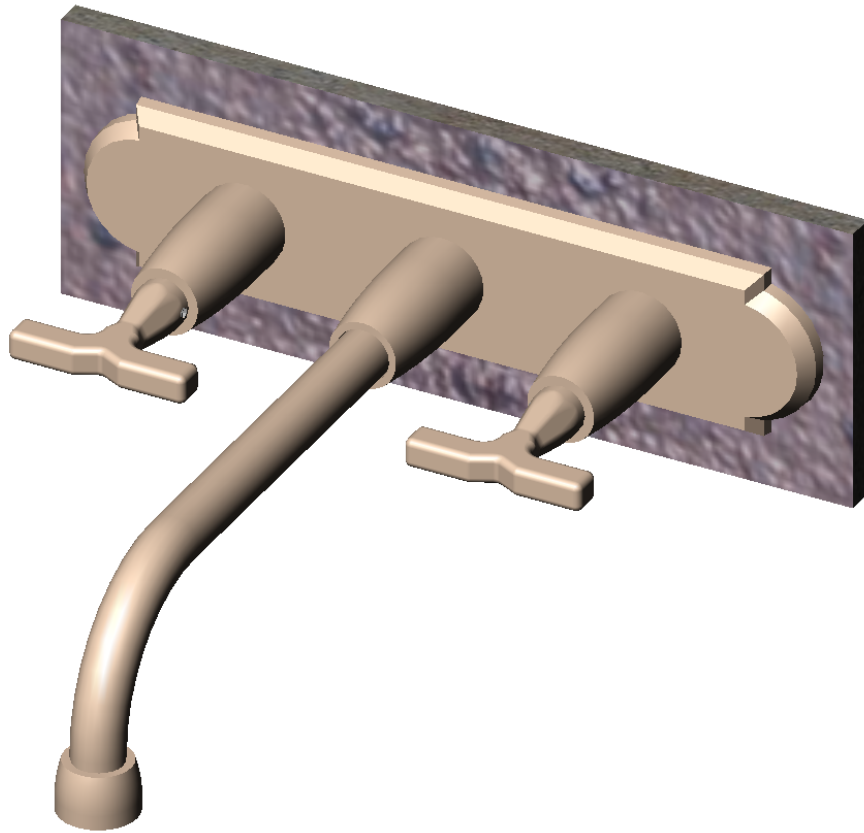


# WALL MOUNT FAUCET INSTALLATION INSTRUCTIONS

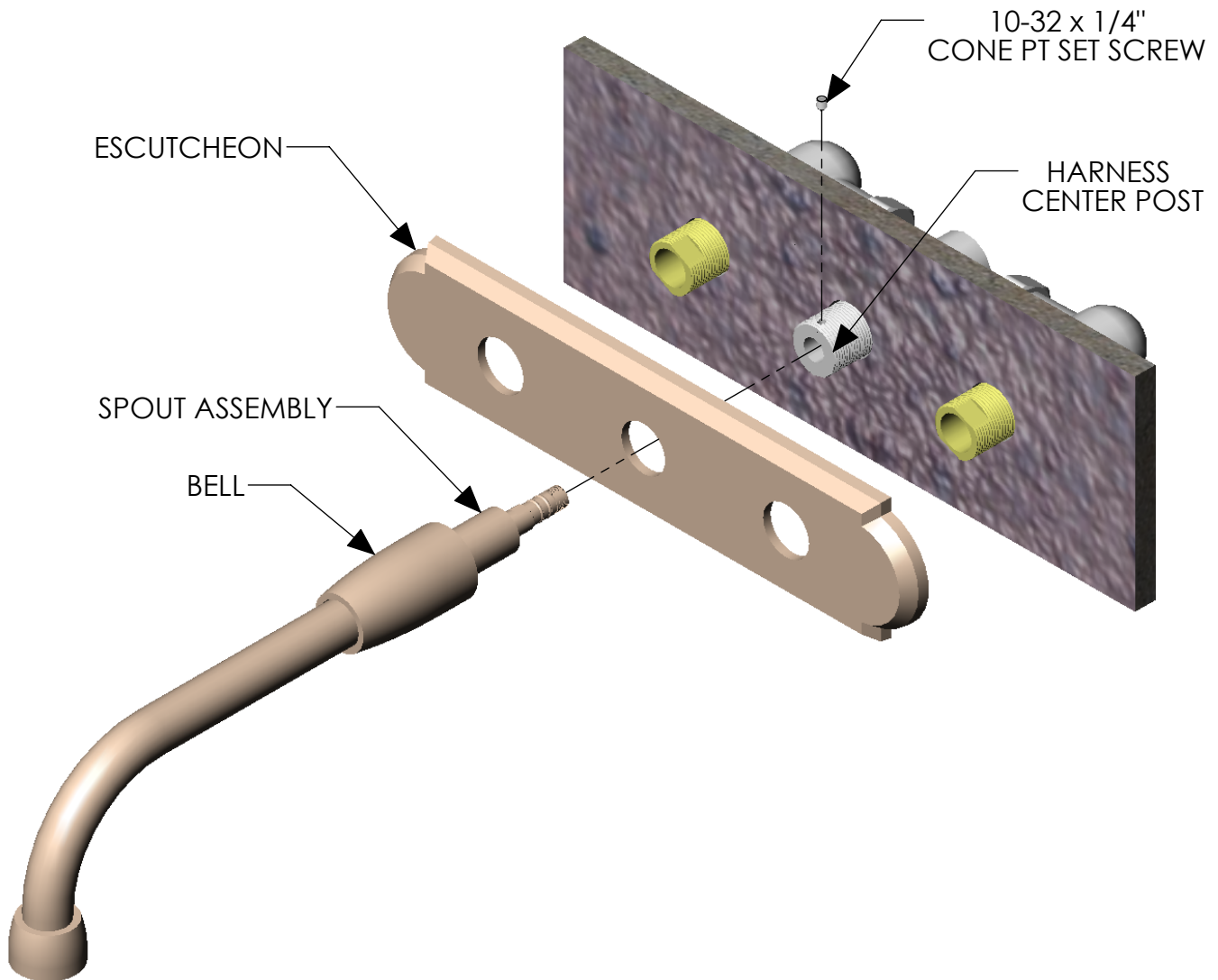


TOOLS REQUIRED: 1/4" FLAT HEAD SCREW DRIVER  
3/32" ALLEN WRENCH  
3/16" DRILL BIT AND DRILL



1030 Airport Way Post Office Box 4108 Hailey, Idaho 83333  
Toll Free (888) 788.2013 Fax (208) 788.2577  
rockymountainhardware.com

# SPOUT INSTALLATION

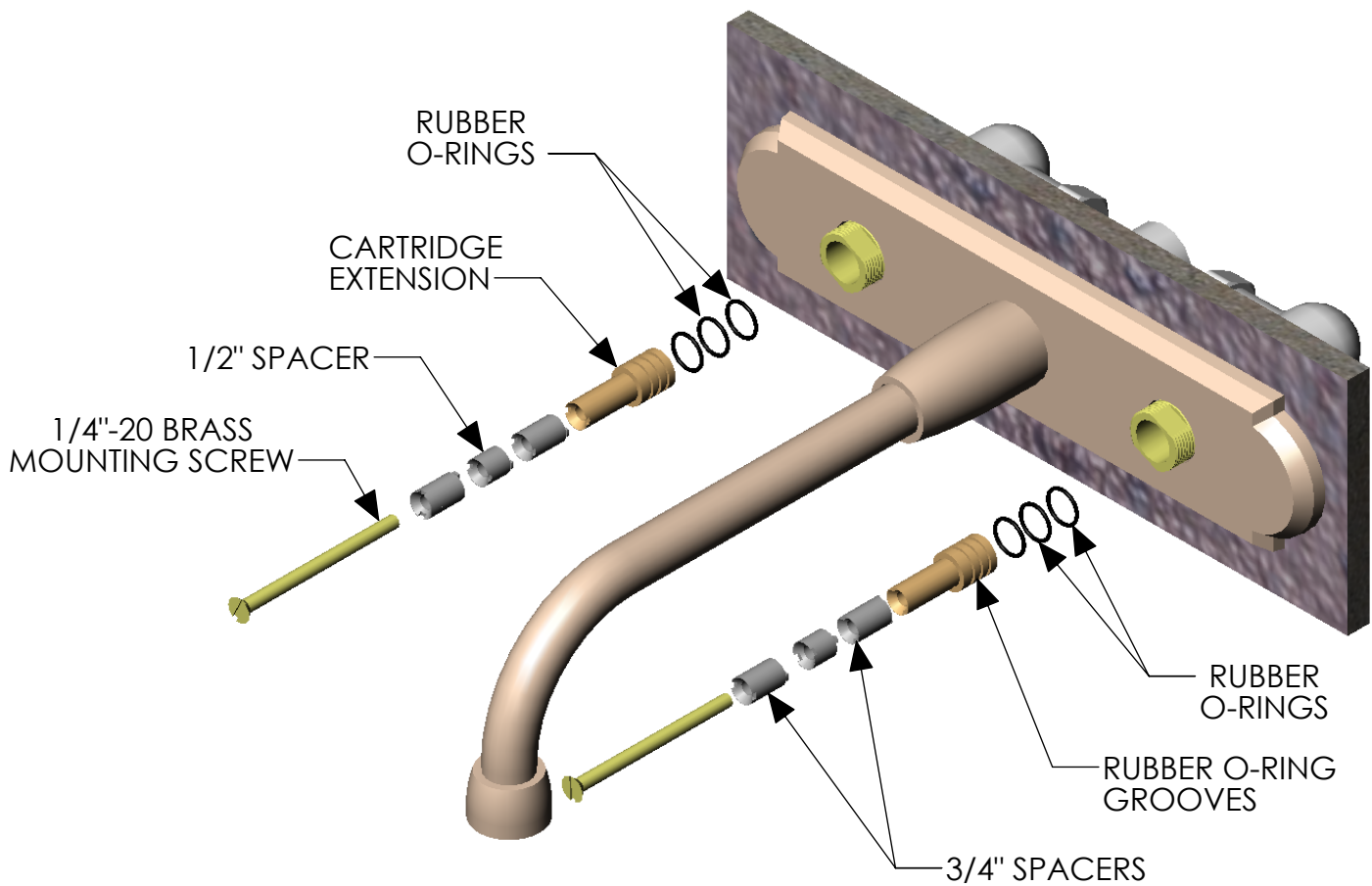


- 1) Verify threaded center spout of harness protrudes 7/8" minimum from finished wall. (If harness protrudes less than 7/8" call 1-888-788-2013 for recommendations.)
- 2) Place escutcheon over harness posts. (escutcheon optional)
- 3) Slide bell over spout assembly. Insert spout into harness center post and tighten set screw.
- 4) Thread bell onto harness center post until tight against escutcheon or finished wall.

**ROCKY MOUNTAIN**  
H A R D W A R E

1030 Airport Way Post Office Box 4108 Hailey, Idaho 83333  
Toll Free (888) 788.2013 Fax (208) 788.2577  
rockymountainhardware.com

# VALVE CARTRIDGE EXTENSIONS INSTALLATION

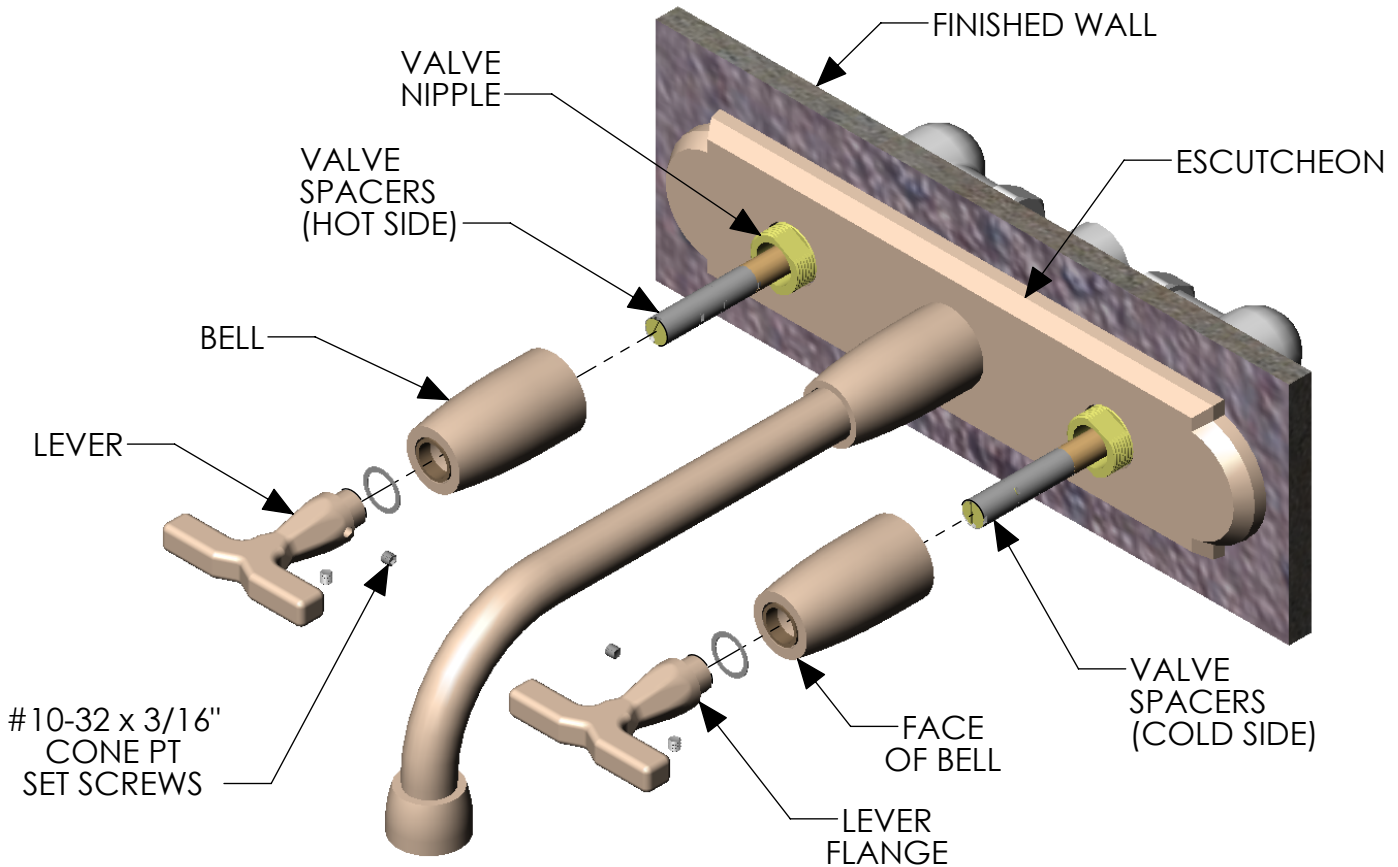


- 1) Rubber O-Rings on Cartridge Extension add resistance to rotation. Inspect after 15 years.
- 2) Use 1/4"-20 brass mounting screw to secure cartridge extension and spacers as required. (Note: The number and length of spacers may vary for each application.)

**ROCKY MOUNTAIN**  
H A R D W A R E

1030 Airport Way Post Office Box 4108 Hailey, Idaho 83333  
Toll Free (888) 788.2013 Fax (208) 788.2577  
rockymountainhardware.com

# LEVER INSTALLATION PG 1

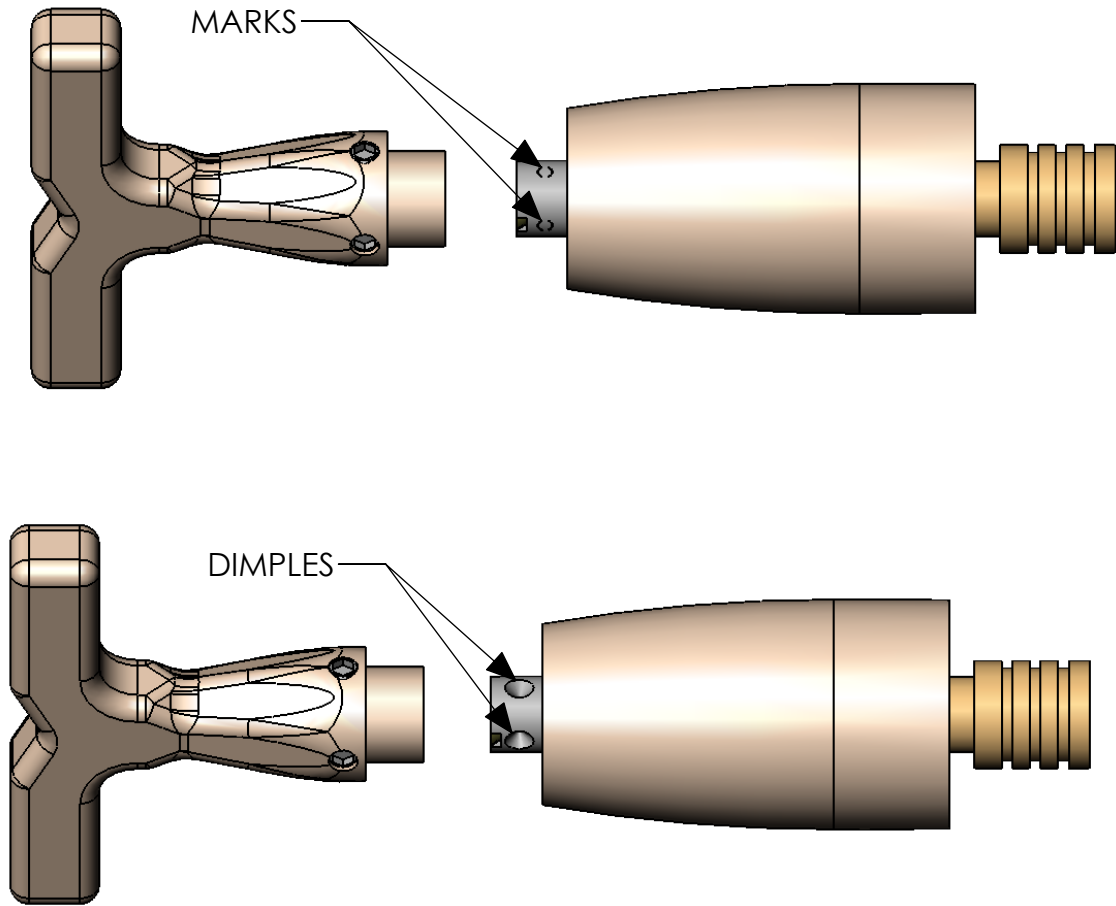


- 1) Thread bells over valve nipples until tight against escutcheon or finished wall.
- 2) Turn valves to the closed position by rotating valve spacers. The cold valve will close by rotating counter clockwise and the hot valve will close by rotating clockwise.
- 3) Slide levers over valve spacers in the desired closed orientation leaving approximately 1/32" gap between lever flange and bell. Typically levers are closed in the horizontal position. Tighten both set screws on each lever to leave a mark on the valve spacers.

**ROCKY MOUNTAIN™**  
H A R D W A R E

1030 Airport Way Post Office Box 4108 Hailey, Idaho 83333  
Toll Free (888) 788.2013 Fax (208) 788.2577  
rockymountainhardware.com

# LEVER INSTALLATION PG 2



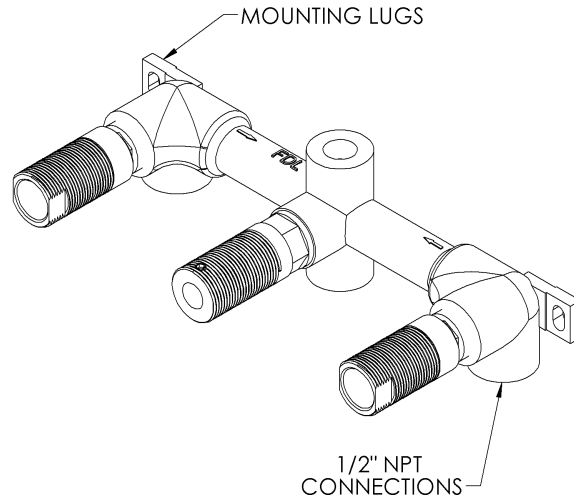
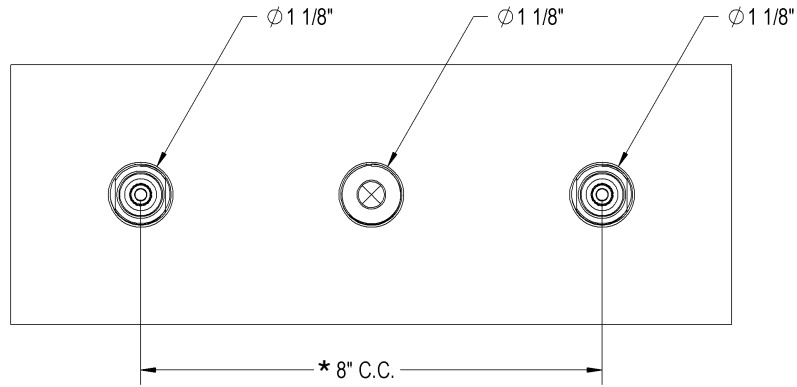
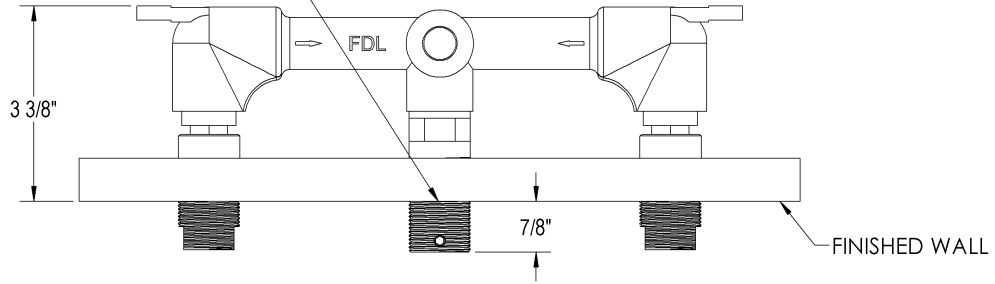
- 4) Loosen set screws and remove levers.
- 5) Using a 3/16" drill bit, drill valve spacer 1/16" deep in center of marks made by tightening set screws in step 3 of lever installation. (CAUTION: DO NOT DRILL DEEPER THAN THE BEVEL OF THE DRILL BIT)
- 6) Re-install levers over valve spacers and tighten set screws so they fall into dimples created in step 5 of lever installation.



1030 Airport Way Post Office Box 4108 Hailey, Idaho 83333  
 Toll Free (888) 788.2013 Fax (208) 788.2577  
[rockymountainhardware.com](http://rockymountainhardware.com)

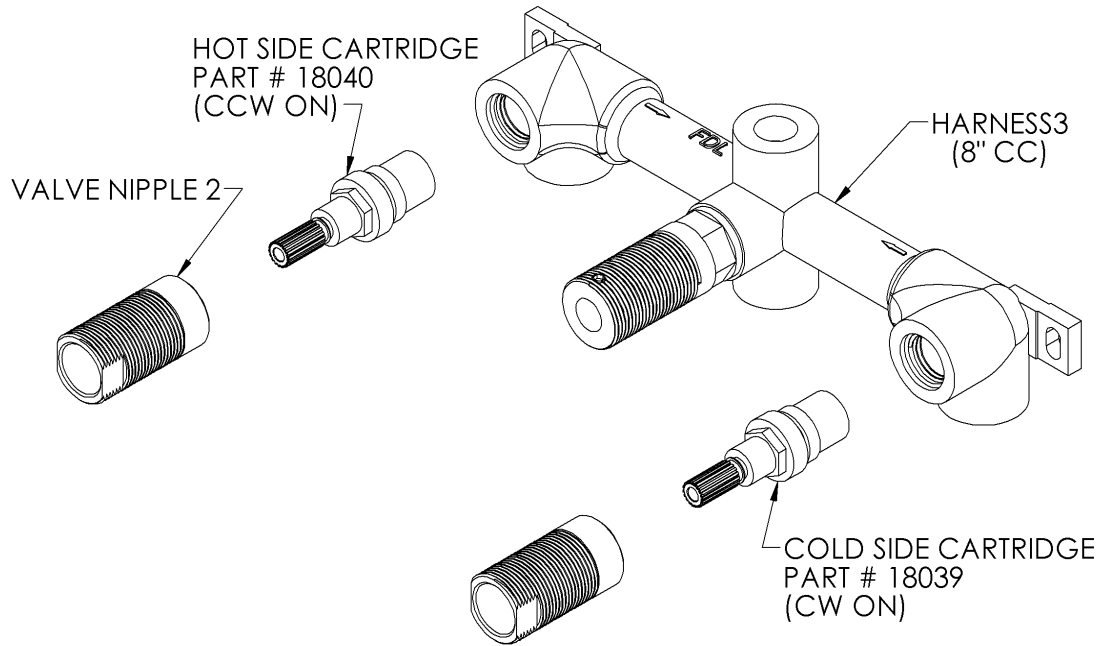
# WMF HARNES INSTALL

NOTE: RED DOT ON CENTER POST OF ROUGH-IN SHOULD LINE UP WITH THE FACE OF THE FINISHED WALL.



\* Confirm with actual harness (7" C.C. prior to 2018).

# WMF CARTRIDGE REPLACEMENT INSTRUCTIONS



**WARNING:**

**Water supply must be shut off prior to removing cartridges and valve nipples.**

- 1 Break apart old cartridge from valve nipple
- 2 Replace cartridge
- 3 Using a 5/8" deep socket tighten cartridge to 25 ft-lbs
- 4 Using a 13/16" wrench, tighten the valve nipple to the cartridge to 20 ft-lbs