

Sample Order / Cheat Sheet
T Lighting 1/4

QUOTE ORDER

NAME: _____

PO#: _____

ADDRESS: _____

DELIVERY: _____

ADDRESS: _____



ORDER DATE: _____

OFFICE PHONE: _____

CONTACT: _____

FAX PHONE: _____

JOB NAME: _____

JOB PHONE: _____

HARDWARE WORK ORDER
TOLL FREE 888.788.2013 OR 208.788.2013; FAX 208.788.2577

LINE #	FUNCTION	FIXTURE	ESCUTCHEON	METAL	PATINA	LENGTH	OPTIONS	SHADE OPTIONS	DESCRIPTION	LOCATION	QUANTITY	PRICE QUOTED
1	LT	PE435-LED	E403	B	BB					101	1	\$ 2,491
2	LT	WS410	E155	W	M				LBK	101	1	\$ 2,397
3	LT	V450	E419	B	D	26				112	1	\$ 3,814
4	LT	WS421	G520	W	BB					100	1	\$ 2,304
5	LT	C500		W	D	60	C, P	CSW		125	1	\$ 14,262
6	LT	C450	G4513	B	L	104				127	1	\$ 9,278

FUNCTION

LT-D = Lighting,
Damp Location
LT-W = Lighting,
Wet Location
AC = Accessory

FIXTURE

See following page.

ESCUTCHEONS

E155 = 5 1/2" x 5 1/2"
Square Designer
E280 = 5 1/2" x 5 1/2" Metro
E403 = 5 1/2" x 5 1/2" Square
E419 = 6 1/2" Round
E560 = 6 1/2" x 13" Oval
G153 = 5 1/2" x 13"
Rectangular Designer
G290 = 5 1/2" x 13" Metro
G291 = 4" x 30" Metro
G504 = 23/4" x 20" Curved
G520 = 5" x 20" Curved
G4513 = 5 1/2" x 13"
Rectangular

METAL

B = Silicon Bronze
W = White Bronze

PATINA

L = Light
M = Medium
D = Dark
R = Rust
BB = Brushed
DL = Dark Lustre
HP = High Polished *
*Up-charge applies.

LENGTH

Vanity V450 & V455
26 = 26"
40 = 40"
54 = 54"
68 = 68"
82 = 82"
94 = 94"
Chandelier C450 & C455
Specify up to 104"
Chandelier C500
Specify up to 77"
Chandelier C525
Specify up to 73"

OPTIONS

C = Crystals
P = Prisms

SHADE OPTIONS

CSW = Cone Shade White
CSF = Cone Shade Flax
CST = Cone Shade Taupe
CSB = Cone Shade Black
DSW = Drum Shade White
DSF = Drum Shade Flax
DST = Drum Shade Taupe
DSB = Drum Shade Black
DS2W = Drum Shade 2 White
DS2F = Drum Shade 2 Flax
DS2T = Drum Shade 2 Taupe
DS2B = Drum Shade 2 Black

DESCRIPTION

Leather Options
LBK = Black Leather
LBT = Brown Tapestry Leather
LBW = Brown Weave Leather
LCH = Chocolate Leather
LHA = Hazelnut Leather
LSP = Spice Leather
LWH = White Leather
LWI = Wine Leather

Texture Options Not Available

LOCATION #

Room Number or Door Number,
etc.

QUANTITY

Number of each desired

QUOTED PRICE

\$ List price each

LIGHTING FIXTURE

- C400FB = Cube Chandelier with Flat Box
- C400CB = Cube Chandelier with Corrugated Box
- C405FB = Double Cube Chandelier with Flat Box
- C420 = Linear Chandelier
- C450* = Cross Arm Chandelier with Round Glass
- C455* = Cross Arm Chandelier with Square Glass
- C500* = 5-Arm Chandelier
- C525* = 3-Arm Chandelier

- CF485 = Crosby Ceiling Light

- LG400 = Pathway Light

- PE425 = Foxtrot Pendant
- PE430 = Delta Pendant
- PE435 = Charlie Pendant
- PE450 = Bravo Pendant
- PE455 = Alpha Pendant
- PE465 = Echo Pendant
- PE490 = Luna Pendant
- PE523 = Ethel Pendant
- PE525 = Lucy Pendant
- PE530 = Cargo Pendant
- PE532 = Madison Pendant
- PE625 = Torch Pendant
- PE627 = Icicle Pendant

- V440 = Triple Plank with Flat Glass
- V445 = Triple Plank with Corrugated Glass
- V450* = Lantern Vanity with Round Glass
- V455* = Lantern Vanity with Square Glass

- WS400 = Post Sconce with Round Glass
- WS405 = Post-Ring Sconce with Round Glass
- WS410 = Truss Sconce with Round Glass
- WS415 = Truss-Ring Sconce with Round Glass
- WS416 = Truss Sconce with Square Glass
- WS418 = Truss-Ring Sconce with Square Glass
- WS419 = Charlie Sconce
- WS420 = Double Tunnel Sconce
- WS421 = Mod Sconce
- WS423 = Double Charlie Sconce
- WS425 = Small Vessel Sconce
- WS430 = Vessel Sconce
- WS440 = Plank Sconce with Flat Glass
- WS445 = Plank Sconce with Corrugated Glass
- WS465 = Lantern Sconce
- WS466 = Dice Sconce
- WS468 = Gateway Sconce
- WS480 = Tunnel Sconce
- WS500 = Towne Sconce
- WS590 = Echo Sconce

DESCRIPTION

Glass Shades — Replacement

- Corrugated Flat 20
- Corrugated Plank 20
- Curve Slump 3.5
- Curve Slump 4
- Flat 20
- Flat 40
- Flat 50
- Globe 001
- Globe 002
- Globe 004
- Globe 001-W
- Globe 004-W
- Globe 005
- Globe 010
- Mod Glass
- Plank 20
- Shade 425
- Shade 6
- Shade 10
- Square Slump 7
- S Tube 001
- S Tube 003

*See page Ti for available lengths.

Sample Order / Cheat Sheet
T Lighting 3/4

ESCUTCHEON CHOICES

UL RATING

LIGHTING OPTIONS		ESCUTCHEON CHOICES											UL RATING		
FIXTURE	PART	G4513 5 1/2 X 13	E403 5 1/2 SQ	E560 6 1/2 X 13	E419 6 1/2 RD	G290 5 1/2 x 13	E280 5 1/2 SQ	G153 5 1/2 X 13	E155 5 1/2 SQ	G504 2 3/4 X 20	G520 5 X 20	G291 4 X 30	DAMP	WET	LED
CUBE CHANDELIER FLAT GLASS	C400FB	•				•		•					•		•
CUBE CHANDELIER CORRUGATED GLASS	C400CB	•				•		•					•		•
DOUBLE CUBE CHANDELIER FLAT GLASS	C405FB		•		•		•		•				•		
LINEAR CHANDELIER	C420		•		•		•		•						•
CROSS ARM CHANDELIER ROUND GLASS	C450	•				•		•					•		•
CROSS ARM CHANDELIER SQUARE GLASS	C455	•				•		•					•		•
FIVE-ARM CHANDELIER TOWNE	C500				•								•		
THREE-ARM CHANDELIER TOWNE	C525				•								•		
ALPHA PENDANT SQUARE GLASS	PE455		•		•		•		•				•		•
BRAVO PENDANT ROUND GLASS	PE450		•		•		•		•				•		•
CHARLIE PENDANT SQUARE GLASS	PE435		•		•		•		•				•		•
FOXTROT PENDANT SQUARE GLASS	PE425		•		•		•		•				•		•
DELTA PENDANT SQUARE GLASS	PE430		•		•		•		•				•		•
ECHO PENDANT SQUARE GLASS	PE465		•		•		•		•				•		•
LUNA PENDANT	PE490		•		•		•		•				•		
ETHEL PENDANT	PE523				•				•				•		•
LUCY PENDANT	PE525				•				•				•		•
CARGO PENDANT ROUND GLASS	PE530		•		•		•						•		
MADISON PENDANT	PE532		•		•		•						•		•
TORCH PENDANT	PE625		•		•		•		•				•		•
IGICLE PENDANT	PE627		•		•		•		•				•		•
LANTERN VANITY ROUND GLASS	V450 26-94		•		•		•		•				•		•
LANTERN VANITY SQUARE GLASS	V455 26-94		•		•		•		•				•		•
TRIPLE PLANK FLAT VANITY	V440												•		•
TRIPLE PLANK VANITY CORRUGATED	V445												•		•
PLANK SCONCE FLAT GLASS	WS440												•		•
PLANK SCONCE CORRUGATED GLASS	WS445												•		•
POST SCONCE ROUND GLASS	WS400	•	•	•	•	•	•	•	•				•	•	•
POST RING SCONCE ROUND GLASS	WS405	•	•	•	•	•	•	•	•				•	•	•
TRUSS SCONCE ROUND GLASS	WS410	•	•	•	•	•	•	•	•				•	•	•
TRUSS RING SCONCE ROUND GLASS	WS415	•	•	•	•	•	•	•	•				•	•	•
TRUSS SCONCE SQUARE GLASS	WS416	•	•	•	•	•	•	•	•				•	•	•
TRUSS RING SCONCE SQUARE GLASS	WS418	•	•	•	•	•	•	•	•				•	•	•
CHARLIE SCONCE SQUARE GLASS	WS419	•	•	•	•	•	•	•	•				•		•

- These fixtures must be mounted or supported independently of an outlet box.
- Glass is individually hand formed for every fixture, thus no two pieces will look exactly alike.

Light Emitting Diodes (LED) Lighting Information

- Fixtures with LED options carry an up charge
- Dimmable
- Low Voltage
- Green—no lead no mercury
- 50,000 hours of lamp life
- Instant on/off performance
- Energy savings up to 80%
- Meets California's Title 24 lighting requirements

ESCUTCHEON CHOICES

UL RATING

LIGHTING OPTIONS		G4513	E403	E560	E419	G290	E280	G153	E155	G504	G520	G291	DAMP	WET	LED
FIXTURE	PART	5 1/2 X 13	5 1/2 SQ	6 1/2 X 13	6 1/2 RD	5 1/2 x 13	5 1/2 SQ	5 1/2 X 13	5 1/2 SQ	2 3/4 X 20	5 X 20	4 X 30			
DOUBLE TUNNEL SCONCE	WS420											•	•		•
ECHO SCONCE SQUARE GLASS	WS590	•	•	•	•	•	•	•	•				•		•
LANTERN SCONCE	WS465	•	•			•	•						•	•	•
MOD SCONCE	WS421									•	•		•		•
DOUBLE CHARLIE SCONCE	WS423		•		•		•		•			•	•		•
SMALL VESSEL SCONCE	WS425												•		•
LARGE VESSEL SCONCE	WS430												•		•
TUNNEL SCONCE	WS480												•		•
TOWNE SCONCE	WS500	•	•	•	•	•	•	•	•				•		•
DICE SCONCE	WS466												•		•
GATEWAY SCONCE	WS468												•		•
PATHWAY LIGHT	LG400													•	•
CROSBY CEILING LIGHT	CF485												•		•

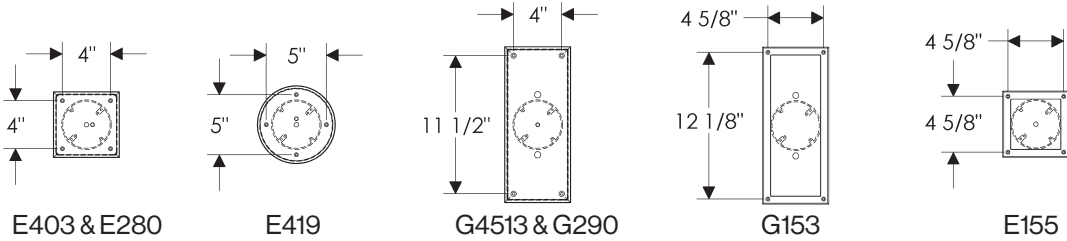
- These fixtures must be mounted or supported independently of an outlet box.
- Glass is individually hand formed for every fixture, thus no two pieces will look exactly alike.

Light Emitting Diodes (LED) Lighting Information

- Fixtures with LED options carry an up charge
- Dimmable
- Low Voltage
- Green—no lead no mercury
- 50,000 hours of lamp life
- Instant on/off performance
- Energy savings up to 80%
- Meets California's Title 24 lighting requirements

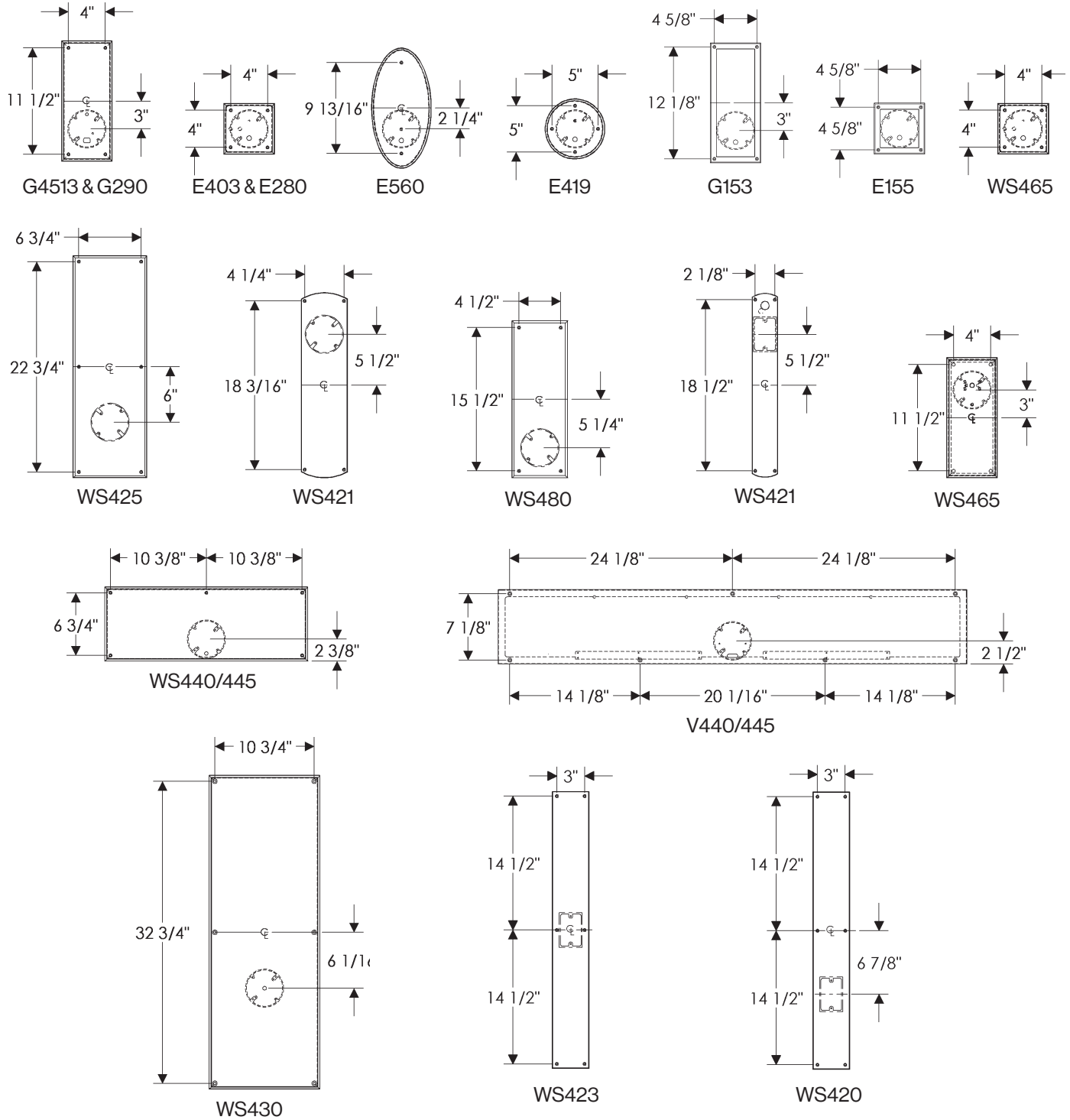
- It is the responsibility of the contractor and homeowner to confirm that the light fixture is properly installed.
- All fixtures are to be installed by a qualified electrician.
- All fixtures must be mounted or supported independently of an outlet box.

INCANDESCENT: CHANDELIER AND PENDANT ELECTRICAL BOX LOCATION:



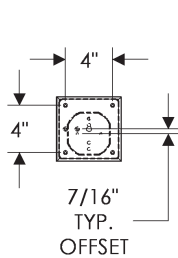
- It is the responsibility of the contractor and homeowner to confirm that the light fixture is properly installed.
- All fixtures are to be installed by a qualified electrician.
- All fixtures must be mounted or supported independently of an outlet box.
- WS421 requires a single gang electrical box.

INCANDESCENT: WALL SCONCE AND VANITY ELECTRICAL BOX LOCATION:

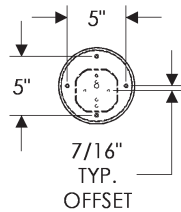


- It is the responsibility of the contractor and homeowner to confirm that the light fixture is properly installed.
- All fixtures are to be installed by a qualified electrician.
- All fixtures must be mounted or supported independently of an outlet box.

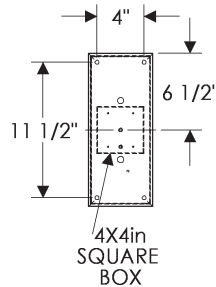
LED: CHANDELIER AND PENDANT ELECTRICAL BOX LOCATION:



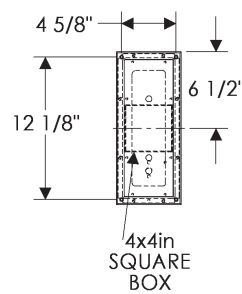
E403 & E280



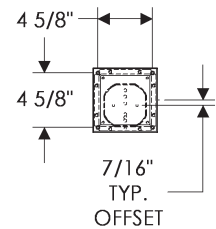
E419



G4513, G290,
E280



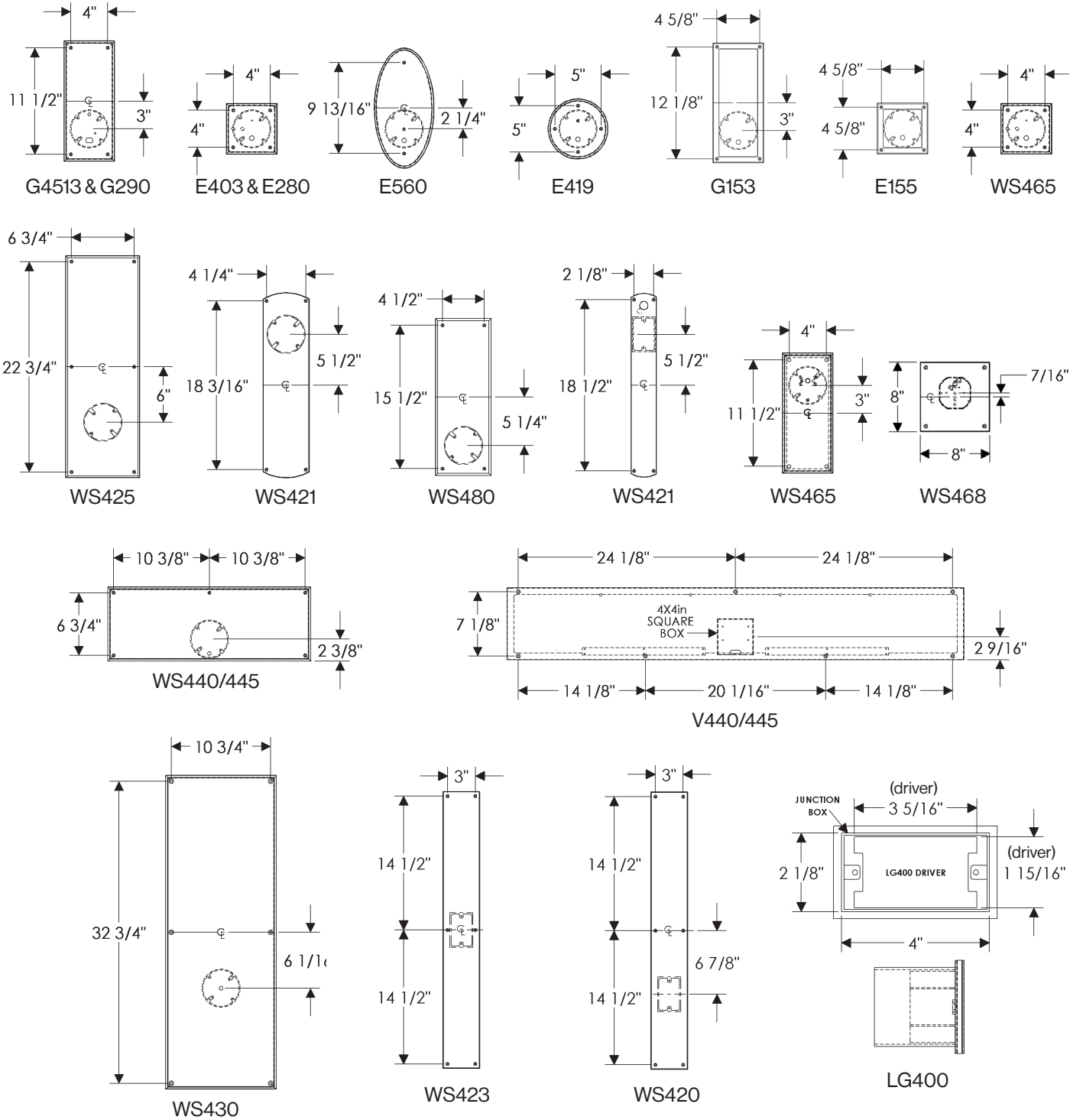
G153



E155

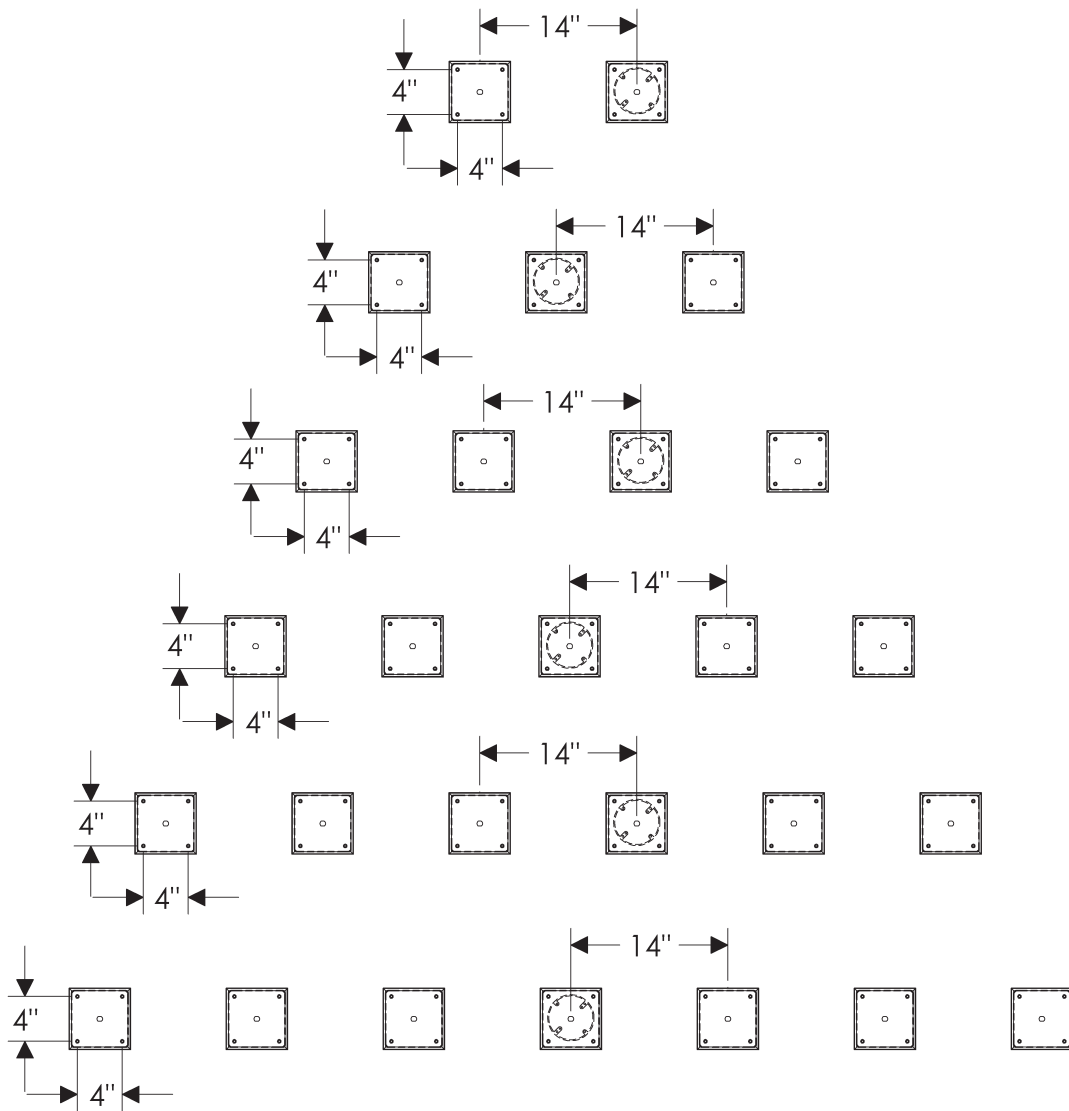
- It is the responsibility of the contractor and homeowner to confirm that the light fixture is properly installed.
- All fixtures are to be installed by a qualified electrician.
- All fixtures must be mounted or supported independently of an outlet box.
- WS421 and WS423 require a single gang extra deep volume electrical box.

LED: WALL SCONCE AND VANITY ELECTRICAL BOX LOCATION:



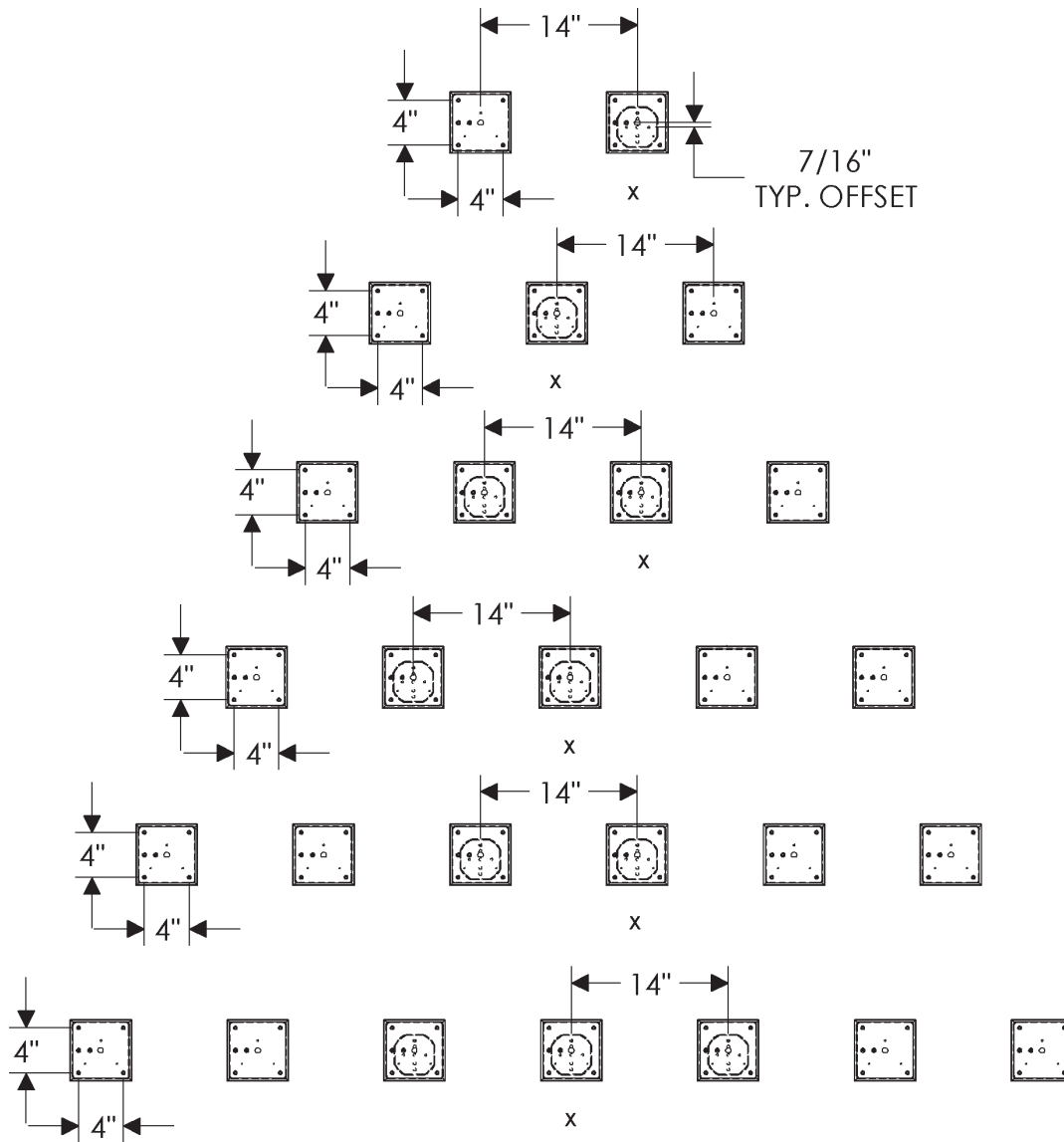
- It is the responsibility of the contractor and homeowner to confirm that the light fixture is properly installed.
- All fixtures are to be installed by a qualified electrician.
- All fixtures must be mounted or supported independently of an outlet box.

INCANDESCENT: VANITY ELECTRICAL BOX LOCATION: E403 & E280



- It is the responsibility of the contractor and homeowner to confirm that the light fixture is properly installed.
- All fixtures are to be installed by a qualified electrician.
- All fixtures must be mounted or supported independently of an outlet box.

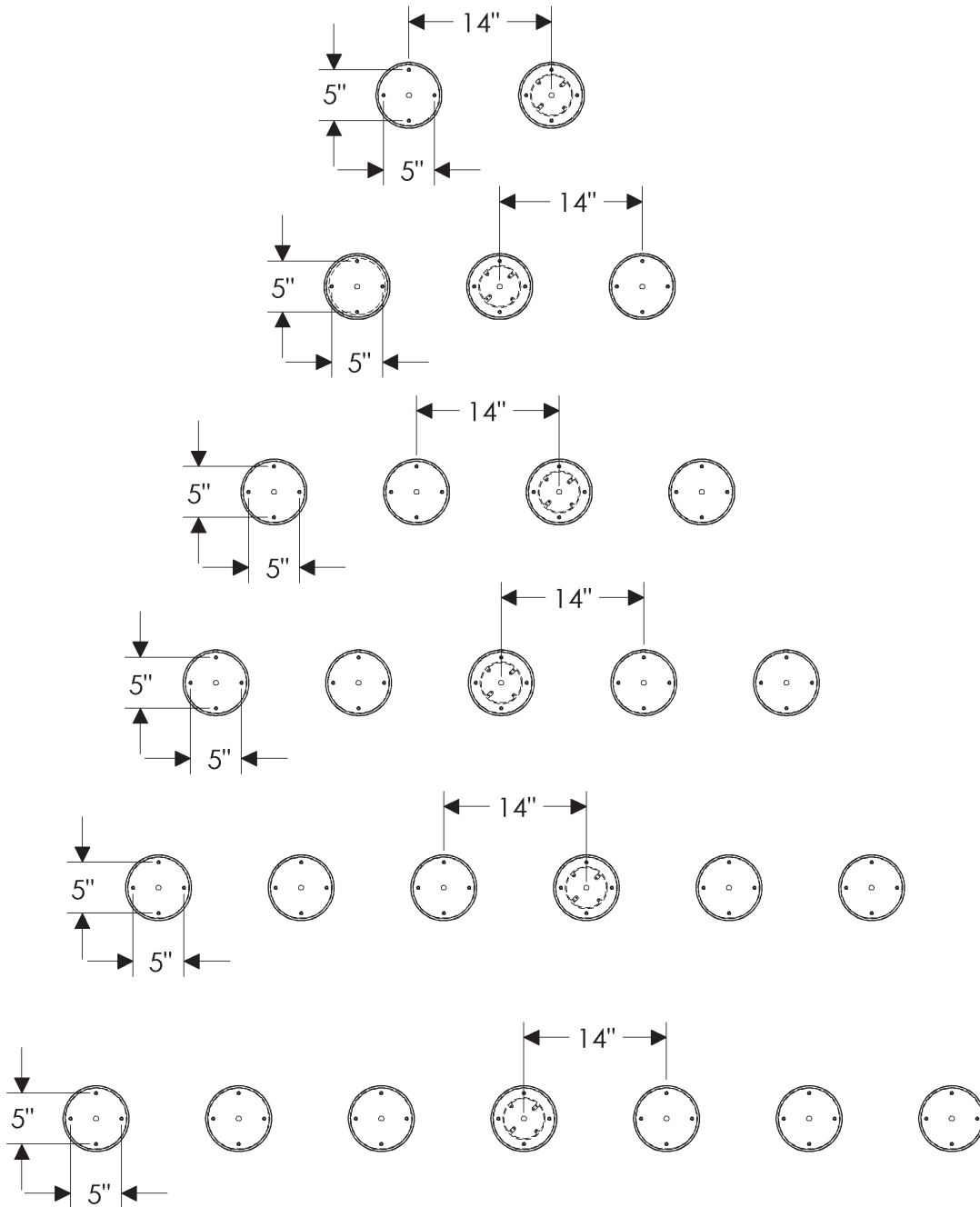
LED: VANITY ELECTRICAL BOX LOCATION: E403 & E280



x denotes electrical box location
inwall—other boxes show
location of LED housing.

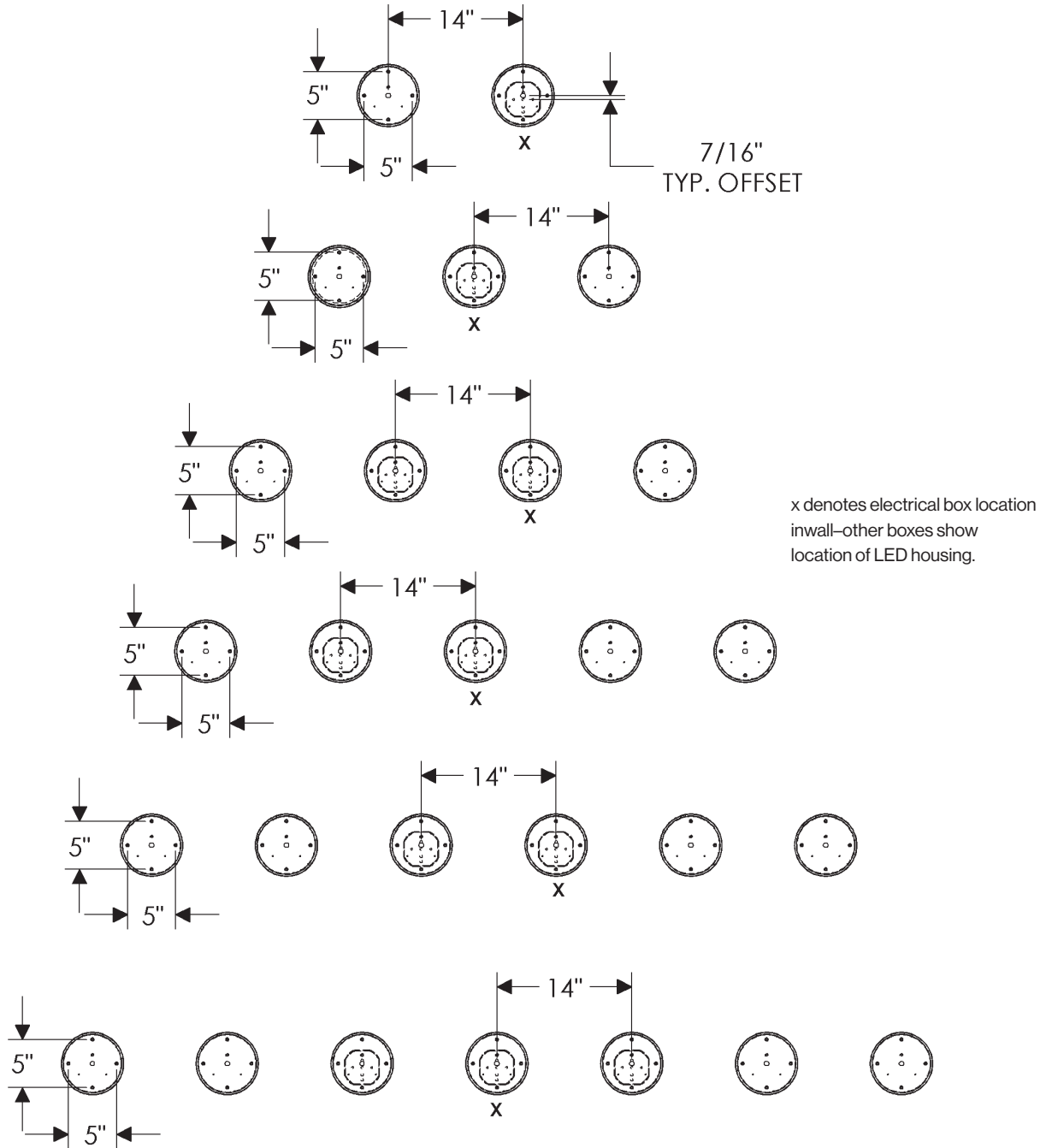
- It is the responsibility of the contractor and homeowner to confirm that the light fixture is properly installed.
- All fixtures are to be installed by a qualified electrician.
- All fixtures must be mounted or supported independently of an outlet box.

INCANDESCENT: VANITY ELECTRICAL BOX LOCATION: E419



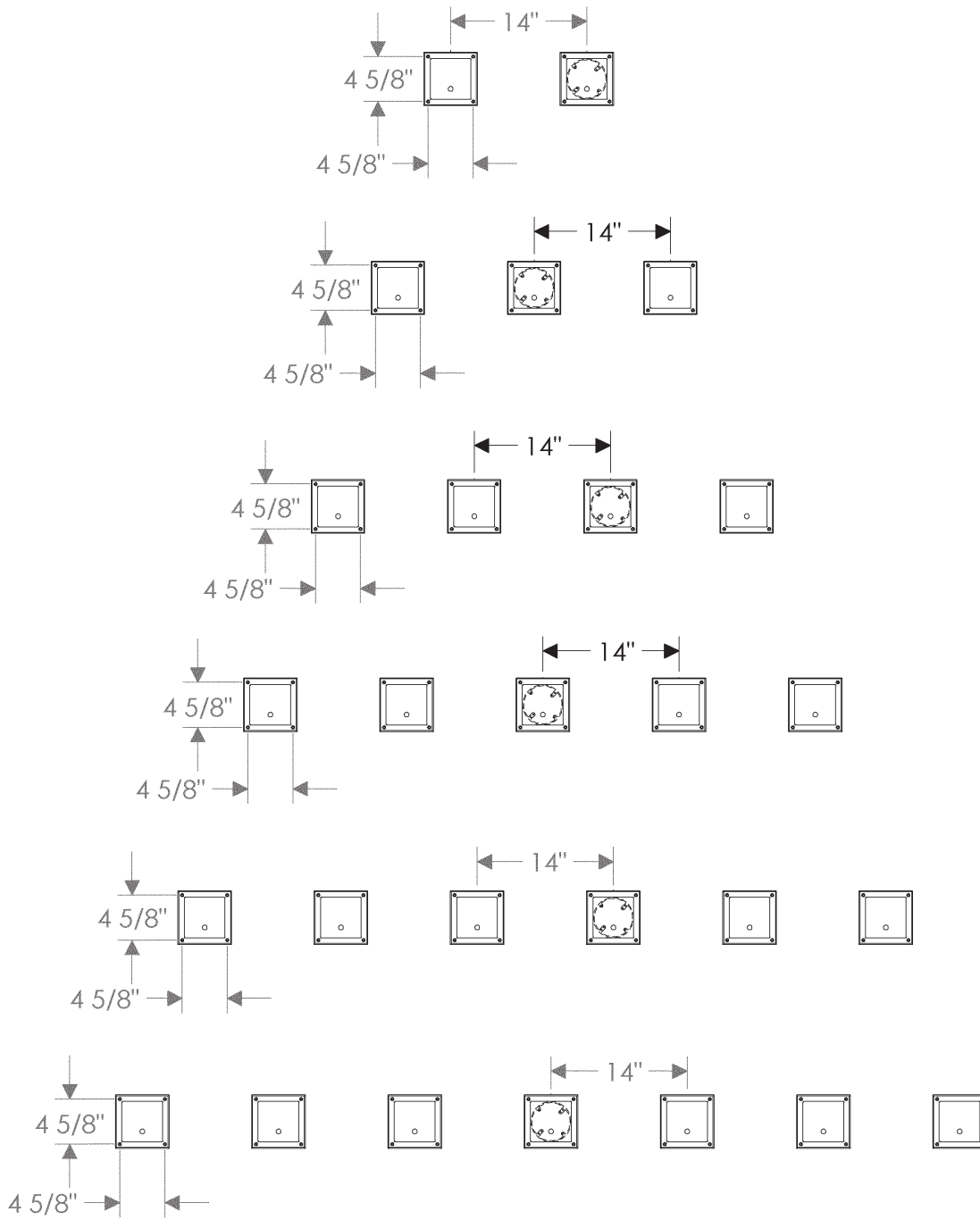
- It is the responsibility of the contractor and homeowner to confirm that the light fixture is properly installed.
- All fixtures are to be installed by a qualified electrician.
- All fixtures must be mounted or supported independently of an outlet box.

LED: VANITY ELECTRICAL BOX LOCATION: E419



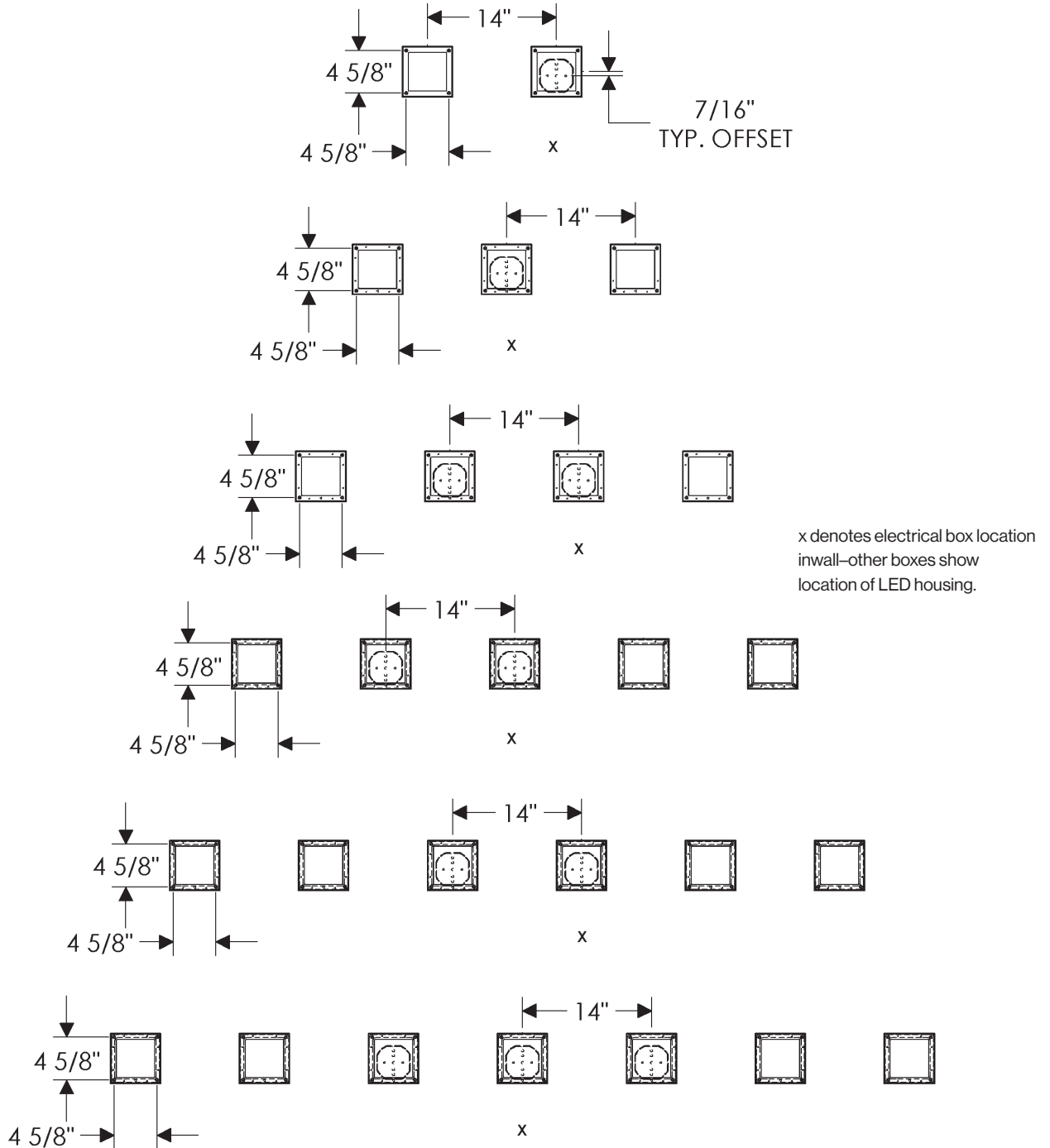
- It is the responsibility of the contractor and homeowner to confirm that the light fixture is properly installed.
- All fixtures are to be installed by a qualified electrician.
- All fixtures must be mounted or supported independently of an outlet box.

INCANDESCENT: VANITY ELECTRICAL BOX LOCATION: E155

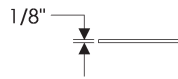
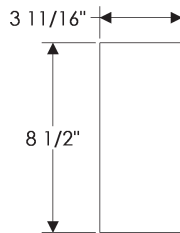


- It is the responsibility of the contractor and homeowner to confirm that the light fixture is properly installed.
- All fixtures are to be installed by a qualified electrician.
- All fixtures must be mounted or supported independently of an outlet box.

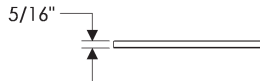
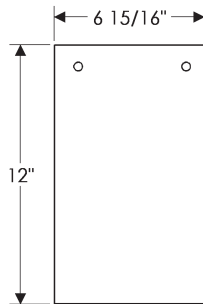
LED: VANITY ELECTRICAL BOX LOCATION: E155



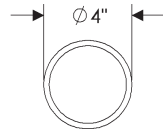
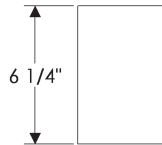
- All shades are hand-blown and hand-crafted glass. The size and surface finish may vary.
- All fixtures are provided with shades. These shades are listed for replacement only.



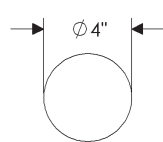
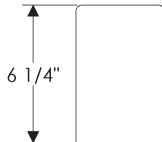
Mod Glass
3 11/16" x 8 1/2" x 1/8"..... \$ 28 net



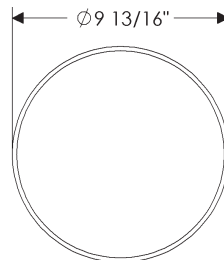
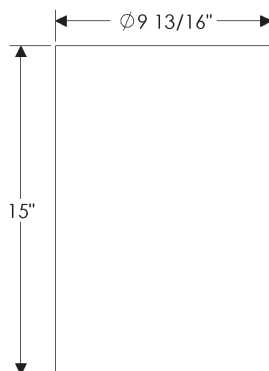
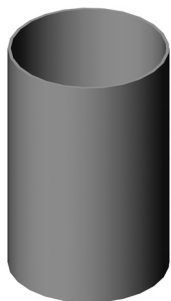
Shade 10
6 15/16" x 12" x 5/16"..... \$ 75 net



Globe 001
4" x 6 1/4"..... \$ 105 net

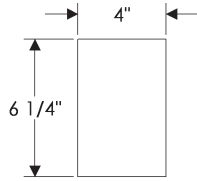
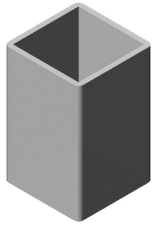


Globe 001-W
4" x 6 1/4"..... \$ 105 net

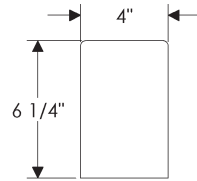
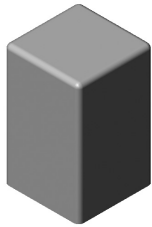


Globe 010
9 13/16" x 15"..... \$ 600 net

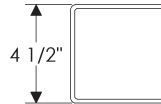
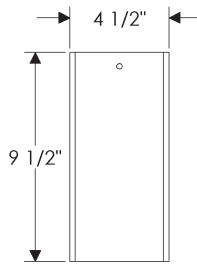
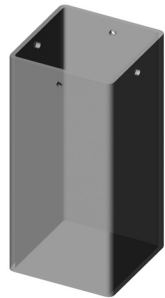
- All shades are hand-blown and hand-crafted glass. The size and surface finish may vary.
- All fixtures are provided with shades. These shades are listed for replacement only.



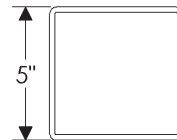
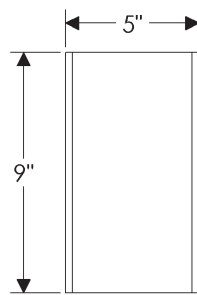
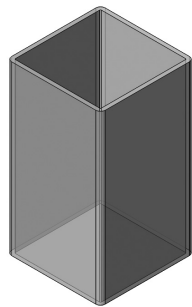
Globe 004
4" x 4" x 6 1/4" \$ 105 net



Globe 004-W
4" x 4" x 6 1/4" \$ 105 net

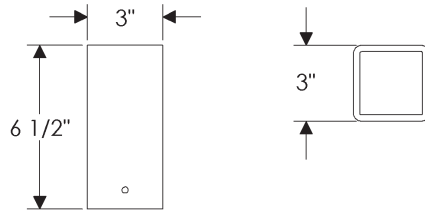
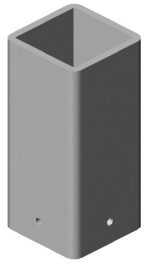


Globe 002
4 1/2" x 9 1/2" x 4 1/2" \$ 240 net

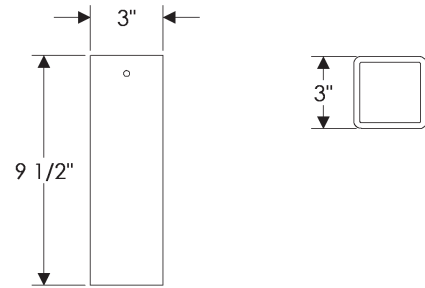


Globe 005
5" x 9" x 5" \$ 294 net

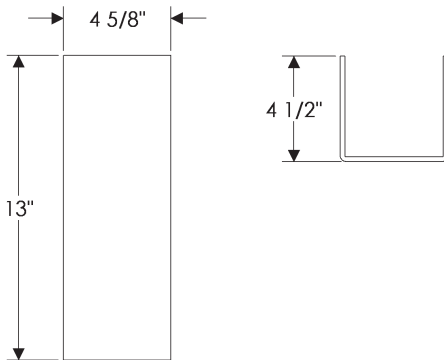
- All shades are hand-blown and hand-crafted glass. The size and surface finish may vary.
- All fixtures are provided with shades. These shades are listed for replacement only.



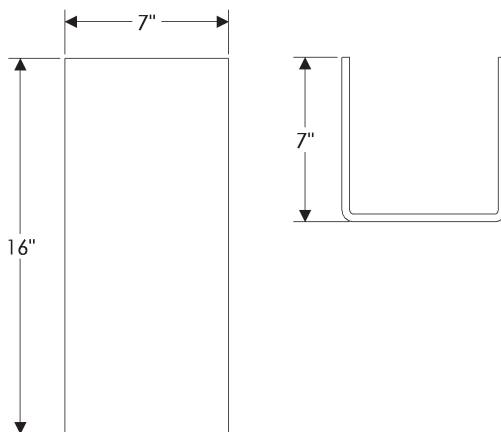
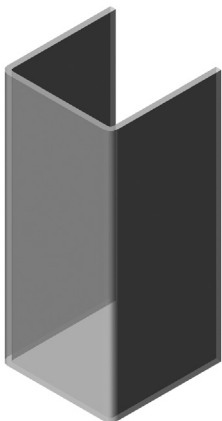
S Tube 001
3" x 3" x 6 1/2" \$ 105 net



S Tube 003
3" x 3" x 9 1/2" \$ 105 net

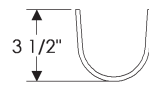
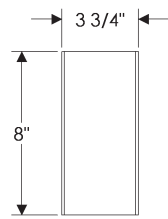


Shade 425
4 5/8" x 13" x 4 1/2" \$ 201 net

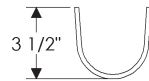
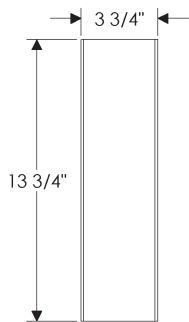


Square Slump 7
7" x 16" x 7" \$ 227 net

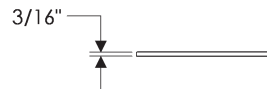
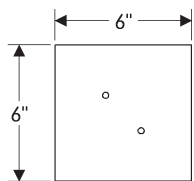
- All shades are hand-blown and hand-crafted glass. The size and surface finish may vary.
- All fixtures are provided with shades. These shades are listed for replacement only.



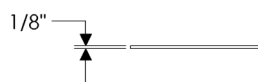
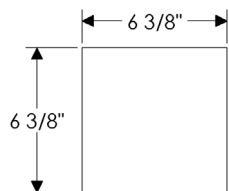
Curve Slump 3.5
3 3/4" x 8" x 3 1/2" \$102 net



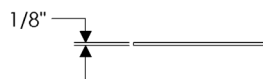
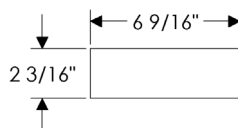
Curve Slump 4
3 3/4" x 13 3/4" x 3 1/2" \$156 net



Shade 6
6" x 6" x 3/16" \$61 net

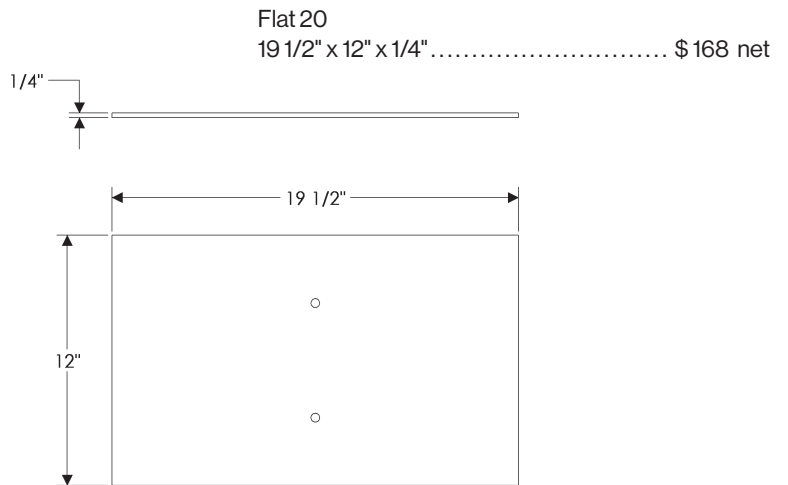
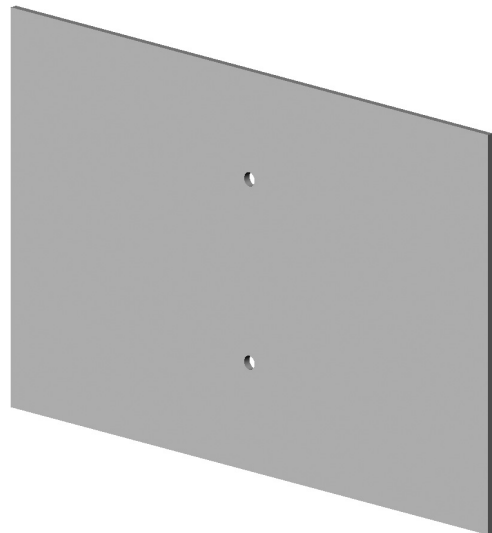
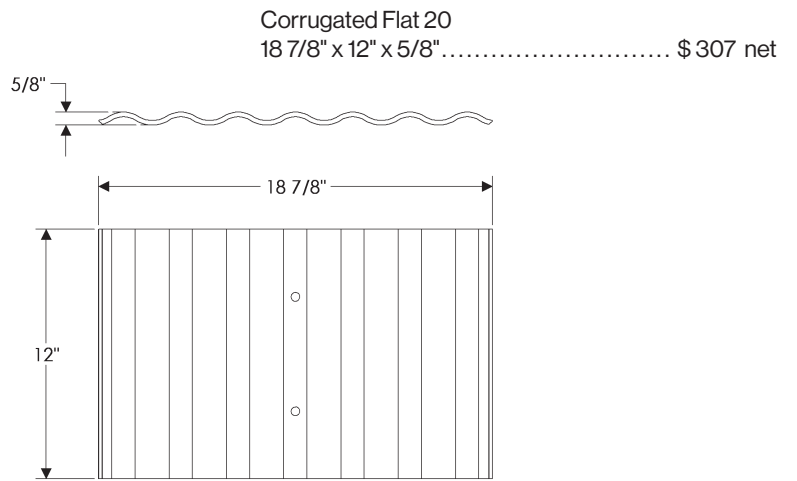
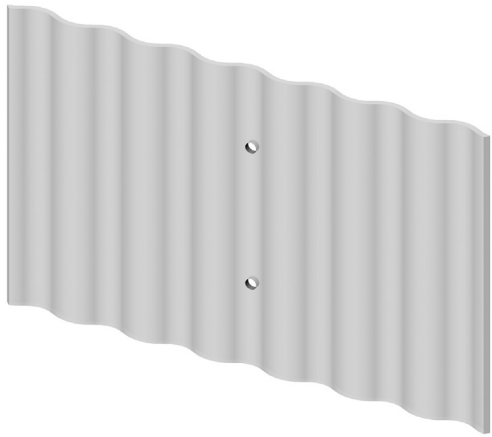


Flat 30
6 3/8" x 6 3/8" x 1/8" \$20 net

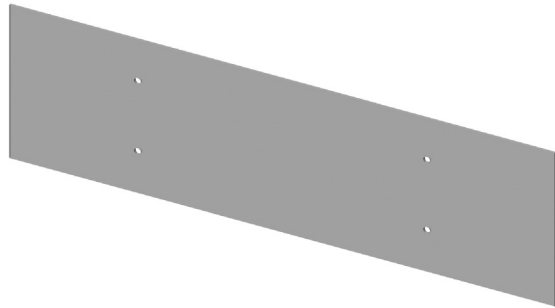


Flat 35
6 9/16" x 2 3/16" x 1/8" \$10 net

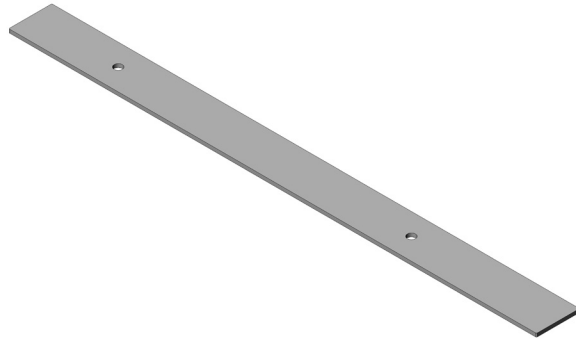
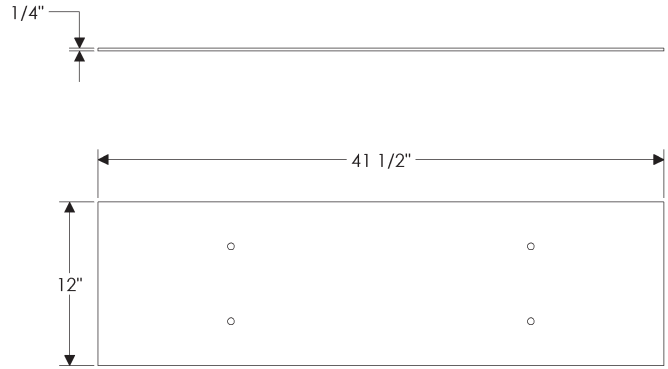
- All shades are hand-blown and hand-crafted glass. The size and surface finish may vary.
- All fixtures are provided with shades. These shades are listed for replacement only.
- Shades Flat 20, Flat 40, and Corrugated Flat 20 require professional installation.



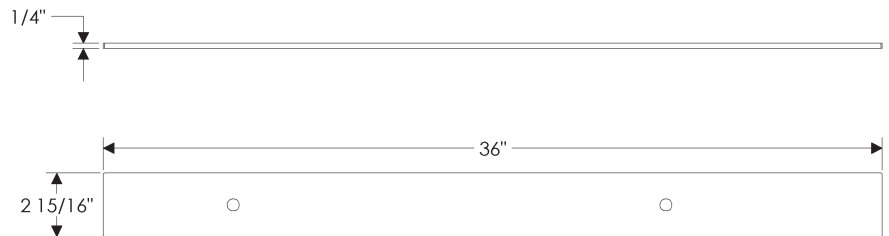
- All shades are hand-blown and hand-crafted glass. The size and surface finish may vary.
- All fixtures are provided with shades. These shades are listed for replacement only.
- Shades Flat 20, Flat 40, and Corrugated Flat 20 require professional installation.



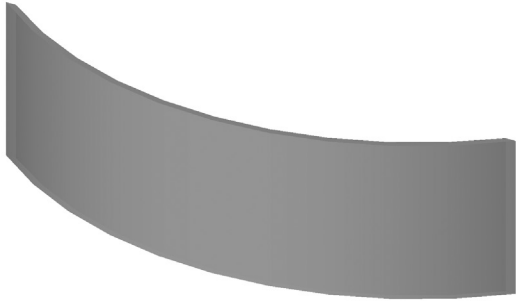
Flat 40
41 1/2" x 12" x 1/4" \$ 373 net



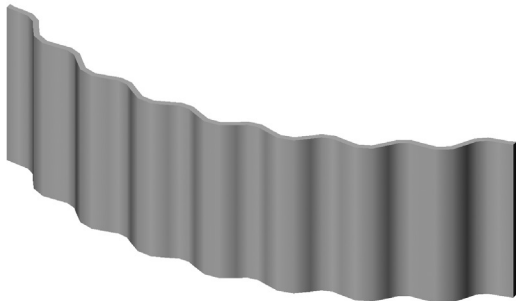
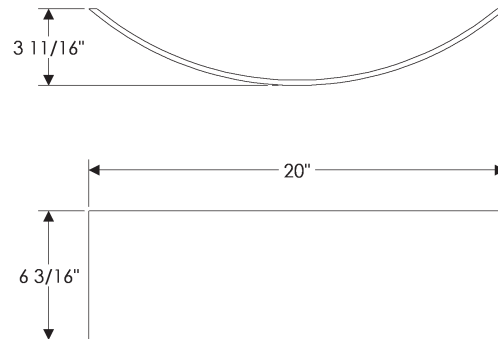
Flat 50
36" x 2 15/16" x 1/4" \$ 102 net



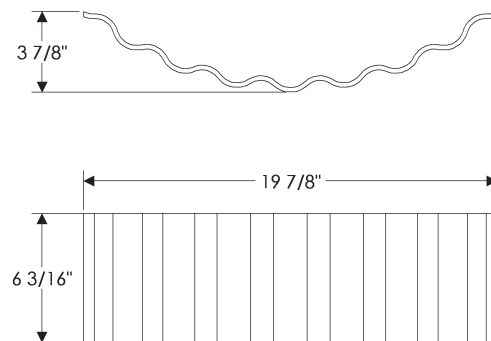
- All shades are hand-blown and hand-crafted glass. The size and surface finish may vary.
- All fixtures are provided with shades. These shades are listed for replacement only.
- Shades Plank 20 and Corrugated Plank 20 require professional installation.



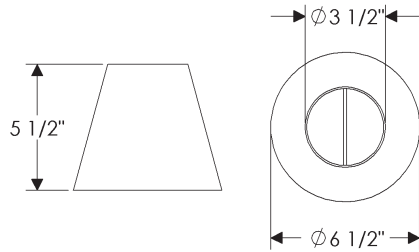
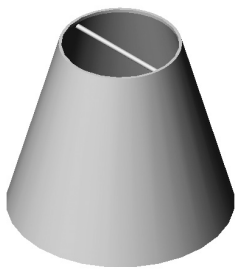
Plank 20
6 3/16" x 20" x 3 11/16" \$ 120 net



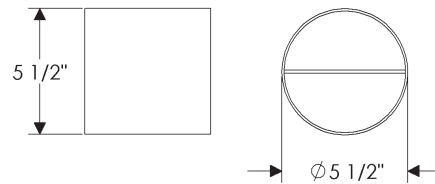
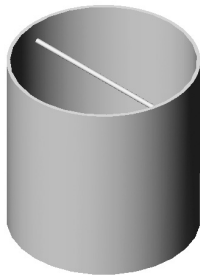
Corrugated Plank 20
6 3/16" x 19 7/8" x 3 7/8" \$ 148 net



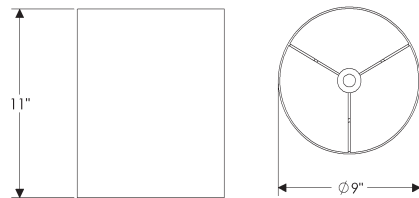
- All linen shades are 100% linen.
- Shades are available in the following colors: White, Flax, Taupe, or Black.
- Shades are available in the following styles: Cone and Drum.
- Linen shades included with appropriate fixtures. These shades are listed for replacement only.



Cone 1
 6 1/2" diameter x 5 1/2" \$ 40 net
 • Available for C500 and WS500



Drum 1
 5 1/2" diameter x 5 1/2" \$ 40 net
 • Available for C500 and WS500

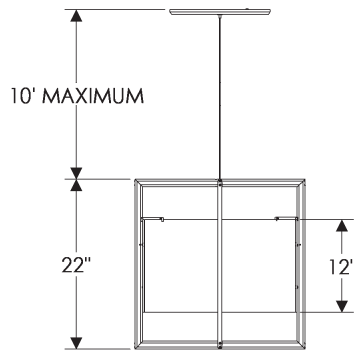
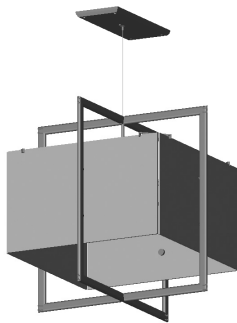


Drum 2
 9" diameter x 11" \$ 76 net
 • Available for PE532

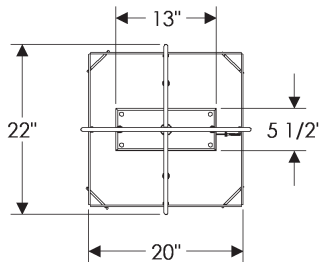
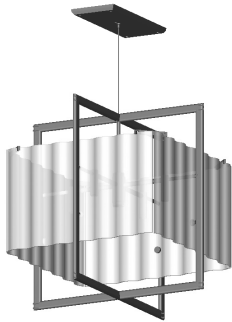
- Specify metal, patina, and escutcheon.
- Light fixtures are shown with G4513 Rectangular escutcheon for illustration purposes only. See pages Tiii -Tiv for available escutcheon options.
- All LED lights are dimmable.
- The standard cable length for Cube chandeliers is 10'. Please specify if additional length is needed. Call RMH for pricing.
- Fixtures are UL rated for indoor and outdoor damp locations. A damp location is a protected area that is subject to moisture; such as under the eave of a roof.
- See page Tv-Tviii for electrical box location.
- Fixtures must be mounted independently of outlet box. Support blocking in ceiling is required.
- See page Ti for leather options. Bronze textures not available. Refer to website or brochure for leather details.

Chandelier

C400FB
(Flat Box)



C400CB
(Corrugated Box)



Cube Chandelier

- 10' Maximum cord length.
- 4 incandescent or compact fluorescent type B bulbs.
- 60 watts maximum ea.
- Bulbs not included.
- Price includes glass shade.
- * Designer escutcheon requires leather choice.



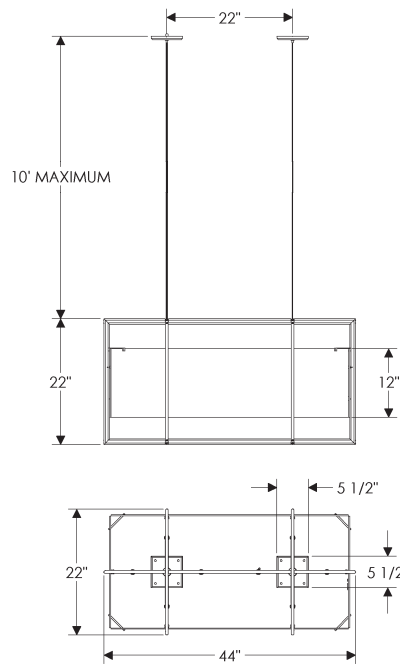
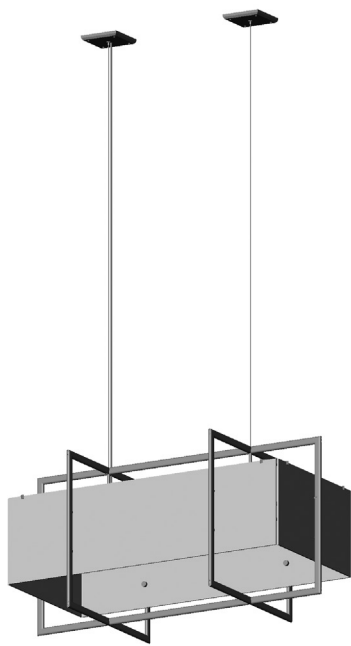
LED Cube Chandelier

- 10' Maximum cord length.
- Price includes LED lamp.
- Price includes glass shade.
- 120VAC, 60Hz
- 13.2 W, 2700K
- * Designer escutcheon requires leather choice.

Chandelier	Overall Width	Overall Depth	Overall Height	Shade Type	Wt. lbs.	Standard Escutcheon	Designer Escutcheon* (G153)
C400FB	22"	22"	22"	Flat 20	44.00	\$ 10,483	\$ 10,923
C400FB-LED	22"	22"	22"	Flat 20	44.00	\$ 10,849	\$ 11,289
C400CB	22"	22"	22"	Corrugated	44.00	\$ 10,483	\$ 10,923
C400CB-LED	22"	22"	22"	Corrugated	44.00	\$ 10,849	\$ 11,289

- Specify metal, patina, and escutcheon.
- Light fixtures are shown with E403 Square escutcheon for illustration purposes only. See pages Tiii -Tiv for available escutcheon options.
- All LED lights are dimmable.
- The standard length for Cube chandeliers is 10'. Please specify if additional length is needed. Call RMH for pricing.
- Fixtures are UL rated for indoor and outdoor damp locations. A damp location is a protected area that is subject to moisture; such as under the eave of a roof.
- See page Tv-Tviii for electrical box location.
- Fixtures must be mounted independently of outlet box. Support blocking in ceiling is required.
- See page Ti for leather options. Bronze textures not available. Refer to website or brochure for leather details.

Chandelier



Double Cube Chandelier

- 10' Maximum cord length.
- 8 incandescent or compact fluorescent type B bulbs.
- 60 watts maximum ea.
- Bulbs not included.
- Price includes glass shades.
- * Designer escutcheon requires leather choice.



LED Double Cube Chandelier

- 10' Maximum cord length.
- Price includes LED lamp.
- Price includes glass shades.
- 120VAC, 60Hz
- 26.4 W, 2700K
- * Designer escutcheon requires leather choice.

Chandelier	Overall Width	Overall Depth	Overall Height	Shade Type	Wt. lbs.	Standard Escutcheon	Designer Escutcheon* (E155)
C405FB	44"	22"	22"	Flat 20 & Flat 40	85.00	\$ 17,836	\$ 18,555
C405FB-LED	44"	22"	22"	Flat 20 & Flat 40	85.00	\$ 18,634	\$ 19,354

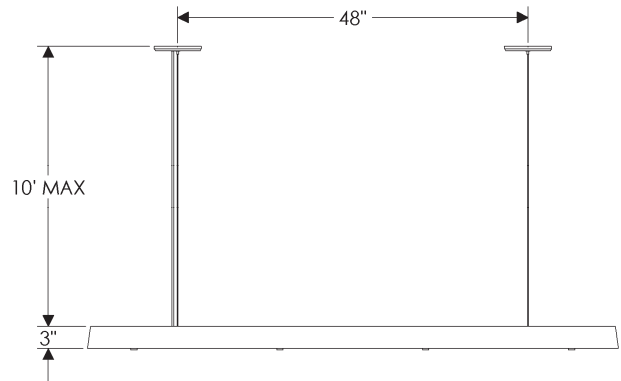
- Specify metal, patina, and escutcheon.
- Light fixtures are shown with E419 Round escutcheon for illustration purposes only. See pages Tiii -Tiv for available escutcheon options.
- All LED lights are dimmable.
- The standard length is 10'. Please specify if additional length is needed. Call RMH for pricing.
- Fixture is not UL rated.
- See page Tv-Tviii for electrical box location.
- Fixtures must be mounted independently of outlet box. Support blocking in ceiling is required.
- See page Ti for leather options. Bronze textures not available. Refer to website or brochure for leather details.

Chandelier



LED Linear Chandelier

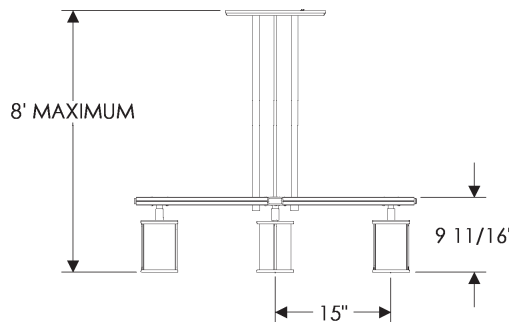
- 10' Maximum cord length.
 - Power supply included but not attached to fixture.
 - Provide remote location for included LED driver, approximately 3.5" x 3.5" x 11" air gap required.
 - LED lamp included.
 - 65 watts.
 - Price includes glass shades.
 - 120VAC, 60Hz
 - 65 W, 2600K
- * Designer escutcheon requires leather choice.



Chandelier	Overall Width	Overall Depth	Overall Height	Shade Type	Wt. lbs.	Standard Escutcheon	Designer Escutcheon* (E155)
C420-LED	72 3/4"	3 3/4"	3"	Flat 50	65.00	\$ 13,305	\$ 14,024

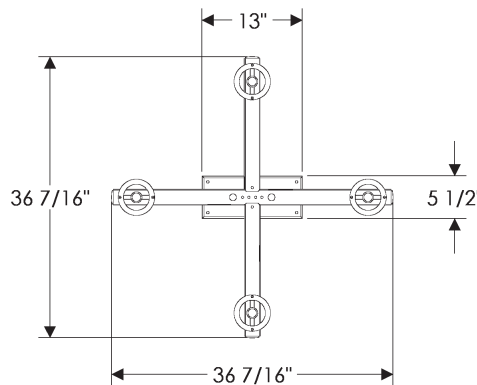
- Specify metal, patina, and escutcheon.
- Light fixtures are shown with G4513 Rectangular escutcheon for illustration purposes only. See pages Tiii -Tiv for available escutcheon options.
- All LED lights are dimmable.
- Specify fixture length. The maximum standard length for Cross Arm Chandelier is 8'. Please specify if additional length is needed. Call RMH for pricing.
- Fixtures are UL rated for indoor and outdoor damp locations. A damp location is a protected area that is subject to moisture; such as under the eave of a roof.
- See page Tv-Tviii for electrical box location.
- Fixtures must be mounted independently of outlet box. Support blocking in ceiling is required.
- See page Ti for leather options. Bronze textures not available. Refer to website or brochure for leather details.

Chandelier



Cross Arm Chandelier

- 8' maximum length.
- 4 incandescent or compact fluorescent type A bulbs.
- 100 watts maximum ea.
- Bulbs not included.
- Price includes glass shade.
- * Designer escutcheon requires leather choice.



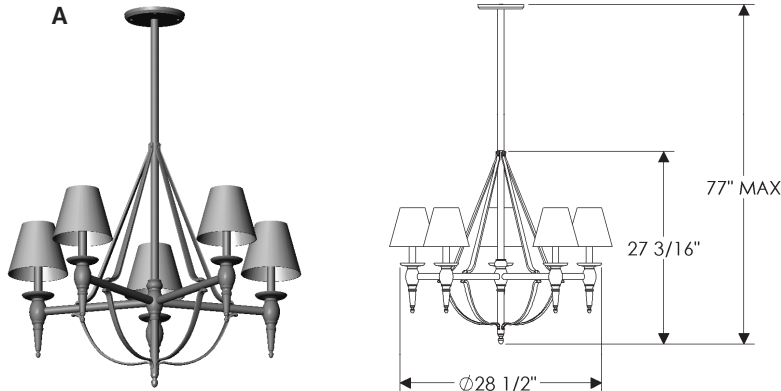
LED Cross Arm Chandelier

- 8' maximum length.
- Price includes LED lamp.
- Price includes glass shade.
- 120VAC, 60Hz
- 13.2 W, 2700K
- * Designer escutcheon requires leather choice.

Chandelier	Overall Width	Overall Depth	Overall Height	Shade Type	Wt. lbs.	Standard Escutcheon	Designer Escutcheon* (G153)
C450	36 7/16"	36 7/16"	9 11/16"	Globe 001	50.00	\$ 9,278	\$ 9,718
C450-LED	36 7/16"	36 7/16"	9 11/16"	Globe 001	50.00	\$ 9,644	\$ 10,084
C455	36 7/16"	36 7/16"	9 11/16"	Globe 004	50.00	\$ 9,278	\$ 9,718
C455-LED	36 7/16"	36 7/16"	9 11/16"	Globe 004	50.00	\$ 9,644	\$ 10,084

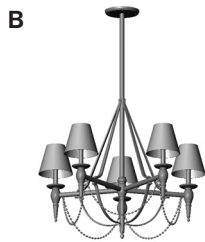
- Specify metal and patina.
- Light fixtures shown with E419 Round escutcheon for illustration purposes only. See pages Tiii -Tiv for available escutcheon options.
- Specify fixture lengths. The maximum standard length for the 5–Arm Chandelier is 77".
Please specify if additional length is needed. Call RMH for pricing.
- Fixtures are UL rated for indoor and outdoor damp locations. A damp location is a protected area that is subject to moisture; such as under the eave of a roof.
- See page Tv-Tviii for electrical box location.
- Fixtures must be mounted independently of outlet box. Support blocking in ceiling is required.

Chandelier

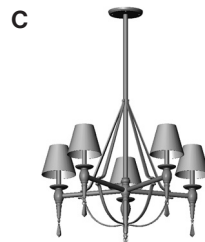


Towne 5–Arm Chandelier

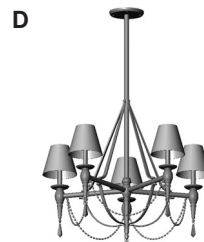
- Price includes fabric shade.
- 5 incandescent or compact fluorescent type B bulbs.
- 60 watts maximum ea.
- Bulbs not included.
- Price includes fabric shade.



with crystals only



with prisms only

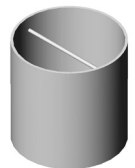


with crystals & prisms

SHADE OPTIONS



Cone 1

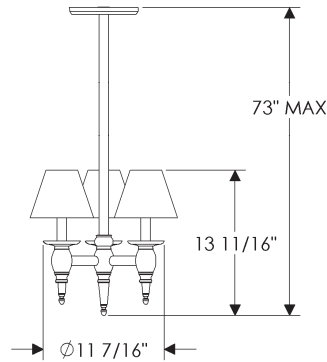


Drum 1

C500	Overall Width	Overall Depth	Overall Height	Shade Type	Wt. lbs.	Standard Escutcheon
Option A	28 1/2"	28 1/2"	27 3/16"	Cone 1 or Drum 1	46.00	\$ 12,785
Option B	28 1/2"	28 1/2"	27 3/16"	Cone 1 or Drum 1	46.00	\$ 13,477
Option C	28 1/2"	28 1/2"	27 3/16"	Cone 1 or Drum 1	46.00	\$ 13,570
Option D	28 1/2"	28 1/2"	27 3/16"	Cone 1 or Drum 1	46.00	\$ 14,262

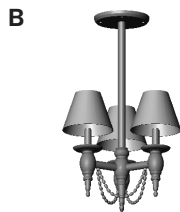
- Specify metal and patina.
- Light fixtures shown with E419 Round escutcheon for illustration purposes only. See pages Tiii -Tiv for available escutcheon options.
- Specify fixture lengths. The maximum standard length for the 3–Arm Chandelier is 73".
Please specify if additional length is needed. Call RMH for pricing.
- Fixtures are UL rated for indoor and outdoor damp locations. A damp location is a protected area that is subject to moisture; such as under the eave of a roof.
- See page Tv-Tviii for electrical box location.
- Fixtures must be mounted independently of outlet box. Support blocking in ceiling is required.

Chandelier



Towne 3–Arm Chandelier

- 3 incandescent or compact fluorescent type B bulbs.
- 60 watts maximum ea.
- Bulbs not included.
- Price includes fabric shade.



with crystals only

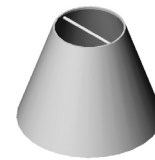


with prisms only

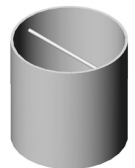


with crystals & prisms

SHADE OPTIONS



Cone 1

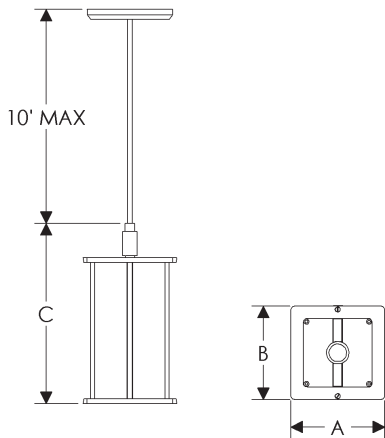


Drum 1

C525	Overall Width	Overall Depth	Overall Height	Shade Type	Wt. lbs.	Standard Escutcheon
Option A	11 7/16"	11 7/16"	13 11/16"	Cone 1 or Drum 1	33.00	\$ 6,313
Option B	11 7/16"	11 7/16"	13 11/16"	Cone 1 or Drum 1	33.00	\$ 6,746
Option C	11 7/16"	11 7/16"	13 11/16"	Cone 1 or Drum 1	33.00	\$ 6,784
Option D	11 7/16"	11 7/16"	13 11/16"	Cone 1 or Drum 1	33.00	\$ 7,218

- Specify metal, patina, and escutcheon.
- Light fixtures are shown with E403 Square escutcheon for illustration purposes only. See pages Tiii -Tiv for available escutcheon options.
- All LED lights are dimmable.
- The standard cable length for pendants is 10'. Please specify if additional length is needed. Call RMH for pricing.
- Fixtures are UL rated for indoor and outdoor damp locations. A damp location is a protected area that is subject to moisture; such as under the eave of a roof.
- See page Tv-Tviii for electrical box location.
- Fixtures must be mounted independently of outlet box. Support blocking in ceiling is required.
- See page Ti for leather options. Bronze textures not available. Refer to website or brochure for leather details.

Pendants



Pendant

- 10' Maximum cord length.
- incandescent type bulb.
- 100 watts maximum.
- Bulb not included.
- Price includes glass shade when applicable.
- E155 Square Designer Escutcheon requires leather choice.

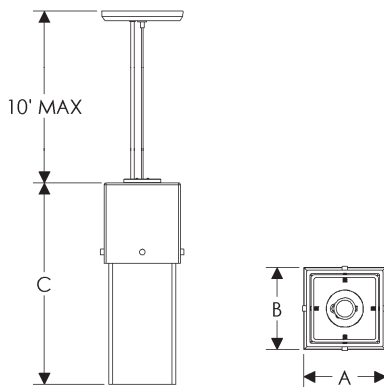
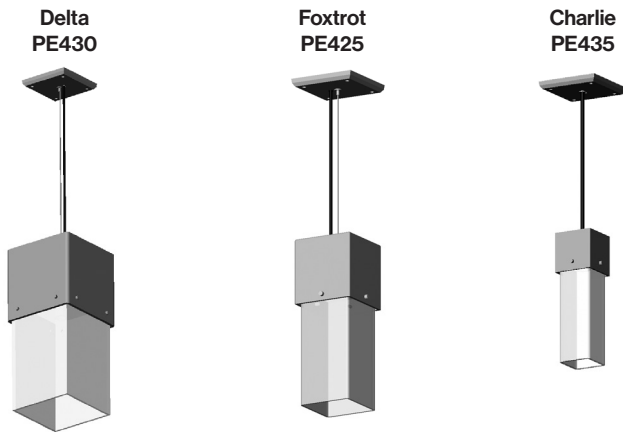
LED Pendant

- 10' Maximum cord length.
- Price includes LED lamp.
- Price includes glass shade.
- 120VAC, 60Hz
- 3.3 W, 2700K
- E155 Square Designer Escutcheon requires leather choice.

Pendant	A Width	B Depth	C Height	Shade Type	Bulb Type	Wt. lbs.	Price	LED Price
PE455	5"	5"	8 11/16"	Globe 004	A	3.50	\$ 1,982	\$ 2,182
PE455 w/E155	5"	5"	8 11/16"	Globe 004	A	3.50	\$ 2,341	\$ 2,541
PE450	4 3/4"	4 3/4"	8 11/16"	Globe 001	A	3.50	\$ 1,982	\$ 2,182
PE450 w/E155	4 3/4"	4 3/4"	8 11/16"	Globe 001	A	3.50	\$ 2,341	\$ 2,541
PE465	6"	6"	11 1/2"	Globe 005	A	7.00	\$ 3,747	\$ 3,947
PE465 w/E155	6"	6"	11 1/2"	Globe 005	A	7.00	\$ 4,107	\$ 4,307

- Specify metal, patina, and escutcheon.
- Light fixtures are shown with E403 Square escutcheon for illustration purposes only. See pages Tiii -Tiv for available escutcheon options.
- All LED lights are dimmable.
- The standard cable length for pendants is 10'. Please specify if additional length is needed. Call RMH for pricing.
- Fixtures are UL rated for indoor and outdoor damp locations. A damp location is a protected area that is subject to moisture; such as under the eave of a roof.
- See page Tv-Tviii for electrical box location.
- Fixtures must be mounted independently of outlet box. Support blocking in ceiling is required.
- See page Ti for leather options. Bronze textures not available. Refer to website or brochure for leather details.

Pendants



Pendant

- 10' Maximum cord length.
- incandescent type bulb.
- 100 watts maximum.
- Bulb not included.
- Price includes glass shade when applicable.
- E155 Square Designer Escutcheon requires leather choice.

LED Pendant

- 10' Maximum cord length.
- Price includes LED lamp.
- Price includes glass shade.
- 120VAC, 60Hz
- 3.3 W, 2700K
- E155 Square Designer Escutcheon requires leather choice.

Pendant	A Width	B Depth	C Height	Shade Type	Bulb Type	Wt. lbs.	Price	LED Price
PE430	8"	8"	18"	Shade 10	A	40.00	\$ 4,859	\$ 5,059
PE430 w/E155	8"	8"	18"	Shade 10	A	40.00	\$ 5,219	\$ 5,419
PE425	5 1/8"	5 1/8"	13 1/4"	Globe 002	A	15.00	\$ 2,719	\$ 2,919
PE425 w/E155	5 1/8"	5 1/8"	13 1/4"	Globe 002	A	15.00	\$ 3,078	\$ 3,278
PE435	3 1/2"	3 1/2"	11 1/2"	S Tube 003	A or T	5.00	\$ 1,931	\$ 2,131
PE435 w/E155	3 1/2"	3 1/2"	11 1/2"	S Tube 003	A or T	5.00	\$ 2,291	\$ 2,491

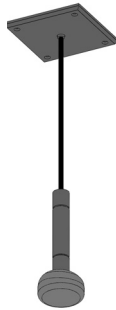
- Specify metal, patina, and escutcheon.
- Light fixtures are shown with E403 Square escutcheon for illustration purposes only. See pages Tiii -Tiv for available escutcheon options.
- The standard cable length for pendants is 10'. Please specify if additional length is needed. Call RMH for pricing.
- Fixtures are UL rated for indoor and outdoor damp locations. A damp location is a protected area that is subject to moisture; such as under the eave of a roof.
- See page Tv-Tviii for electrical box location.
- Fixtures must be mounted independently of outlet box. Support blocking in ceiling is required.
- See page Ti for leather options. Bronze textures not available. Refer to website or brochure for leather details.

Pendants

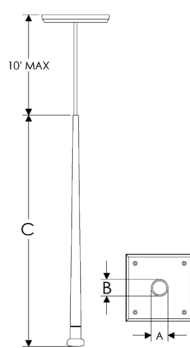
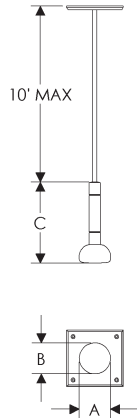
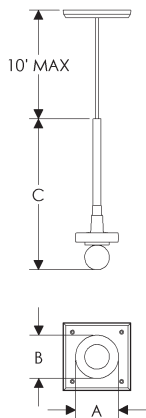
**Luna
PE490**



**Torch
PE625-LED**



**Icicle
PE627**



Pendant

- incandescent type bulb.
- 100 watts maximum.
- Bulb not included.
- Price includes glass shade when applicable.
- E155 Square Designer Escutcheon requires leather choice.

LED Pendant

- Price includes LED lamp.
- Price includes glass shade.
- 120VAC, 60Hz
- 4 W, 3000K
- E155 Square Designer Escutcheon requires leather choice.
- PE625-LED And PE627 are not dimmable.

Pendant	A Width	B Depth	C Height	Shade Type	Bulb Type	Wt. lbs.	Price	LED Price
PE490	3 1/2"	3 1/2"	12"	-	B	4.50	\$ 1,622	N/A
PE490 w/E155	3 1/2"	3 1/2"	12"	-	B	4.50	\$ 1,982	N/A
PE625	2 1/2"	2 1/2"	6 9/16"	-	N/A	3.50	N/A	\$ 1,513
PE625 w/E155	2 1/2"	2 1/2"	6 9/16"	-	N/A	3.50	N/A	\$ 1,873
PE627	13/8"	13/8"	18 7/8"	-	N/A	2.00	N/A	\$ 1,617
PE627 w/E155	13/8"	13/8"	18 7/8"	-	N/A	2.00	N/A	\$ 1,977

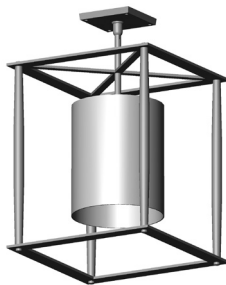
- Specify metal, patina, and escutcheon.
- Light fixtures are shown with E419 Round and E280 Metro escutcheons for illustration purposes only. See pages Tiii -Tiv for available escutcheon options.
- All LED lights are dimmable.
- Fixtures are UL rated for indoor and outdoor damp locations. A damp location is a protected area that is subject to moisture; such as under the eave of a roof.
- See page Tv-Tviii for electrical box location.
- Fixtures must be mounted independently of outlet box. Support blocking in ceiling is required.
- See page Ti for leather options. Bronze textures not available. Refer to website or brochure for leather details.

Pendants

**Cargo
PE530**



**Madison
PE532**

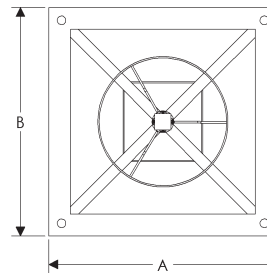
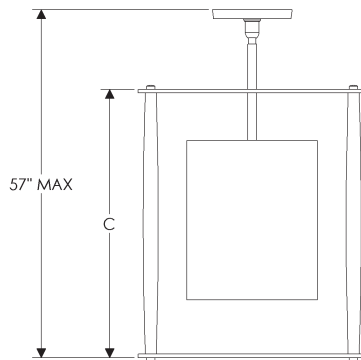
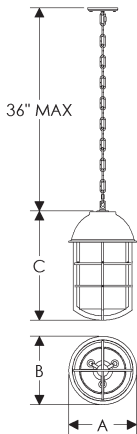


Pendant

- incandescent type bulb.
- 100 watts maximum.
- Bulb not included.
- Price includes glass shade when applicable.

LED Pendant

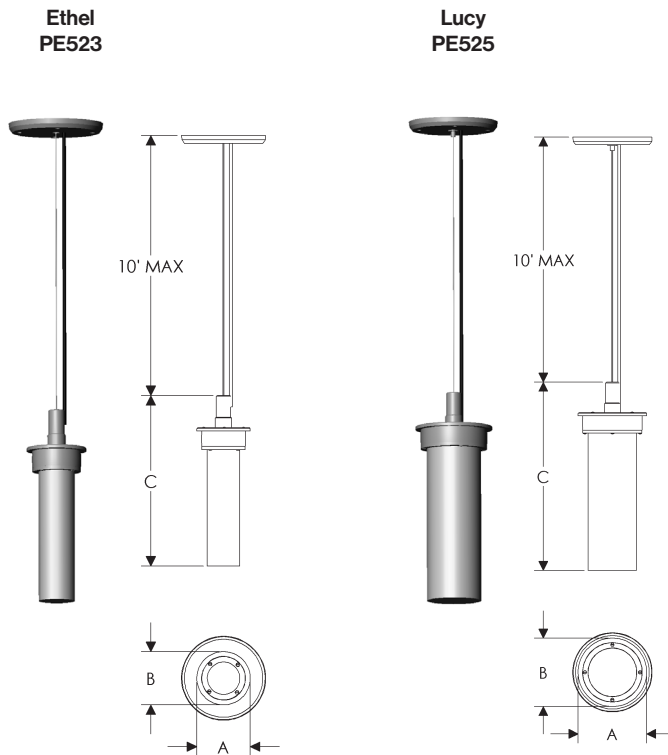
- Price includes LED lamp.
- Price includes fabric shade.
- 120VAC, 60Hz
- 13.2 W, 2700K
- E155 Square Designer Escutcheon requires leather choice.



Pendant	A Width	B Depth	C Height	Shade Type	Bulb Type	Wt. lbs.	Price	LED Price
PE530	14 1/2"	14 1/2"	23 1/2"	Globe 010	A	85.00	\$ 18,266	N/A
PE532	15 3/4"	15 3/4"	18 1/2"	Drum 2	N/A	38.00	N/A	\$ 11,612
PE532 w/E155	15 3/4"	15 3/4"	18 1/2"	Drum 2	N/A	38.00	N/A	\$ 11,972

- Specify metal, patina, and escutcheon.
- Light fixtures are shown with E419 Round escutcheons for illustration purposes only. See pages Tiii -Tiv for available escutcheon options.
- All LED lights are dimmable.
- Fixtures are UL rated for indoor and outdoor damp locations. A damp location is a protected area that is subject to moisture; such as under the eave of a roof.
- See page Tv-Tviii for electrical box location.
- Fixtures must be mounted independently of outlet box. Support blocking in ceiling is required.
- See page Ti for leather options. Bronze textures not available. Refer to website or brochure for leather details.

Pendants



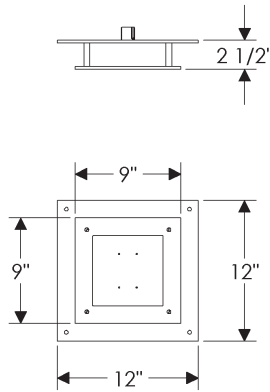
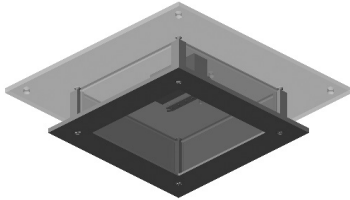
LED Pendant

- Price includes LED lamp.
- Price includes fabric shade.
- 120VAC, 60Hz
- 13.2 W, 2700K
- E155 Square Designer Escutcheon requires leather choice.

Pendant	A Width	B Depth	C Height	Shade Type	Wt. lbs.	LED Price
PE525	5 5/8"	5 5/8"	16 3/16"	GLOBE 006	20.5	\$ 5,995
PE525 W/E155	5 5/8"	5 5/8"	16 3/16"	GLOBE 006	20.5	\$ 6,355
PE525	5 5/8"	5 5/8"	11 3/16"	GLOBE 007	15.25	\$ 5,995
PE525 W/E155	5 5/8"	5 5/8"	11 3/16"	GLOBE 007	15.25	\$ 6,355
PE523	4 1/8"	4 1/8"	13 3/16"	GLOBE008	9.6	\$ 4,307
PE523 / E155	4 1/8"	4 1/8"	13 3/16"	GLOBE008	9.6	\$ 4,667
PE523	4 1/8"	4 1/8"	10 5/8"	GLOBE009	8.6	\$ 4,307
PE523 / E155	4 1/8"	4 1/8"	10 5/8"	GLOBE009	8.6	\$ 4,667

- Specify metal and patina.
- All LED lights are dimmable.
- Fixtures are UL rated for indoor and outdoor damp locations. A damp location is a protected area that is subject to moisture; such as under the eave of a roof.
- See page Tv-Tviii for electrical box location.
- Fixtures must be mounted independently of outlet box. Support blocking in ceiling is required.

Ceiling Light CF485-LED



Crosby Ceiling Light

- Price includes LED lamp.
- Price includes glass shades.
- 120VAC, 60Hz
- 6.6 W, 2700K

Ceiling Light	Overall Width	Overall Depth	Overall Height	Shade Type	Bulb Type	Wt. lbs.	Price
CF485-LED	12"	12"	2 1/2"	Flat 30 & Flat 35	-	18.00	\$ 2,500

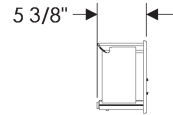
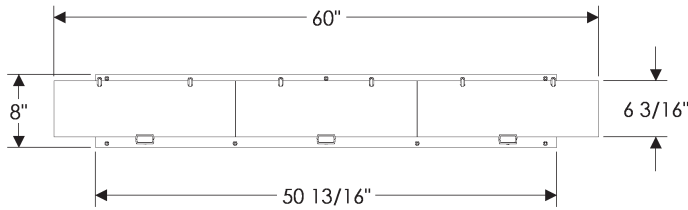
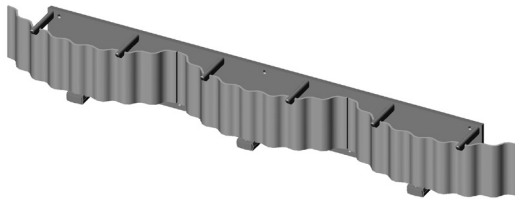
- Specify metal and patina.
- Fixtures are UL rated for indoor and outdoor damp locations. A damp location is a protected area that is subject to moisture; such as under the eave of a roof.
- See page Tv-Tviii for electrical box location.
- Fixtures must be mounted independently of outlet box. Support blocking in wall is recommended.
- See page Ti for leather options. Bronze textures not available. Refer to website or brochure for leather details.

Vanity

V440
w/Flat Glass



V445
w/Corrugated Glass



Triple Plank

- 3 incandescent or compact fluorescent type A bulbs.
- 100 watts maximum ea.
- Bulbs not included.
- Price includes glass shades.



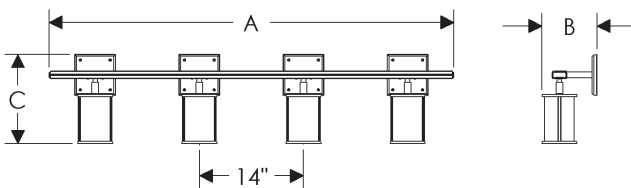
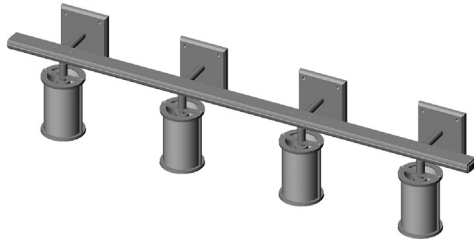
LED Triple Plank

- Price includes LED lamp.
- Price includes glass shades.
- 120VAC, 60Hz
- 10 W, 2700K

Vanity	Overall Width	Overall Projection	Overall Height	Shade Type	Bulb Type	Wt. lbs.	Price
V440	60"	5 3/8"	8"	Plank 20	A	60.00	\$ 7,401
V440-LED	60"	5 3/8"	8"	Plank 20	-	60.00	\$ 7,720
V445	60"	5 1/4"	8"	Corrugated Plank 20	A	60.00	\$ 7,401
V445-LED	60"	5 1/4"	8"	Corrugated Plank 20	-	60.00	\$ 7,720

- Specify metal, patina, and escutcheon.
- Light fixtures are shown with E403 Square escutcheon for illustration purposes only. See pages Tiii -Tiv for available escutcheon options.
- All LED lights are dimmable.
- Fixtures are UL rated for indoor and outdoor damp locations. A damp location is a protected area that is subject to moisture; such as under the eave of a roof.
- See page Tix-Txiv for electrical box location.
- Fixtures must be mounted independently of outlet box. Support blocking in wall is recommended.
- See page Ti for leather options. Bronze textures not available. Refer to website or brochure for leather details.

Vanity V450



Lantern Vanity

- incandescent or compact fluorescent type A bulbs.
- 100 watts maximum ea.
- Bulbs not included.
- Price includes glass shades.
- * Designer escutcheon (E155) requires leather choice.



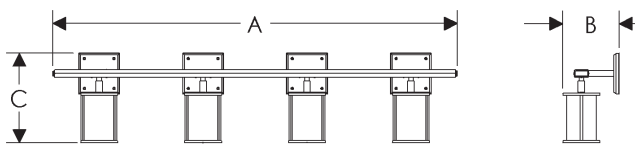
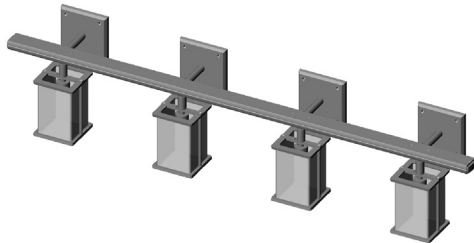
LED Lantern Vanity

- Price includes LED lamp.
- Price includes glass shade.
- 120VAC, 60Hz
- 13 W, 2700K
- * Designer escutcheon (E155) requires leather choice.

Vanity	A Length	B Projection	C Height	# of Globes	Shade Type	Wt. lbs.	Standard Escutcheon	Designer Escutcheon*
V450-26	26 7/16"	7 3/8"	11 15/16"	2	Globe 001	21.00	\$ 3,814	\$ 4,534
V450-26-LED	26 7/16"	7 3/8"	11 15/16"	2	Globe 001	21.00	\$ 4,046	\$ 4,766
V450-40	40 7/16"	7 3/8"	11 15/16"	3	Globe 001	27.00	\$ 5,532	\$ 6,611
V450-40-LED	40 7/16"	7 3/8"	11 15/16"	3	Globe 001	27.00	\$ 5,851	\$ 6,930
V450-54	54 7/16"	7 3/8"	11 15/16"	4	Globe 001	34.00	\$ 7,161	\$ 8,600
V450-54-LED	54 7/16"	7 3/8"	11 15/16"	4	Globe 001	34.00	\$ 7,529	\$ 8,968
V450-68	68 7/16"	7 3/8"	11 15/16"	5	Globe 001	40.00	\$ 8,998	\$ 10,797
V450-68-LED	68 7/16"	7 3/8"	11 15/16"	5	Globe 001	40.00	\$ 9,451	\$ 11,249
V450-82	82 7/16"	7 3/8"	11 15/16"	6	Globe 001	45.00	\$ 10,694	\$ 12,852
V450-82-LED	82 7/16"	7 3/8"	11 15/16"	6	Globe 001	45.00	\$ 11,192	\$ 13,350
V450-94	94 7/16"	7 3/8"	11 15/16"	7	Globe 001	50.00	\$ 12,413	\$ 14,931
V450-94-LED	94 7/16"	7 3/8"	11 15/16"	7	Globe 001	50.00	\$ 12,999	\$ 15,517

- Specify metal, patina, and escutcheon.
- Light fixtures are shown with E403 Square escutcheon for illustration purposes only. See pages Tiii -Tiv for available escutcheon options.
- All LED lights are dimmable.
- Fixtures are UL rated for indoor and outdoor damp locations. A damp location is a protected area that is subject to moisture; such as under the eave of a roof.
- See page Tix-Txiv for electrical box location.
- Fixtures must be mounted independently of outlet box. Support blocking in wall is recommended.
- See page Ti for leather options. Bronze textures not available. Refer to website or brochure for leather details.

Vanity V455



Lantern Vanity

- incandescent or compact fluorescent type A bulbs.
- 100 watts maximum ea.
- Bulbs not included.
- Price includes glass shades.
- * Designer escutcheon (E155) requires leather choice.



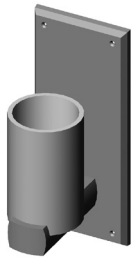
LED Lantern Vanity

- Price includes LED lamp.
- Price includes glass shade.
- 120VAC, 60Hz
- 13 W, 2700K
- * Designer escutcheon (E155) requires leather choice.

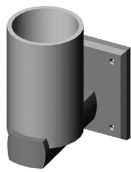
Vanity	A Length	B Projection	C Height	# of Globes	Shade Type	Wt. lbs.	Standard Escutcheon	Designer Escutcheon*
V455-26	26 7/16"	7 3/8"	11 15/16"	2	Globe 004	21.00	\$ 3,814	\$ 4,534
V455-26-LED	26 7/16"	7 3/8"	11 15/16"	2	Globe 004	21.00	\$ 4,046	\$ 4,766
V455-40	40 7/16"	7 3/8"	11 15/16"	3	Globe 004	27.00	\$ 5,532	\$ 6,611
V455-40-LED	40 7/16"	7 3/8"	11 15/16"	3	Globe 004	27.00	\$ 5,851	\$ 6,930
V455-54	54 7/16"	7 3/8"	11 15/16"	4	Globe 004	34.00	\$ 7,161	\$ 8,600
V455-54-LED	54 7/16"	7 3/8"	11 15/16"	4	Globe 004	34.00	\$ 7,529	\$ 8,968
V455-68	68 7/16"	7 3/8"	11 15/16"	5	Globe 004	40.00	\$ 8,998	\$ 10,797
V455-68-LED	68 7/16"	7 3/8"	11 15/16"	5	Globe 004	40.00	\$ 9,451	\$ 11,249
V455-82	82 7/16"	7 3/8"	11 15/16"	6	Globe 004	45.00	\$ 10,694	\$ 12,852
V455-82-LED	82 7/16"	7 3/8"	11 15/16"	6	Globe 004	45.00	\$ 11,192	\$ 13,350
V455-94	94 7/16"	7 3/8"	11 15/16"	7	Globe 004	50.00	\$ 12,413	\$ 14,931
V455-94-LED	94 7/16"	7 3/8"	11 15/16"	7	Globe 004	50.00	\$ 12,999	\$ 15,517

- Specify metal, patina, and escutcheon.
- See pages Tiii -Tiv for available escutcheon options.
- All LED lights are dimmable.
- Fixtures are UL listed for indoor and outdoor damp locations and wet locations. A damp location is a protected area that is subject to moisture; such as under the eave of a roof.
- See page Tv-Tviii for electrical box location.
- Fixtures must be mounted independently of outlet box. Support blocking in wall is recommended.
- See page Ti for leather options. Bronze textures not available. Refer to website or brochure for leather details.

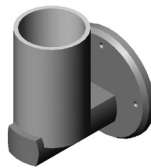
Wall Sconce WS400



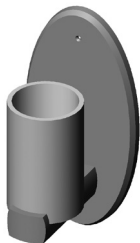
w/G4513



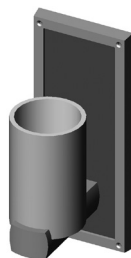
w/E403



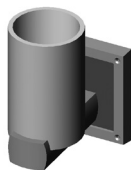
w/E419



w/E560



w/G153*



w/E155*

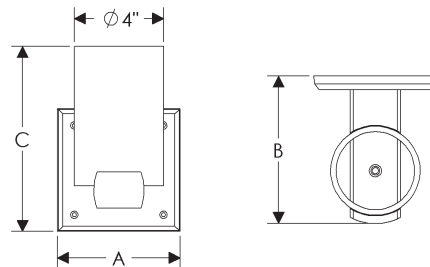
Post Sconce

- 1 incandescent or compact fluorescent type A bulb.
- 100 watts maximum.
- Bulb not included.
- Price includes glass shade (Globe 001).
- Available for wet locations (Globe 001-W).
- * Designer escutcheon requires leather choice.



LED Post Sconce

- Price includes LED lamp.
- Price includes glass shade (Globe 001).
- Available for wet locations (Globe 001-W).
- 120VAC, 60Hz
- 3.3 W, 2700K
- * Designer escutcheon requires leather choice.



WS400	A Width	B Projecton	C Height	Shade Type	Bulb Type	Wt. lbs.	Price	LED Price
w/G4513	5 1/2"	6 5/8"	13"	Globe 001	A	11.00	\$ 1,990	\$ 2,191
w/E403	5 1/2"	6 5/8"	8 5/16"	Globe 001	A	10.00	\$ 1,990	\$ 2,191
w/E419	6 1/2"	6 5/8"	8 5/8"	Globe 001	A	10.00	\$ 1,990	\$ 2,191
w/E560	6 1/2"	6 5/8"	13"	Globe 001	A	11.00	\$ 1,990	\$ 2,191
w/G153*	5 1/2"	6 5/8"	13"	Globe 001	A	11.00	\$ 2,430	\$ 2,631
w/E155*	5 1/2"	6 5/8"	8 5/16"	Globe 001	A	10.00	\$ 2,350	\$ 2,550

- Specify metal, patina, and escutcheon.
- See pages Tiii -Tiv for available escutcheon options.
- All LED lights are dimmable.
- Fixtures are UL listed for indoor and outdoor damp locations and wet locations. A damp location is a protected area that is subject to moisture; such as under the eave of a roof.
- See page Tv-Tviii for electrical box location.
- Fixtures must be mounted independently of outlet box. Support blocking in wall is recommended.
- See page Ti for leather options. Bronze textures not available. Refer to website or brochure for leather details.

Wall Sconce WS405

Up-Light Orientation (Damp and Wet Location)



w/G4513



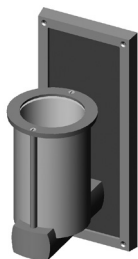
w/E403



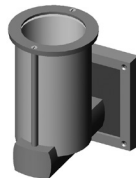
w/E419



w/E560



w/G153*



w/E155*

Down-Light Orientation (Damp Location Only)



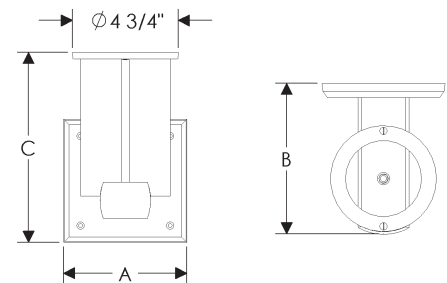
Post-Ring Sconce

- 1 incandescent or compact fluorescent type A bulb.
- 100 watts maximum.
- Bulb not included.
- Price includes glass shade (Globe 001).
- Available for wet locations (Globe 001-W).
- * Designer escutcheon requires leather choice.



LED Post-Ring Sconce

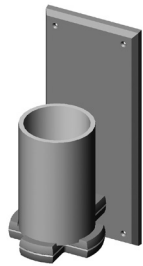
- Price includes LED lamp.
- Price includes glass shade (Globe 001).
- Available for wet locations (Globe 001-W).
- 120VAC, 60Hz
- 3.3 W, 2700K
- * Designer escutcheon requires leather choice.



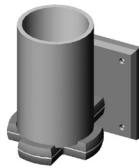
WS405	A Width	B Projecton	C Height	Shade Type	Bulb Type	Wt. lbs.	Price	LED Price
w/G4513	5 1/2"	6 7/8"	13"	Globe 001	A	11.00	\$ 2,205	\$ 2,405
w/E403	5 1/2"	6 7/8"	8 5/8"	Globe 001	A	10.00	\$ 2,205	\$ 2,405
w/E419	6 1/2"	6 7/8"	9 1/8"	Globe 001	A	10.00	\$ 2,205	\$ 2,405
w/E560	6 1/2"	6 7/8"	13"	Globe 001	A	11.00	\$ 2,205	\$ 2,405
w/G153*	5 1/2"	6 7/8"	13"	Globe 001	A	11.00	\$ 2,645	\$ 2,845
w/E155*	5 1/2"	6 7/8"	8 5/8"	Globe 001	A	10.00	\$ 2,565	\$ 2,765

- Specify metal, patina, and escutcheon.
- See pages Tiii -Tiv for available escutcheon options.
- All LED lights are dimmable.
- Fixtures are UL listed for indoor and outdoor damp locations and wet locations. A damp location is a protected area that is subject to moisture; such as under the eave of a roof.
- See page Tv-Tviii for electrical box location.
- Fixtures must be mounted independently of outlet box. Support blocking in wall is recommended.
- See page Ti for leather options. Bronze textures not available. Refer to website or brochure for leather details.

Wall Sconce WS410



w/G4513



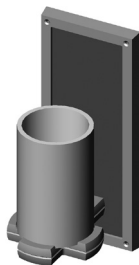
w/E403



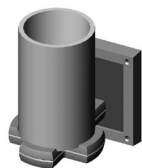
w/E419



w/E560



w/G153*



w/E155*

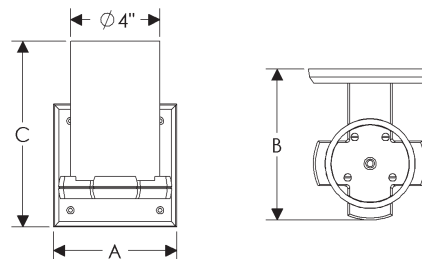
Truss Sconce

- 1 incandescent or compact fluorescent type A bulb.
- 100 watts maximum.
- Bulb not included.
- Price includes glass shade (Globe 001).
- Available for wet locations (Globe 001-W).
- * Designer escutcheon requires leather choice.



LED Truss Sconce

- Price includes LED lamp.
- Price includes glass shade (Globe 001).
- Available for wet locations (Globe 001-W).
- 120VAC, 60Hz
- 3.3 W, 2700K
- * Designer escutcheon requires leather choice.



WS410	A Width	B Projecton	C Height	Shade Type	Bulb Type	Wt. lbs.	Price	LED Price
w/G4513	5 1/2"	6 3/4"	13"	Globe 001	A	11.00	\$ 2,038	\$ 2,238
w/E403	5 1/2"	6 3/4"	8 5/16"	Globe 001	A	10.00	\$ 2,038	\$ 2,238
w/E419	6 1/2"	6 3/4"	8 13/16"	Globe 001	A	10.00	\$ 2,038	\$ 2,238
w/E560	6 1/2"	6 3/4"	13"	Globe 001	A	11.00	\$ 2,038	\$ 2,238
w/G153*	5 1/2"	6 3/4"	13"	Globe 001	A	11.00	\$ 2,478	\$ 2,678
w/E155*	5 1/2"	6 3/4"	8 5/16"	Globe 001	A	10.00	\$ 2,397	\$ 2,598

- Specify metal, patina, and escutcheon.
- See pages Tiii -Tiv for available escutcheon options.
- All LED lights are dimmable.
- Fixtures are UL listed for indoor and outdoor damp locations and wet locations. A damp location is a protected area that is subject to moisture; such as under the eave of a roof.
- See page Tv-Tviii for electrical box location.
- Fixtures must be mounted independently of outlet box. Support blocking in wall is recommended.
- See page Ti for leather options. Bronze textures not available. Refer to website or brochure for leather details.

Wall Sconce WS415

Up-Light Orientation (Damp and Wet Location)



w/G4513



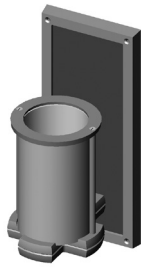
w/E403



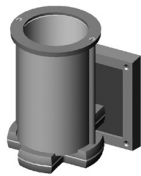
w/E419



w/E560



w/G153*



w/E155*

Down-Light Orientation (Damp Location Only)



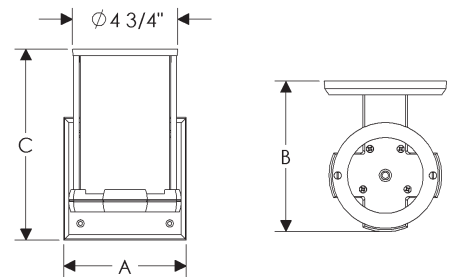
Truss-Ring Sconce

- 1 incandescent or compact fluorescent type A bulb.
- 100 watts maximum.
- Bulb not included.
- Price includes glass shade (Globe 001).
- Available for wet locations (Globe 001-W).
- * Designer escutcheon requires leather choice.



LED Truss-Ring Sconce

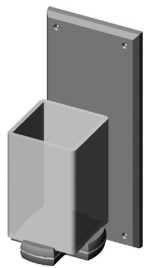
- Price includes LED lamp.
- Price includes glass shade (Globe 001).
- Available for wet locations (Globe 001-W).
- 120VAC, 60Hz
- 3.3 W, 2700K
- * Designer escutcheon requires leather choice.



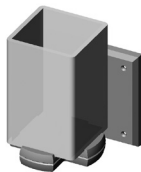
WS415	A Width	B Projecton	C Height	Shade Type	Bulb Type	Wt. lbs.	Price	LED Price
w/G4513	5 1/2"	6 3/4"	13"	Globe 001	A	11.00	\$ 2,258	\$ 2,458
w/E403	5 1/2"	6 3/4"	8 9/16"	Globe 001	A	10.00	\$ 2,258	\$ 2,458
w/E419	6 1/2"	6 3/4"	9 1/16"	Globe 001	A	10.00	\$ 2,258	\$ 2,458
w/E560	6 1/2"	6 3/4"	13"	Globe 001	A	11.00	\$ 2,258	\$ 2,458
w/G153*	5 1/2"	6 3/4"	13"	Globe 001	A	11.00	\$ 2,698	\$ 2,898
w/E155*	5 1/2"	6 3/4"	8 9/16"	Globe 001	A	10.00	\$ 2,617	\$ 2,818

- Specify metal, patina, and escutcheon.
- See pages Tiii -Tiv for available escutcheon options.
- All LED lights are dimmable.
- Fixtures are UL listed for indoor and outdoor damp locations and wet locations. A damp location is a protected area that is subject to moisture; such as under the eave of a roof.
- See page Tv-Tviii for electrical box location.
- Fixtures must be mounted independently of outlet box. Support blocking in wall is recommended.
- See page Ti for leather options. Bronze textures not available. Refer to website or brochure for leather details.

Wall Sconce WS416



w/G4513



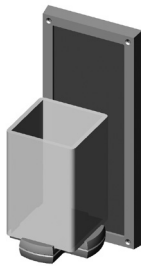
w/E403



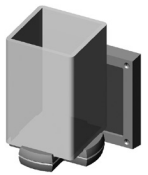
w/E419



w/E560



w/G153*



w/E155*

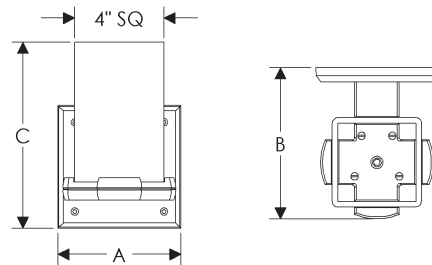
Truss Sconce

- 1 incandescent or compact fluorescent type A bulb.
- 100 watts maximum.
- Bulb not included.
- Price includes glass shade (Globe 004).
- Available for wet locations (Globe 004-W).
- * Designer escutcheon requires leather choice.



LED Truss Sconce

- Price includes LED lamp.
- Price includes glass shade (Globe 004).
- Available for wet locations (Globe 004-W).
- 120VAC, 60Hz
- 3.3 W, 2700K
- * Designer escutcheon requires leather choice.

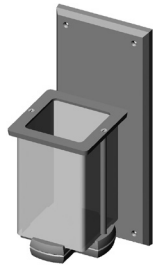


WS416	A Width	B Projecton	C Height	Shade Type	Bulb Type	Wt. lbs.	Price	LED Price
w/G4513	5 1/2"	6 3/4"	13"	Globe 004	A	11.00	\$ 2,038	\$ 2,238
w/E403	5 1/2"	6 3/4"	8 5/16"	Globe 004	A	10.00	\$ 2,038	\$ 2,238
w/E419	6 1/2"	6 3/4"	8 13/16"	Globe 004	A	10.00	\$ 2,038	\$ 2,238
w/E560	6 1/2"	6 3/4"	13"	Globe 004	A	11.00	\$ 2,038	\$ 2,238
w/G153*	5 1/2"	6 3/4"	13"	Globe 004	A	11.00	\$ 2,478	\$ 2,678
w/E155*	5 1/2"	6 3/4"	8 5/16"	Globe 004	A	10.00	\$ 2,397	\$ 2,598

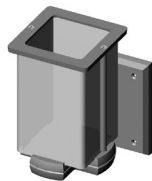
- Specify metal, patina, and escutcheon.
- See pages Tiii -Tiv for available escutcheon options.
- All LED lights are dimmable.
- Fixtures are UL listed for indoor and outdoor damp locations and wet locations. A damp location is a protected area that is subject to moisture; such as under the eave of a roof.
- See page Tv-Tviii for electrical box location.
- Fixtures must be mounted independently of outlet box. Support blocking in wall is recommended.
- See page Ti for leather options. Bronze textures not available. Refer to website or brochure for leather details.

Wall Sconce WS418

Up-Light Orientation (Damp and Wet Location)



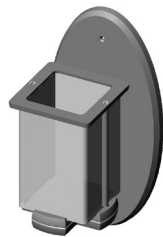
w/G4513



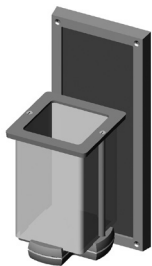
w/E403



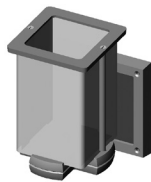
w/E419



w/E560

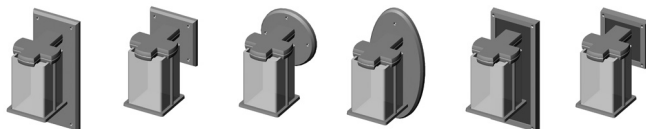


w/G153*



w/E155*

Down-Light Orientation (Damp Location Only)



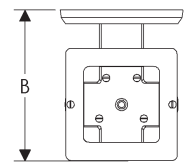
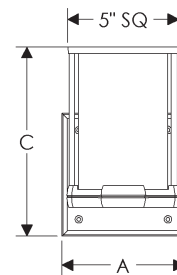
Truss-Ring Sconce

- 1 incandescent or compact fluorescent type A bulb.
- 100 watts maximum.
- Bulb not included.
- Price includes glass shade (Globe 004).
- Available for wet locations (Globe 004-W).
- * Designer escutcheon requires leather choice.



LED Truss-Ring Sconce

- Price includes LED lamp.
- Price includes glass shade (Globe 004).
- Available for wet locations (Globe 004-W).
- 120VAC, 60Hz
- 3.3 W, 2700K
- * Designer escutcheon requires leather choice.

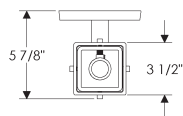
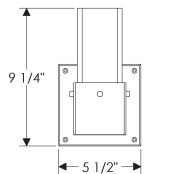
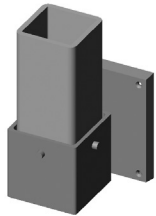


WS418	A Width	B Projecton	C Height	Shade Type	Bulb Type	Wt. lbs.	Price	LED Price
w/G4513	5 1/2"	6 3/4"	13"	Globe 004	A	11.00	\$ 2,258	\$ 2,458
w/E403	5 1/2"	6 3/4"	8 1/2"	Globe 004	A	10.00	\$ 2,258	\$ 2,458
w/E419	6 1/2"	6 3/4"	9"	Globe 004	A	10.00	\$ 2,258	\$ 2,458
w/E560	6 1/2"	6 3/4"	13"	Globe 004	A	11.00	\$ 2,258	\$ 2,458
w/G153*	5 1/2"	6 3/4"	13"	Globe 004	A	11.00	\$ 2,698	\$ 2,898
w/E155*	5 1/2"	6 3/4"	8 1/2"	Globe 004	A	10.00	\$ 2,617	\$ 2,818

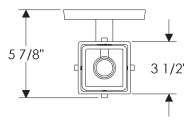
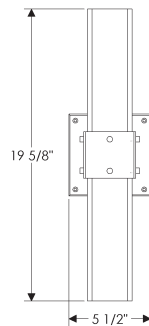
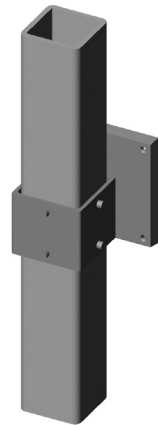
- Specify metal and patina.
- See pages Tiii -Tiv for available escutcheon options.
- All LED lights are dimmable.
- Fixtures are UL listed for indoor and outdoor damp locations. A damp location is a protected area that is subject to moisture; such as under the eave of a roof.
- See page Tv-Tviii for electrical box location.
- Fixtures must be mounted independently of outlet box. Support blocking in wall is recommended.
- See page Ti for leather options. Bronze textures not available. Refer to website or brochure for leather details.

Wall Sconces

Charlie
WS419



Double Charlie
WS423



Wall Sconce

- incandescent type bulb.
- 100 watts maximum.
- Bulb not included.
- Price includes glass shade when applicable.
- * Requires leather choice.

LED Wall Sconce

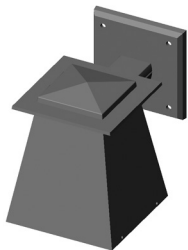
- Price includes LED lamp.
- Price includes glass shade when applicable.
- 120VAC, 60Hz
- 3.3 W, 2700K (WS419)
- 6.6 W, 2700K (WS423)
- * Requires leather choice.

Wall Sconce	Escutcheon	Overall Width	Overall Projection	Overall Height	Shade Type	Bulb Type	Wt. lbs.	Price	LED Price
WS419	E280	5 1/2"	5 7/8"	9 1/4"	S Tube 001	A or T	10.00	\$ 2,130	\$ 2,330
WS419	E155*	5 1/2"	5 7/8"	9 1/4"	S Tube 001	A or T	10.00	\$ 2,490	\$ 2,690
WS423	E280	5 1/2"	5 7/8"	19 5/8"	S Tube 003	A or T	15.00	\$ 3,588	\$ 3,788
WS423	E155*	5 1/2"	5 7/8"	19 5/8"	S Tube 003	A or T	15.00	\$ 3,947	\$ 4,147
WS423	G291	4"	5 7/8"	30"	S Tube 003	A or T	15.00	\$ 3,588	\$ 3,788

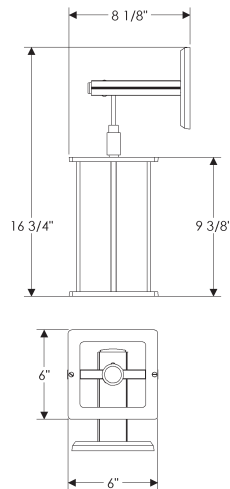
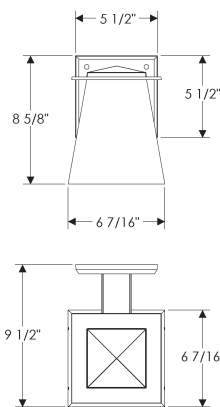
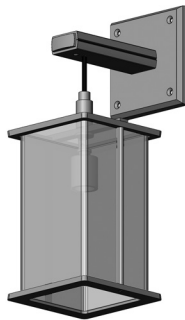
- Specify metal and patina.
- See pages Tiii -Tiv for available escutcheon options.
- All LED lights are dimmable.
- Fixtures are UL listed for indoor and outdoor damp locations. A damp location is a protected area that is subject to moisture; such as under the eave of a roof.
- See page Tv-Tviii for electrical box location.
- Fixtures must be mounted independently of outlet box. Support blocking in wall is recommended.
- See page Ti for leather options. Bronze textures not available. Refer to website or brochure for leather details.

Wall Sconces

Lantern
WS465



Echo
WS590



Wall Sconce

- incandescent type bulb.
- 100 watts maximum.
- Bulb not included.
- Price includes glass shade when applicable.
- * Requires leather choice.

LED Wall Sconce

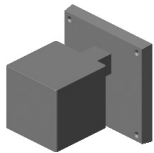
- Price includes LED lamp.
- Price includes glass shade.
- 120VAC, 60Hz
- 6.6 W, 2700K (WS465)
- 3.3 W, 2700K (WS590)
- * Requires leather choice.

Wall Sconce	Escutcheon	Overall Width	Overall Projection	Overall Height	Shade Type	Bulb Type	Wt. lbs.	Price	LED Price
WS465	E403	6 7/16"	9 1/2"	8 5/8"	-	A	27.00	\$ 2,351	\$ 2,661
WS465	G4513	6 7/16"	9 1/2"	13"	-	A	30.00	\$ 2,351	\$ 2,661
WS590	E403	6"	8 1/8"	16 3/4"	Globe 005	A	12.00	\$ 3,747	\$ 3,947
WS590	E155*	6"	8 1/8"	16 3/4"	Globe 005	A	12.00	\$ 4,107	\$ 4,307

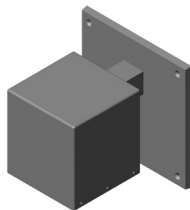
- Specify metal and patina.
- See pages Tiii -Tiv for available escutcheon options.
- All LED lights are dimmable.
- Fixtures are UL listed for indoor and outdoor damp locations. A damp location is a protected area that is subject to moisture; such as under the eave of a roof.
- See page Tv-Tviii for electrical box location.
- Fixtures must be mounted independently of outlet box. Support blocking in wall is recommended.

Wall Sconces

Dice
WS466

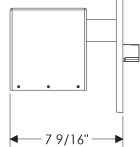
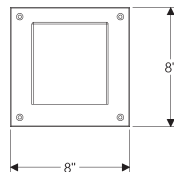
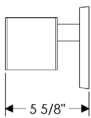
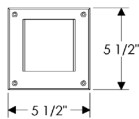


Gateway
WS468



LED Wall Sconce

- Price includes LED lamp.
- Price includes glass shade when applicable.
- 120VAC, 60Hz
- 3.3 W, 2700K (WS466)
- 6.6 W, 2700K (WS468)



Wall Sconce	Escutcheon	Overall Width	Overall Projection	Overall Height	Shade Type	Bulb Type	Wt. lbs.	Price	LED Price
WS466	E280	5 1/2"	5 5/8"	5 1/2"	-	-	8.00	-	\$2,338
WS468	E281	8"	7 9/16"	8"	-	-	19.00	-	\$3,539

- Specify metal, patina, and escutcheon.
- See pages Tiii -Tiv for available escutcheon options.
- Fixtures are UL listed for indoor locations. A damp location is a protected area that is subject to moisture; such as under the eave of a roof.
- See page Tv-Tviii for electrical box location.
- Fixtures must be mounted independently of outlet box. Support blocking in wall is recommended.
- See page Ti for leather options. Bronze textures not available. Refer to website or brochure for leather details.

Wall Sconce WS500



w/G4513



w/E403



w/E419



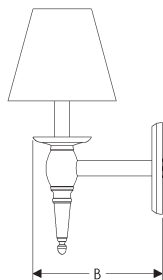
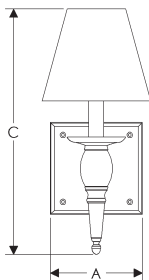
w/E560



w/G153



w/E155



with crystals only

with prism only

with crystals & prism

Towne Sconce

- 3 incandescent or compact fluorescent type B bulbs.
- 60 watts maximum ea.
- Bulbs not included.
- Price includes fabric shade.
- * Requires leather choice.



SHADE OPTIONS



Cone 1



Drum 1

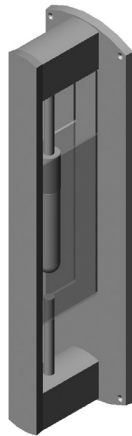
WS500	A Width	B Projection	C Height	Wt. lbs.	Option A	Option B	Option C	Option D
w/G4513	5 1/2"	7 3/4"	14 11/16"	9.50	\$ 1,995	\$ 2,134	\$ 2,152	\$ 2,292
w/E403	5 1/2"	7 3/4"	14 11/16"	6.50	\$ 1,995	\$ 2,134	\$ 2,152	\$ 2,292
w/E419	6 1/2"	7 3/4"	14 11/16"	7.00	\$ 1,995	\$ 2,134	\$ 2,152	\$ 2,292
w/E560	6 1/2"	7 3/4"	14 11/16"	9.00	\$ 1,995	\$ 2,134	\$ 2,152	\$ 2,292
w/G153*	5 1/2"	7 3/4"	14 11/16"	8.50	\$ 2,435	\$ 2,574	\$ 2,592	\$ 2,732
w/E155*	5 1/2"	7 3/4"	14 11/16"	6.50	\$ 2,354	\$ 2,494	\$ 2,512	\$ 2,651

- Specify metal and patina.
- All LED lights are dimmable.
- Fixtures are UL listed for indoor and outdoor damp locations. A damp location is a protected area that is subject to moisture; such as under the eave of a roof.
- See page Tv-Tviii for electrical box location.
- Fixtures must be mounted independently of outlet box. Support blocking in wall is recommended.

Wall Sconce WS421



w/G504



w/G520

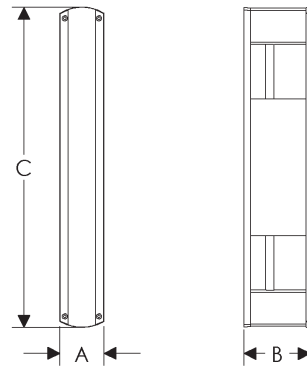
Mod Sconce

- incandescent type 25T6.5 bulb.
- 75 watts maximum.
- Bulb included. (25 watt)
- Price includes glass shade when applicable.



LED Mod Sconce

- Price includes LED lamp.
- Price includes glass shade.
- 120VAC, 60Hz
- 3.3 W, 2700K



Wall Sconce	Escutcheon	A Width	B Projection	C Height	Shade Type	Bulb Type	Wt. lbs.	Price	LED Price
WS421	G504	2 3/4"	4 1/8"	20"	Mod Glass	25T6.5	14.00	\$ 2,304	\$ 2,504
WS421	G520	5"	4 1/4"	20"	Mod Glass	25T6.5	21.00	\$ 2,304	\$ 2,504

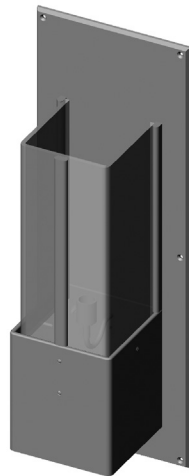
- Specify metal and patina.
- All LED lights are dimmable.
- Fixtures are UL listed for indoor and outdoor damp locations. A damp location is a protected area that is subject to moisture; such as under the eave of a roof.
- See page Tv-Tviii for electrical box location.
- Fixtures must be mounted independently of outlet box. Support blocking in wall is required.

Wall Sconce

Small Vessel
WS425



Vessel
WS430



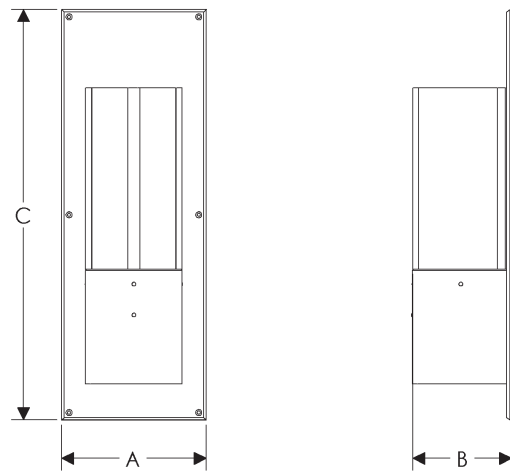
Wall Sconce

- incandescent type bulb.
- 100 watts maximum.
- Bulb not included.
- Price includes glass shade when applicable.



LED Wall Sconce

- Price includes LED lamp.
- Price includes glass shade when applicable.
- 120VAC, 60Hz
- 6.6 W, 2700K



Wall Sconce	A Width	B Projection	C Height	Shade Type	Bulb Type	Wt. lbs.	Price	LED Price
WS425	8"	5 1/2"	24"	Shade 425	A	30.00	\$ 4,260	\$ 4,494
WS430	12"	8 3/16"	33 15/16"	Square Slump 7	A	85.00	\$ 6,888	\$ 7,120

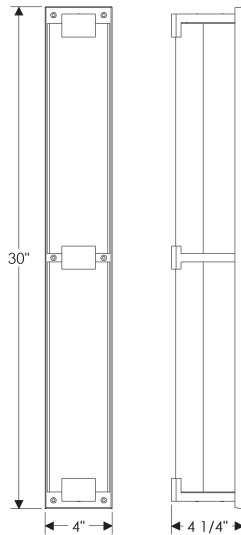
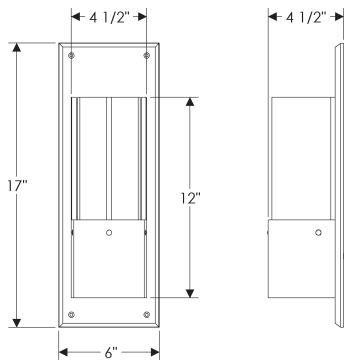
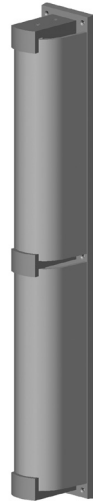
- Specify metal and patina.
- All LED lights are dimmable.
- Fixtures are UL listed for indoor and outdoor damp locations. A damp location is a protected area that is subject to moisture; such as under the eave of a roof.
- See page Tv-Tviii for electrical box location.
- Fixtures must be mounted independently of outlet box. Support blocking in wall is required.

Wall Sconce

Tunnel
WS480



Double Tunnel
WS420



Wall Sconce

- incandescent type bulb.
- 100 watts maximum.
- Bulb not included.
- Price includes glass shade when applicable.



LED Wall Sconce

- Price includes LED lamp.
- Price includes glass shade when applicable.
- 120VAC, 60Hz
- 3.3 W, 2700K (WS480)
- 13.2 W, 2700K (WS420)

Wall Sconce	Overall Width	Overall Projection	Overall Height	Shade Type	Bulb Type	Wt. lbs.	Price	LED Price
WS480	6"	4 1/2"	17"	Curve Slump 3.5	A	18.00	\$ 2,051	\$ 2,251
WS420	4"	4 1/4"	30"	Curve Slump 4	A	30.00	\$ 3,654	\$ 4,054

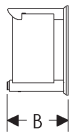
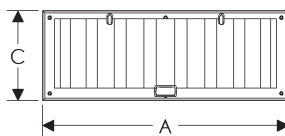
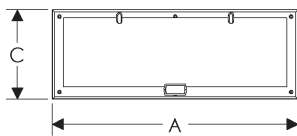
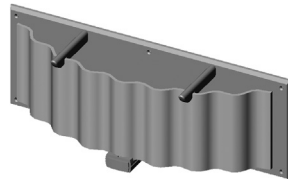
- Specify metal and patina.
- All LED lights are dimmable.
- Fixtures are UL listed for indoor and outdoor damp locations. A damp location is a protected area that is subject to moisture; such as under the eave of a roof.
- See page Tv-Tviii for electrical box location.
- Fixtures must be mounted independently of outlet box. Support blocking in wall is required.

Wall Sconce

Plank, WS440
w/Flat Glass



Plank, WS445
w/Corrugated Glass



Wall Sconce

- incandescent type bulb.
- 100 watts maximum.
- Bulb not included.
- Price includes glass shade.



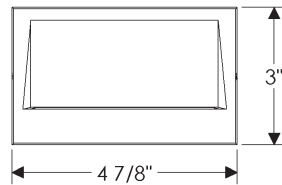
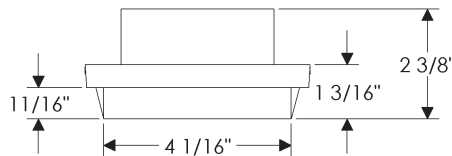
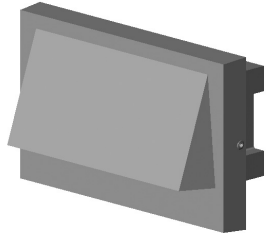
LED Wall Sconce

- Price includes LED lamp.
- Price includes glass shade.
- 120VAC, 60Hz
- 3.3 W, 2700K

Wall Sconce	A Width	B Projection	C Height	Shade Type	Bulb Type	Wt. lbs.	Price	LED Price
WS440	22"	5 1/4"	8"	Plank 20	A	22.00	\$2,677	\$2,877
WS445	22"	5 1/4"	8"	Corrugated Plank 20	A	22.00	\$2,677	\$2,877

- Specify metal and patina.
- Fixtures are UL listed for indoor and outdoor damp and wet locations. A damp location is a protected area that is subject to moisture; such as under the eave of a roof.
- Fixture intended to be installed utilizing NEC compliant 4" x 2" junction box. LED driver must fit within junction box. See diagram below for driver dimensions.

Pathway Light LG400



LED Horizontal Pathway Light

- 120V, 60HZ
- 2.9W, 0.03A, 3000K
- Suitable for dry, damp, & wet locations.
- Non-dimmable

Pathway Light	Overall Width	Overall Projection	Overall Height	Wt. lbs.	Price
LG400	4 7/8"	13/16"	3"	1.00	\$ 666

