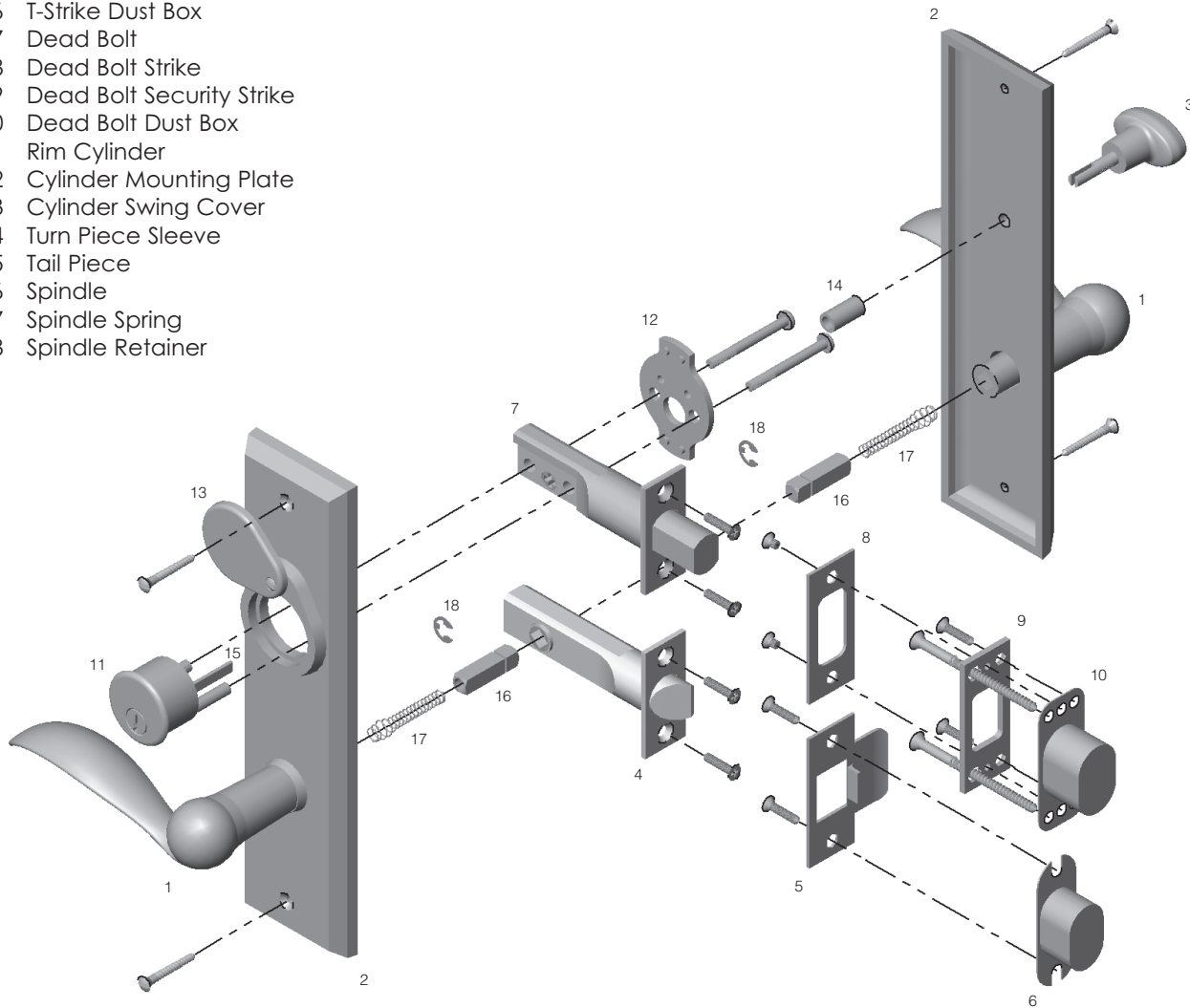


# ROCKY MOUNTAIN

H A R D W A R E

## Entry Spring Latch / Dead Bolt - Lever to Lever

- 1 Lever
- 2 Escutcheon
- 3 Turn Piece
- 4 Spring Latch
- 5 T-Strike
- 6 T-Strike Dust Box
- 7 Dead Bolt
- 8 Dead Bolt Strike
- 9 Dead Bolt Security Strike
- 10 Dead Bolt Dust Box
- 11 Rim Cylinder
- 12 Cylinder Mounting Plate
- 13 Cylinder Swing Cover
- 14 Turn Piece Sleeve
- 15 Tail Piece
- 16 Spindle
- 17 Spindle Spring
- 18 Spindle Retainer





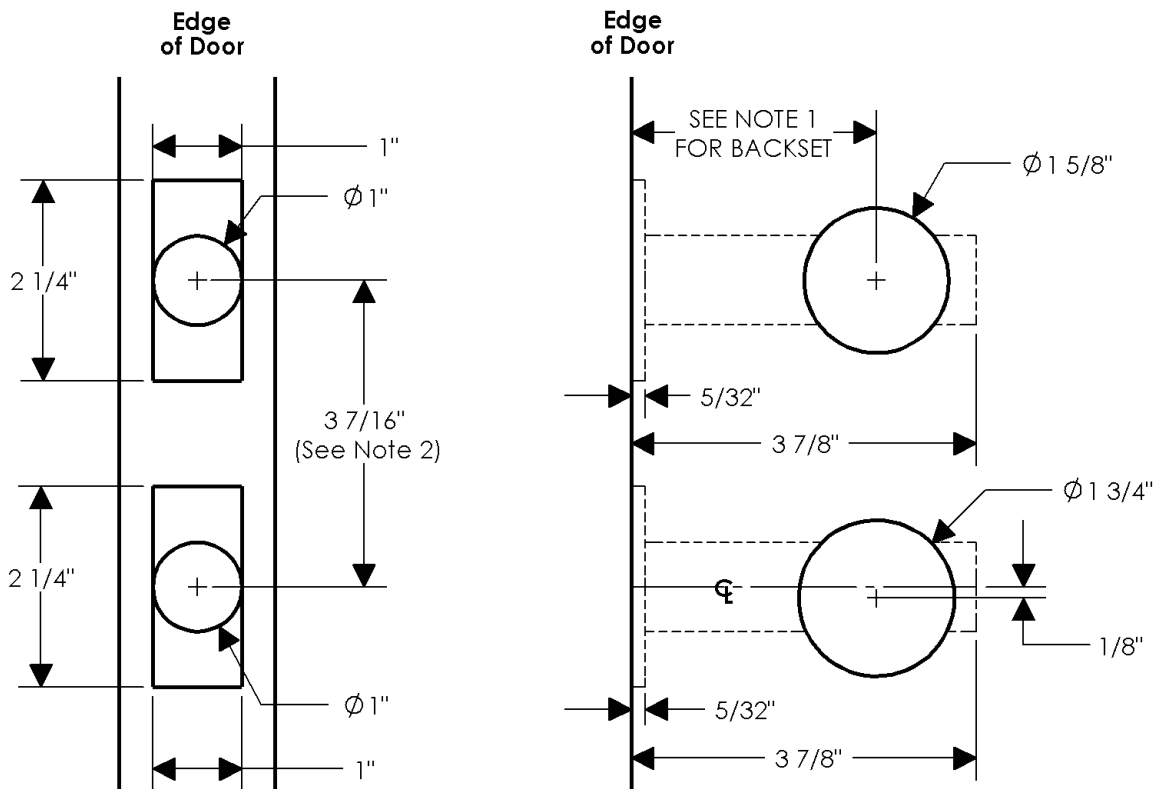
## EDGE COLLECTION - DOOR PREPARATORY SPECIFICATIONS

### Entry Spring Latch/Dead Bolt - Interior & Exterior

Not Applicable to Element, or Bluetooth Options

Notes:

1. This bore specification is applicable for 2 3/8" or 2 3/4" backset spring latches/dead bolts.
2. This center-to-center dimension may change with escutcheon selection.
3. 1 3/4" minimum door thickness.



# ROCKY MOUNTAIN

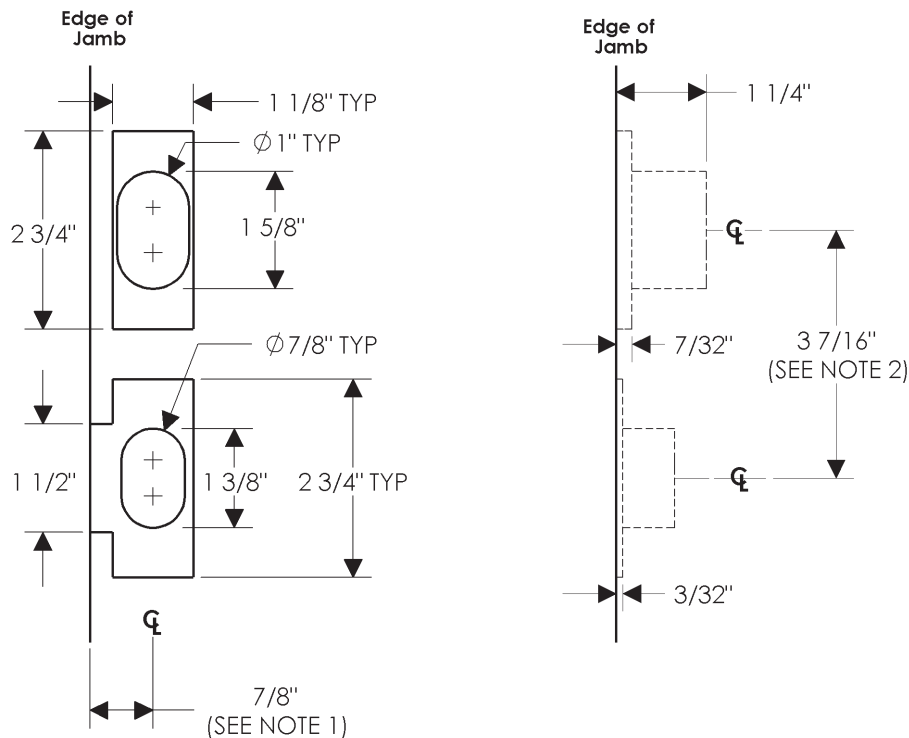
H A R D W A R E

## EDGE COLLECTION - DOOR PREPARATORY SPECIFICATIONS

### Strike - Patio and Entry Spring Latch/Dead Bolt

#### Notes:

1. This dimension is 1/2 of door thickness, eg., 1 3/4" divided by 2 = 7/8". This dimension will have to be adjusted for different door thicknesses and unusual jamb or door conditions.
2. This center-to-center dimension may be changed with escutcheon selection.
3. 1 3/4" minimum door thickness.



Scan For Video  
Instructions