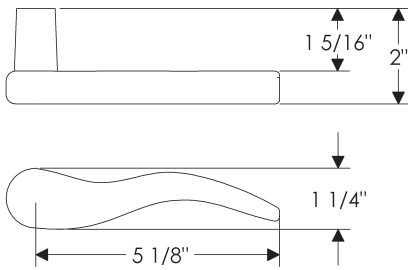
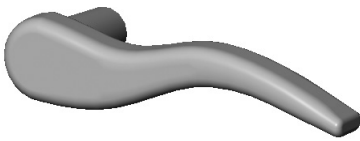
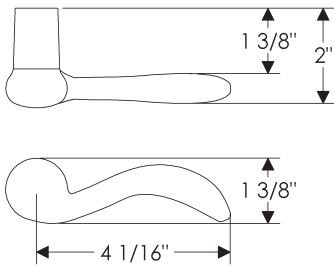


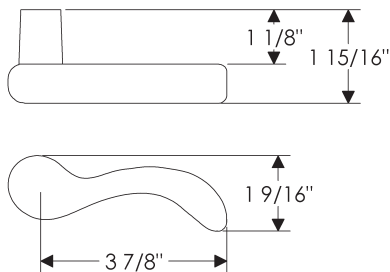
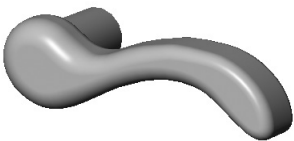
**L075 Ellis Lever**



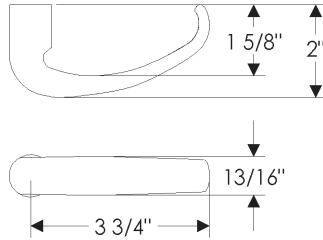
**L101 Longhorn Lever**



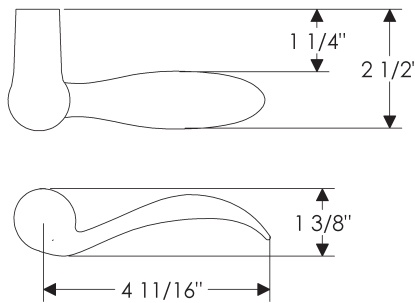
**L102 Squirrel Tail Lever**



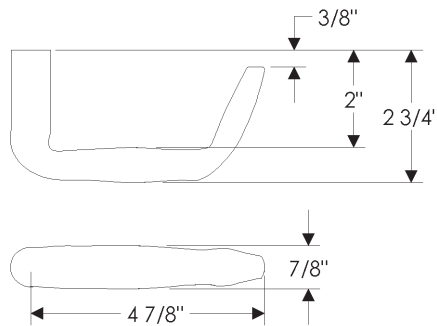
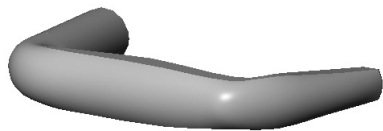
**L103 Chub Lever**  
Also available:  
L112 Large Chub Lever



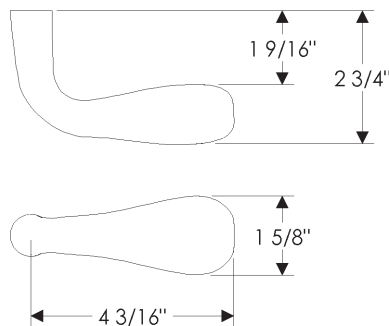
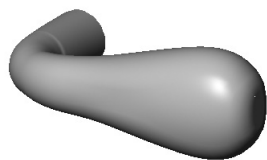
**L104 Hook Lever**  
Also available:  
L122 Large Hook Lever



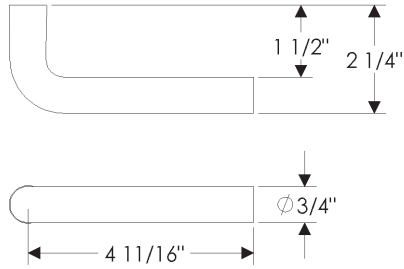
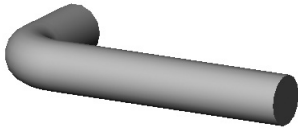
**L105 Beaver Tail Lever**



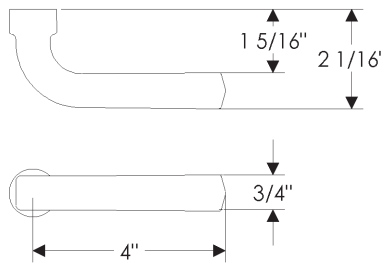
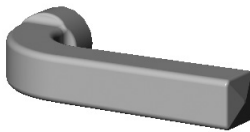
**L106 Talon Lever**



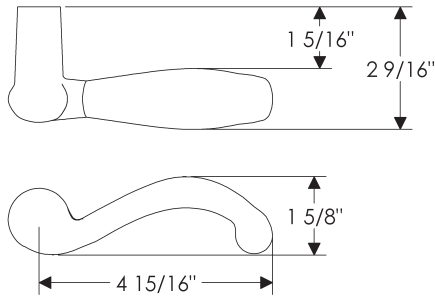
**L107 Slugger Lever**



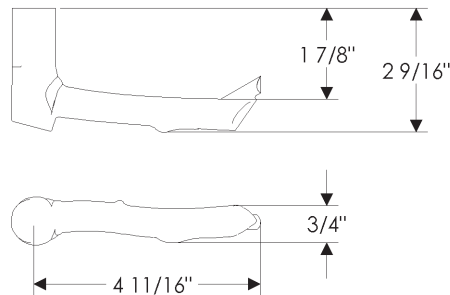
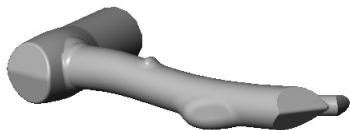
**L108 Tube Lever**



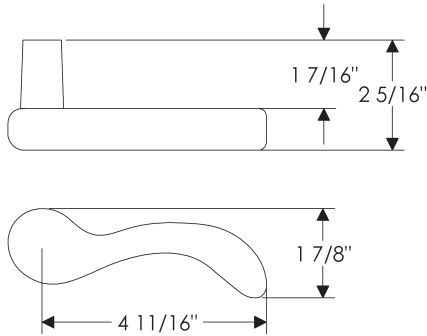
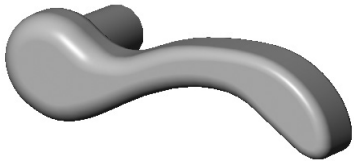
**L109 Legacy Lever**  
Also available:  
L119 Long Legacy Lever



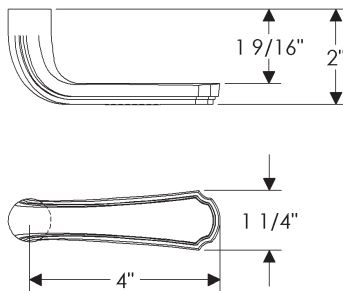
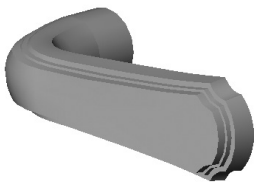
**L110 Classic Lever**  
Also available:  
L128 Small Classic Lever



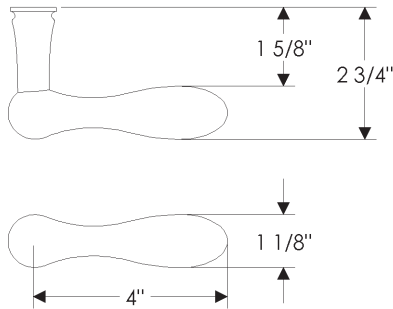
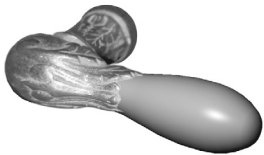
**L111 Twig Lever**



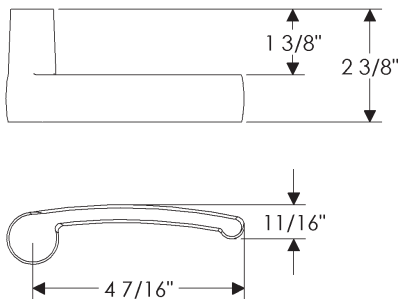
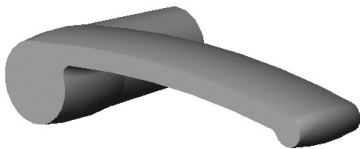
**L112 Large Chub Lever**  
Also available:  
L103 Chub Lever



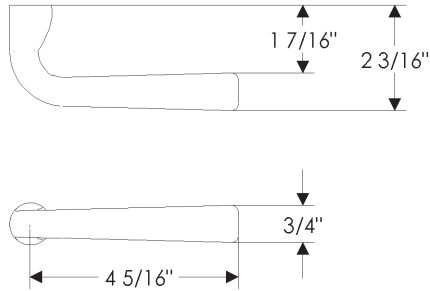
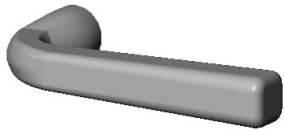
**L113 Carriage Lever**



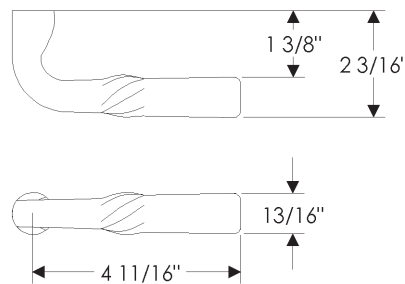
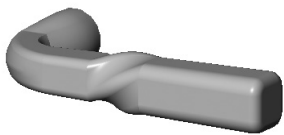
**L115 Acanthus Lever**  
Also available:  
L158 Large Acanthus Lever



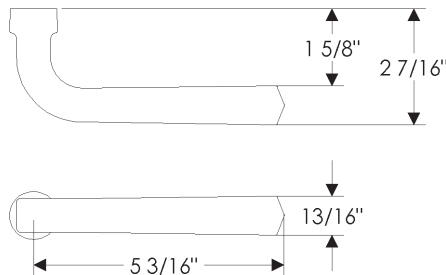
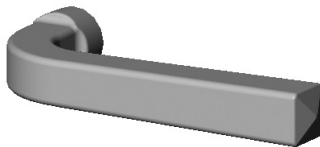
**L116 Herron Lever**



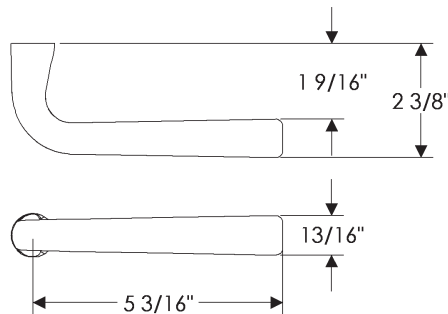
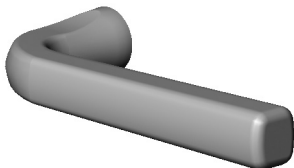
**L117 French Lever**  
 Also available:  
 L120 Long French Lever  
 L241 Large French Lever



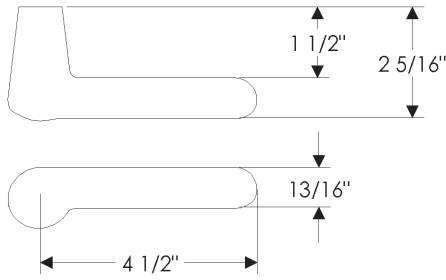
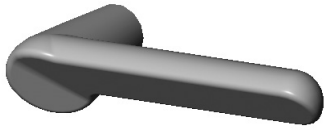
**L118 French Twist Lever**



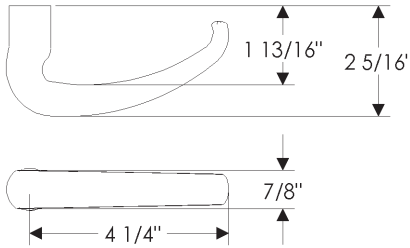
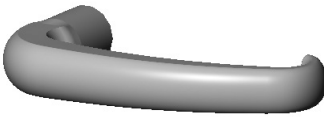
**L119 Long Legacy Lever**  
 Also available:  
 L109 Legacy Lever



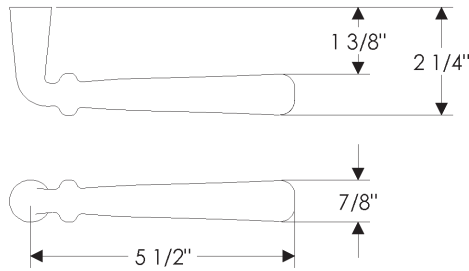
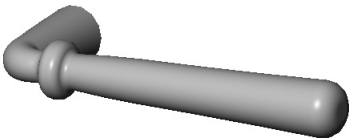
**L120 Long French Lever**  
 Also available:  
 L117 French Lever  
 L241 Large French Lever



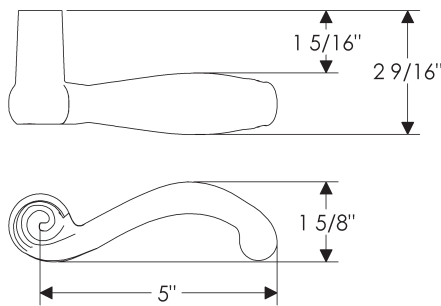
**L121** Rock Creek Lever  
Also available:  
L141 Large Rock Creek Lever



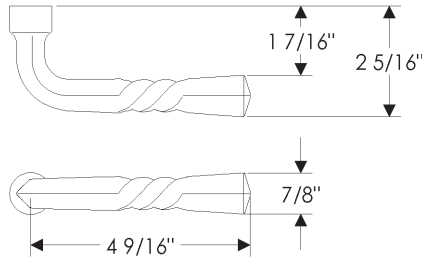
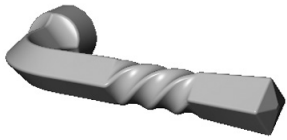
**L122** Large Hook Lever  
Also available:  
L104 Hook Lever



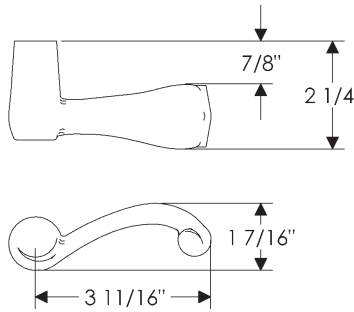
**L123** Old World Lever



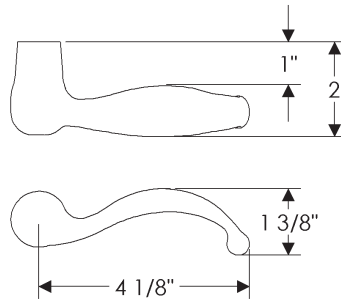
**L125** Classic Scroll Lever  
Also available:  
L156 Large Classic Scroll Lever



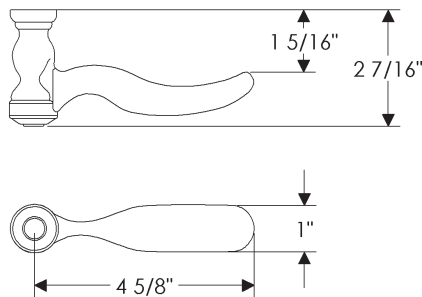
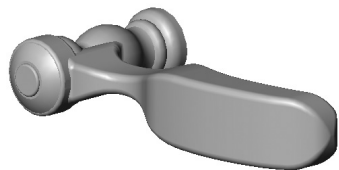
**L126 Triple Twist Lever**



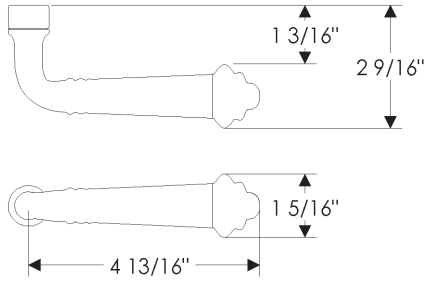
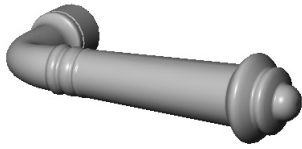
**L127 Scroll Lever**



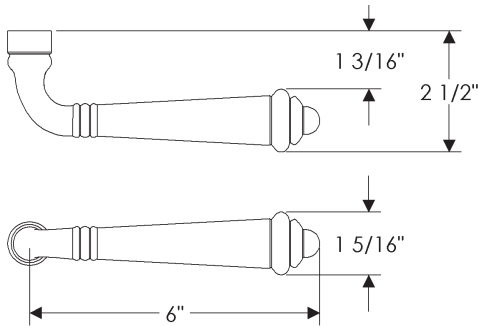
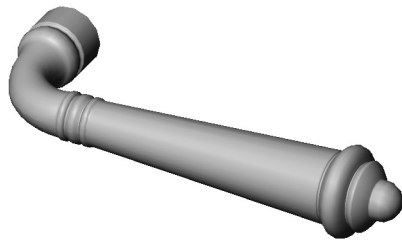
**L128 Small Classic Lever**  
Also available:  
L110 Classic Lever



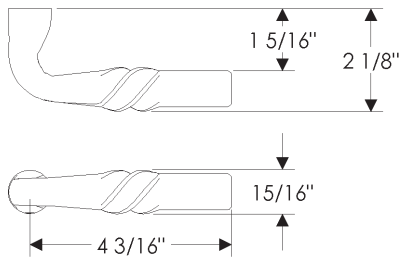
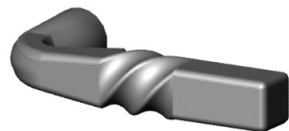
**L129 Trundle Lever**



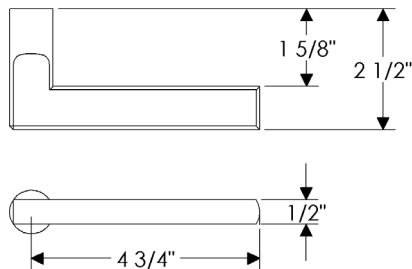
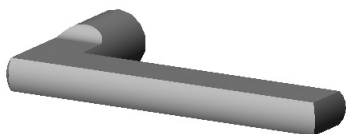
**L130 Monarch Lever**  
Also available:  
L131 Large Monarch Lever



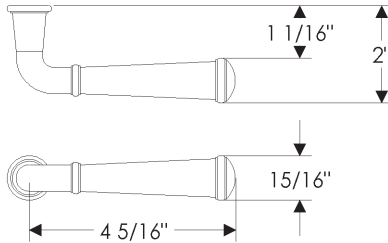
**L131 Large Monarch Lever**  
Also available:  
L130 Monarch Lever



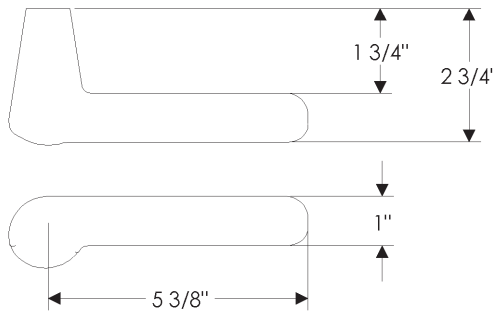
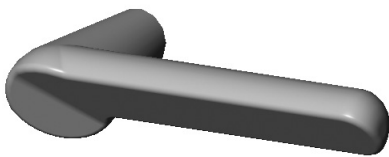
**L132 Square Twist Lever**



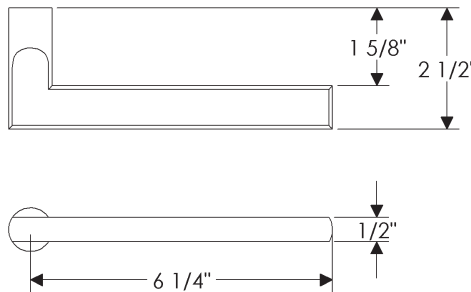
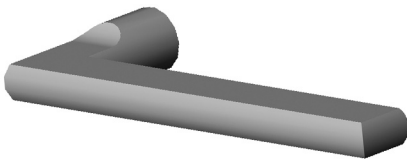
**L135 Olympus Lever**  
Also available:  
L147 Large Olympus Lever



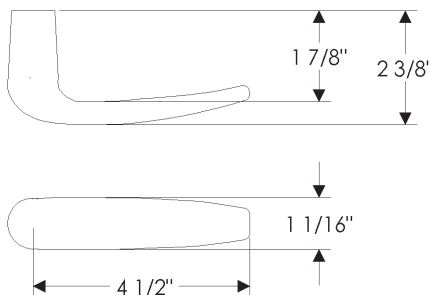
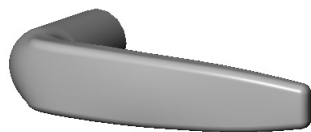
**L140** Harrington Lever  
Also available:  
L151 Large Harrington Lever



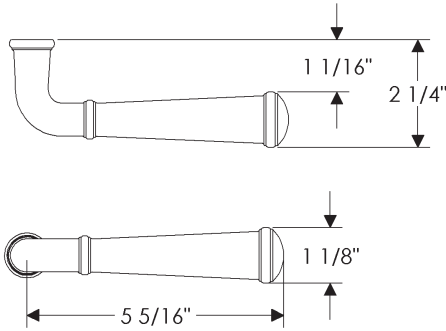
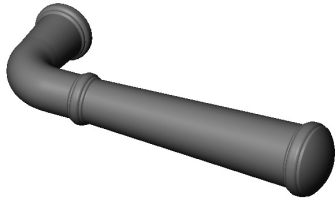
**L141** Large Rock Creek Lever  
Also available:  
L121 Rock Creek Lever



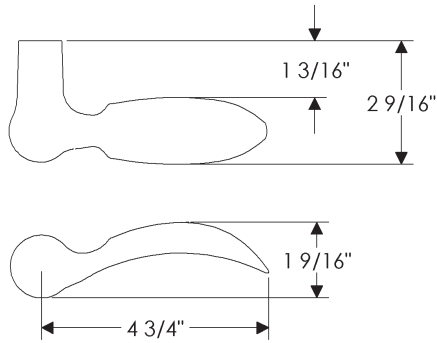
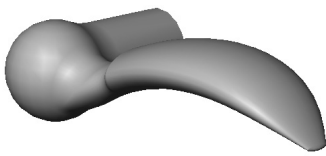
**L147** Large Olympus Lever  
Also available:  
L135 Olympus Lever



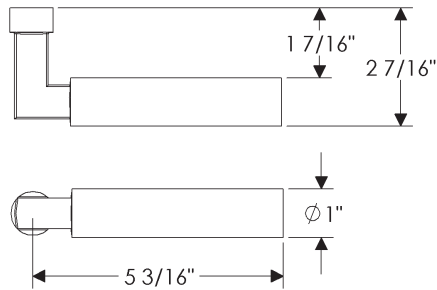
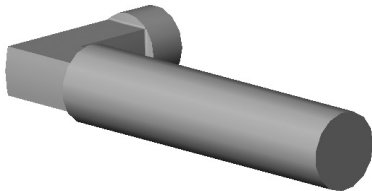
**L150** Bella Lever



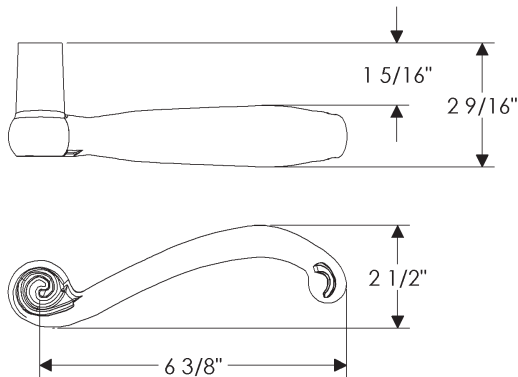
**L151 Large Harrington Lever**  
Also available:  
L140 Harrington Lever



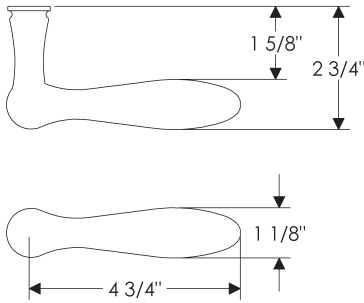
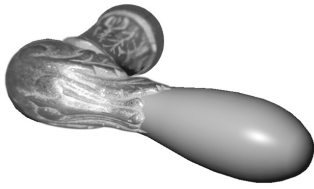
**L152 Osprey Lever**



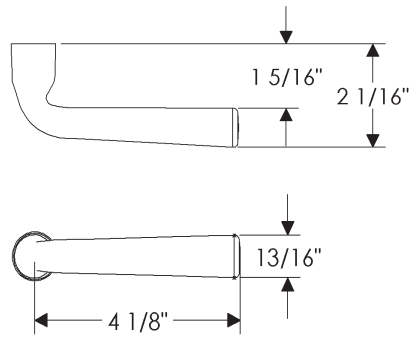
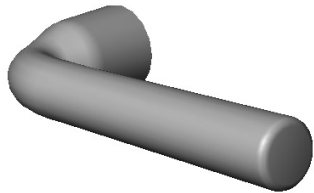
**L154 Stalk Lever**



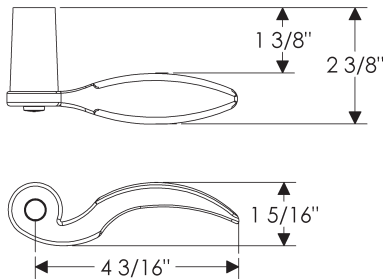
**L156 Large Classic Scroll Lever**  
Also available:  
L125 Classic Scroll Lever



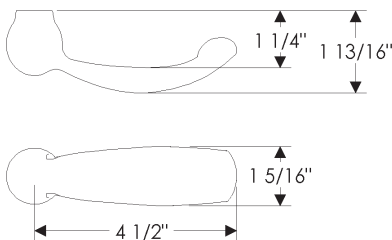
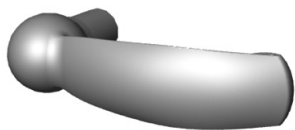
**L158 Large Acanthus Lever**  
Also available:  
L115 Acanthus Lever



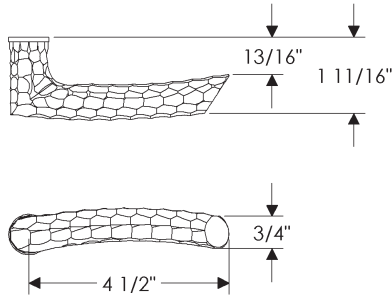
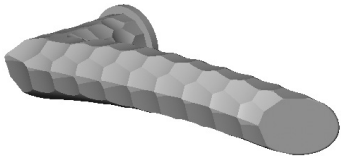
**L159 Baton Lever**



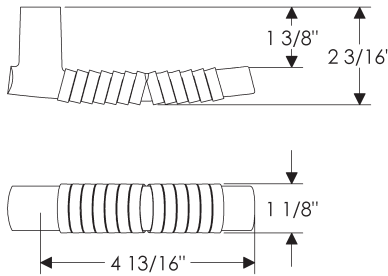
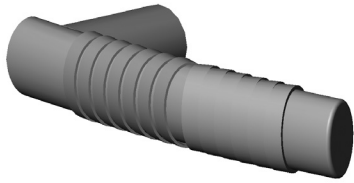
**L160 Wing Lever**



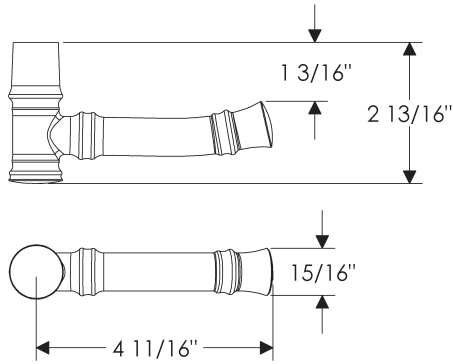
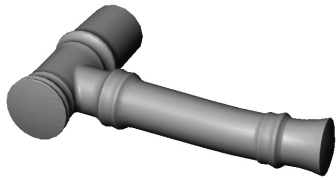
**L163 Euro Lever**



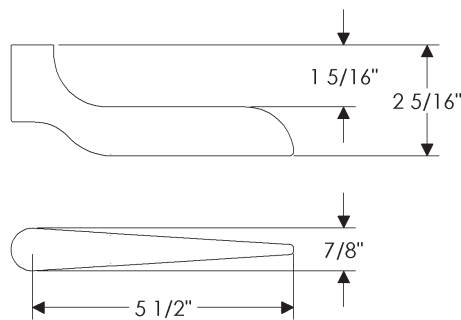
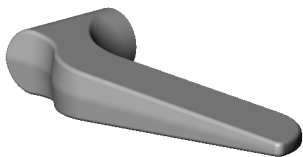
**L164 Chiseled Lever**  
Roger Thomas Collection



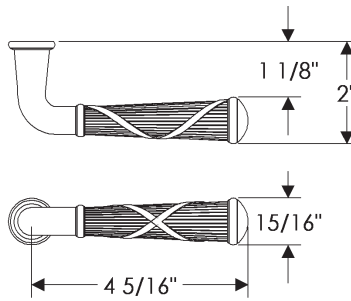
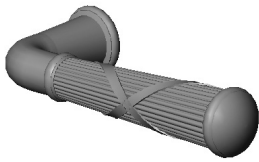
**L174 Lariat Lever**



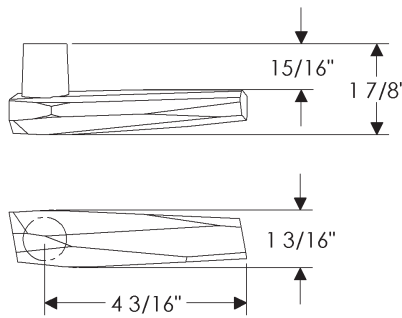
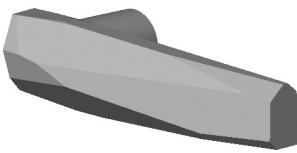
**L175 Bamboo Lever**



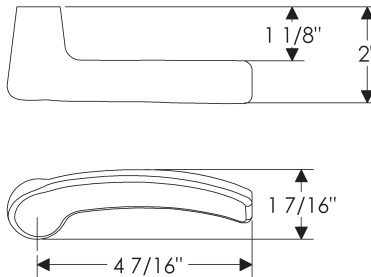
**L178 Bliss Lever**



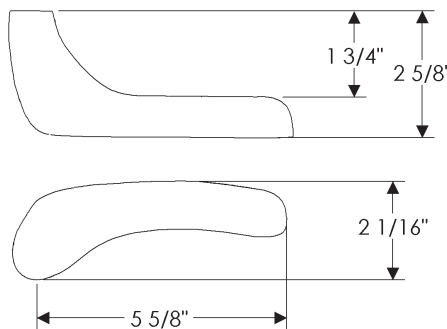
**L182** Ribbon & Reed Lever



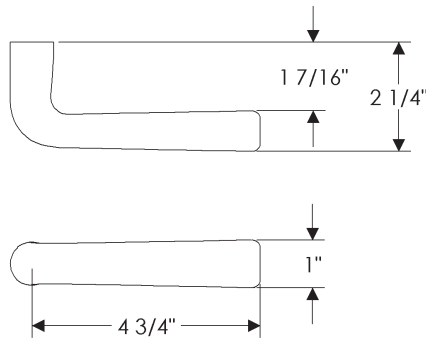
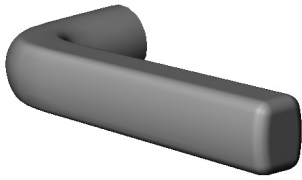
**L185** Ore Lever



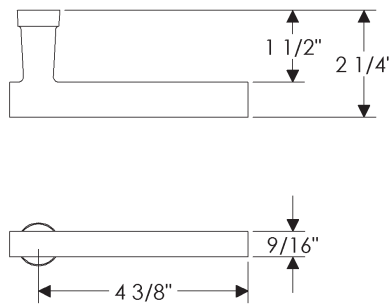
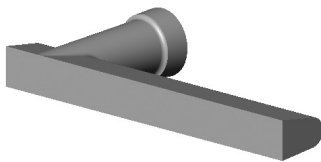
**L224** Ridge Lever



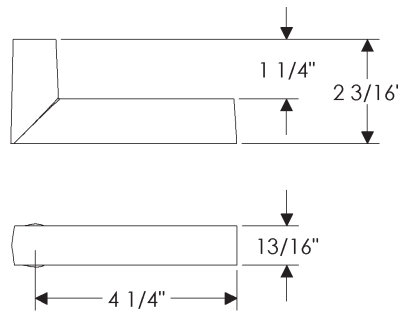
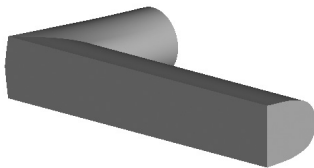
**L228** Large Ridge Lever  
• Note design style different from L224



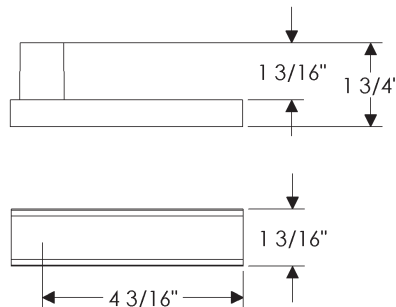
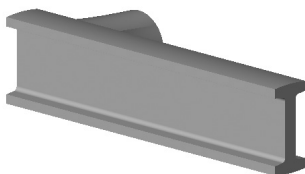
**L241 Large French Lever**  
 Also available:  
 L117 French Lever  
 L120 Long French Lever



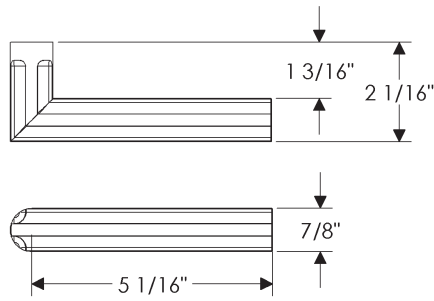
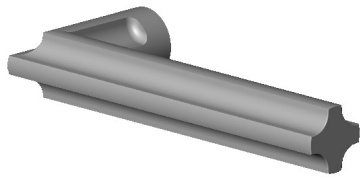
**L260 Trolley Lever**



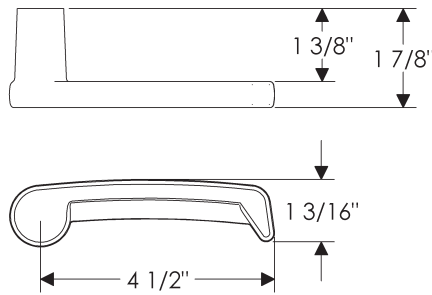
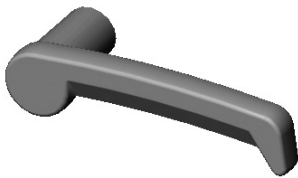
**L261 Rail Lever**



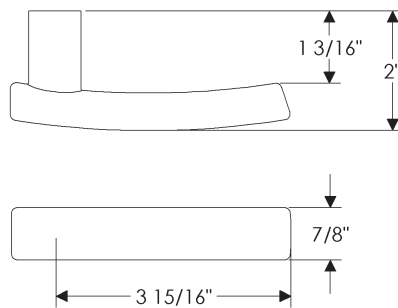
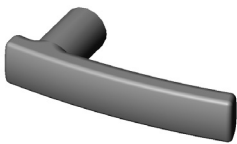
**L265 I Beam Lever**



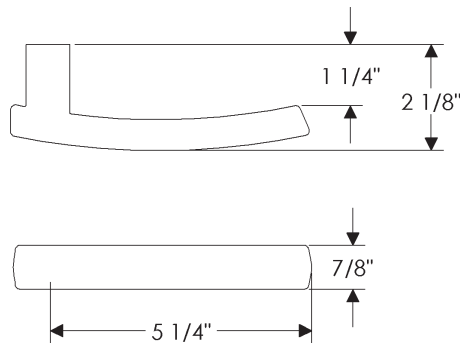
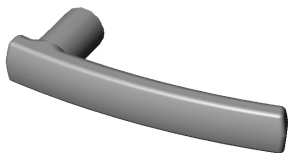
**L267 Cross Lever**



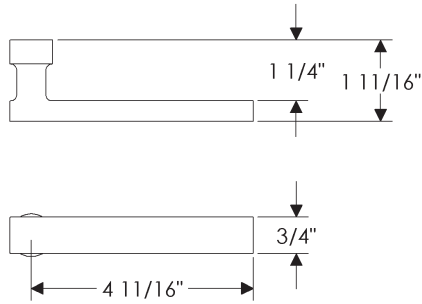
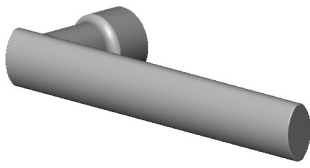
**L276 Falcon Lever**



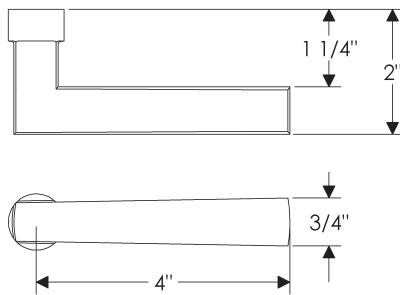
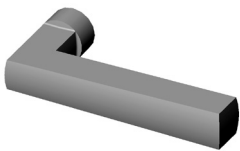
**L301 Strap Lever**  
Also available:  
L302 Large Strap Lever



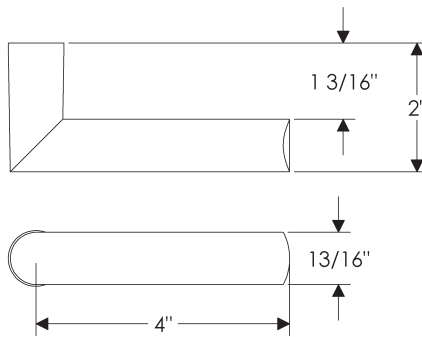
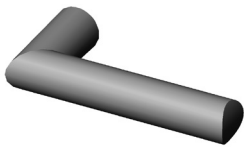
**L302 Large Strap Lever**  
Also available:  
L301 Strap Lever



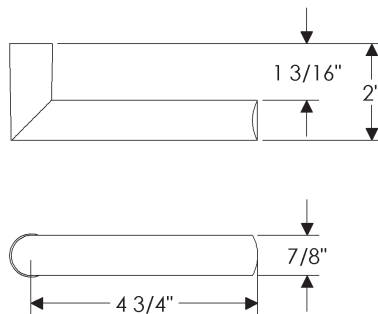
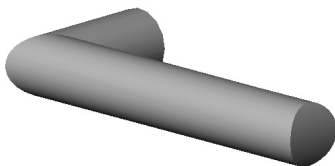
**L303** Boiler Lever



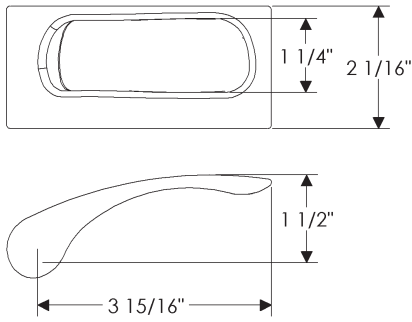
**L304** Reed Lever



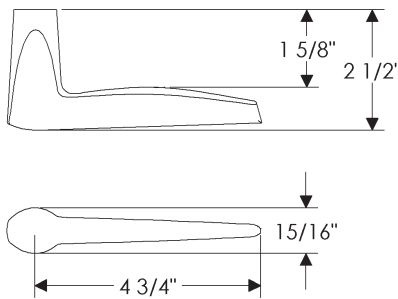
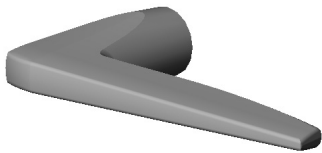
**L307** Jane Lever  
Also available:  
L308 Long Jane Lever



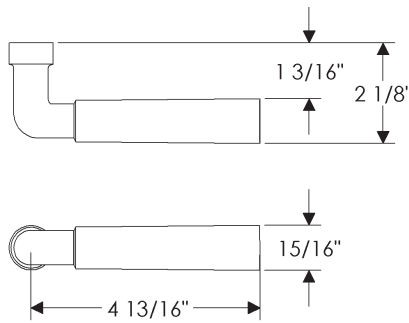
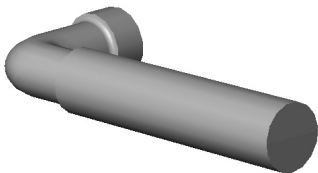
**L308** Long Jane Lever  
Also available:  
L307 Jane Lever



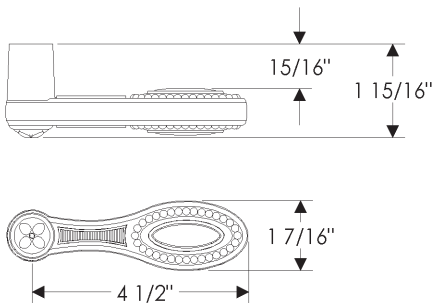
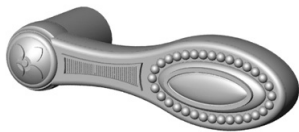
**L310 Pool Lever**



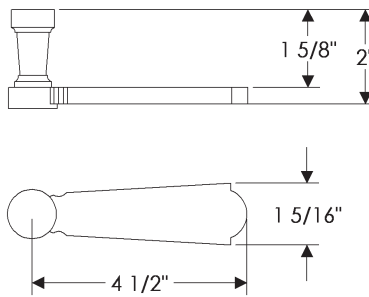
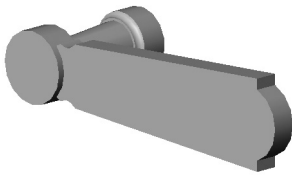
**L311 Blade Lever**



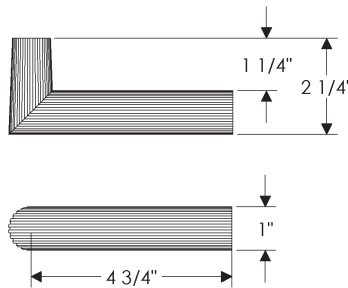
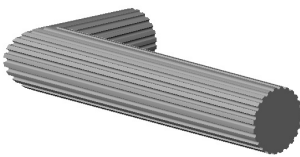
**L330 Coupler Lever**



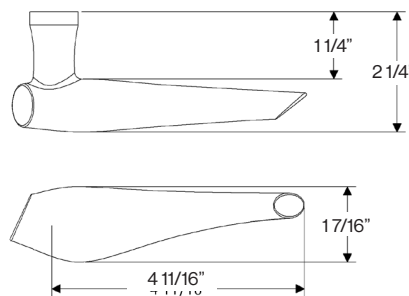
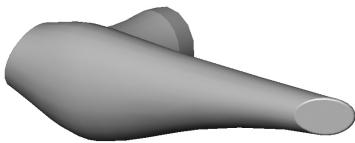
**L580 Maddox Lever**



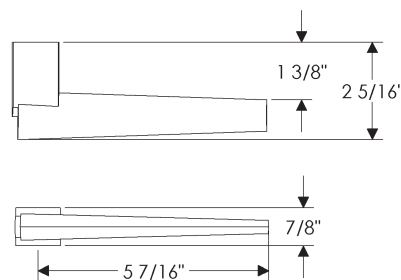
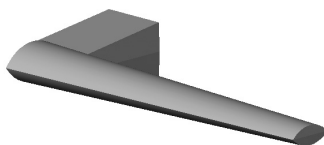
**L10010** Paris Lever  
*Roger Thomas Collection*



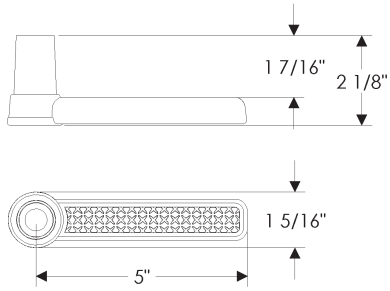
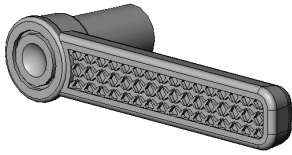
**L10015** Flute Lever  
*Roger Thomas Collection*



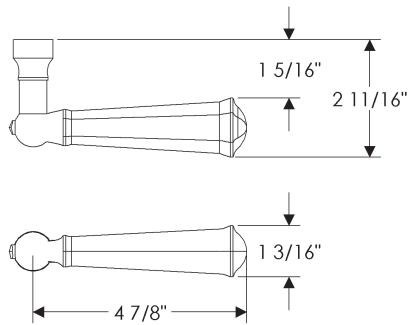
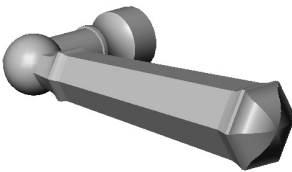
**L10302** Raleigh Lever



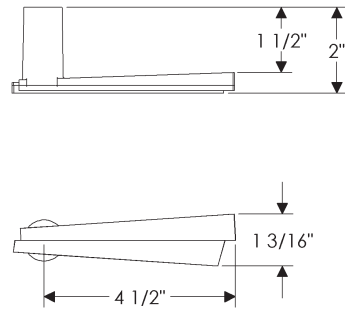
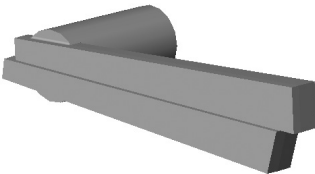
**L10501** Verdura Lever  
(only available with Verdura line)  
• Not to be used with privacy spring latch sets.



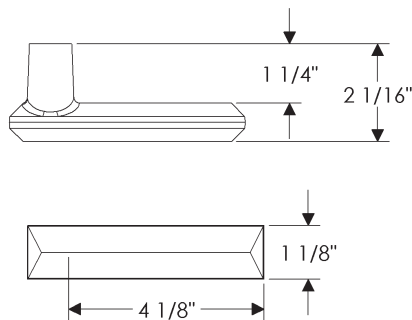
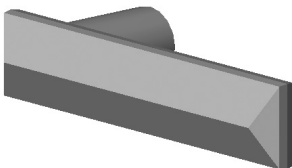
**L10801** Briggs Lever



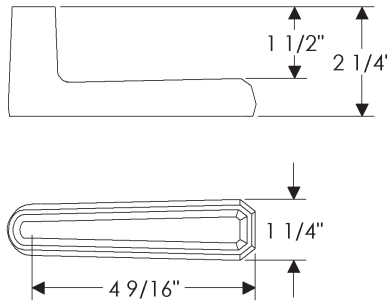
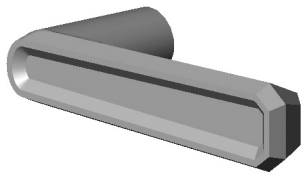
**L10802** Kettle Lever



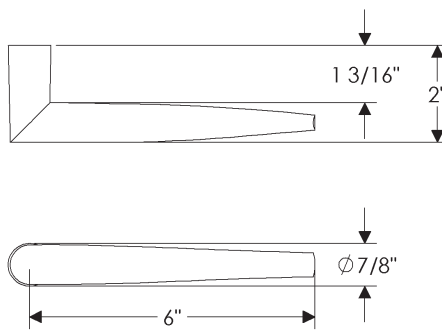
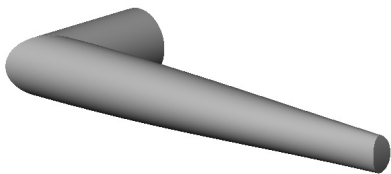
**L20230** Shift Lever  
*Ted Boerner Collection*



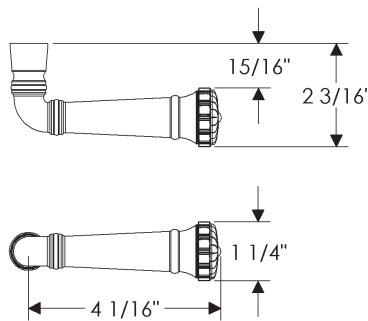
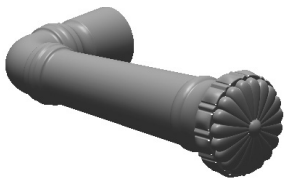
**L21005** Emile Lever



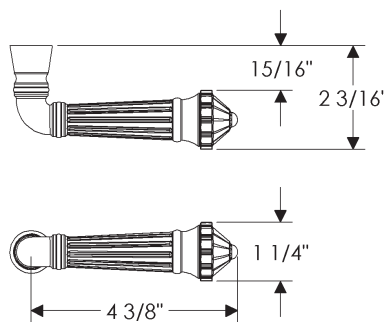
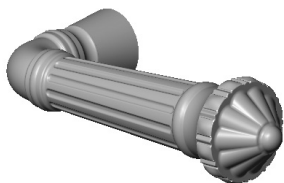
**L30140** Smith Lever  
 • Hammered texture



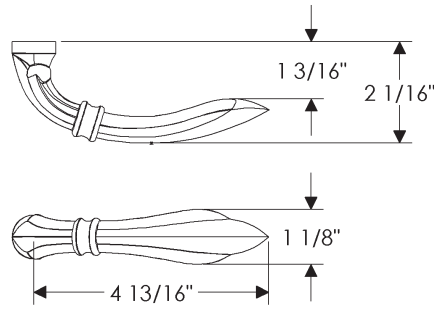
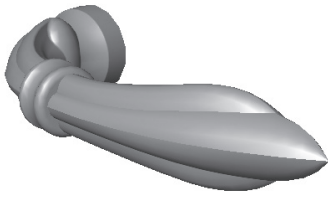
**L30142** Whittle Lever  
 • Hammered texture



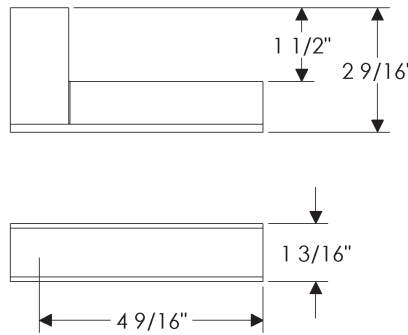
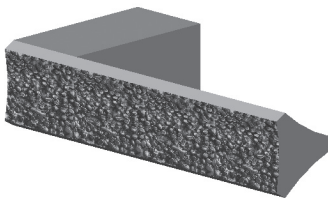
**L30160** Crown Lever



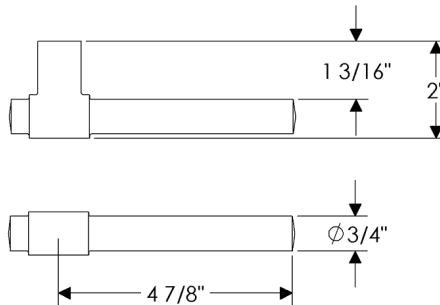
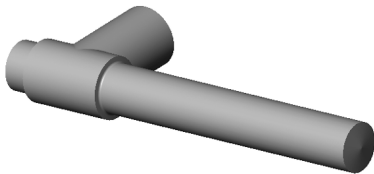
**L30161** Capitol Lever



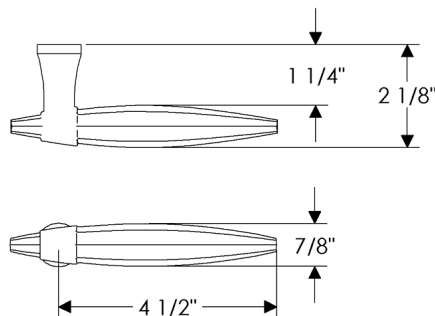
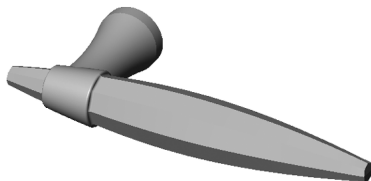
**L30180** Chateau Lever



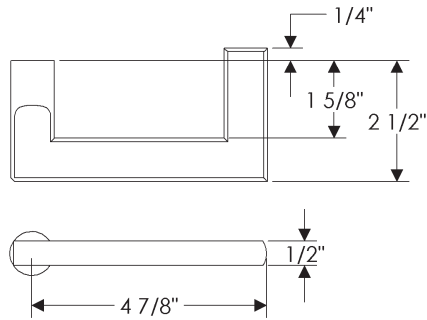
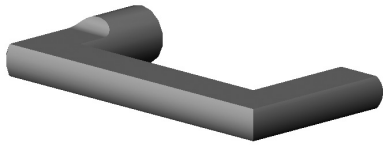
**L30301** Trousdale Lever  
*Kravitz Design Collection*  
 • Not to be used with privacy spring latch sets.



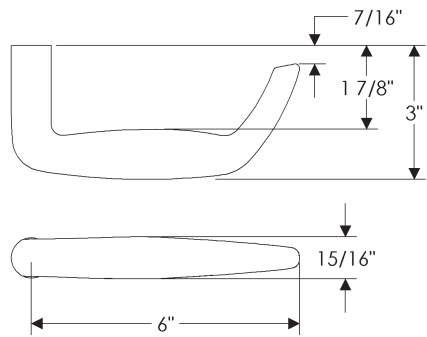
**L10025** Barre Lever  
*Roger Thomas Collection*



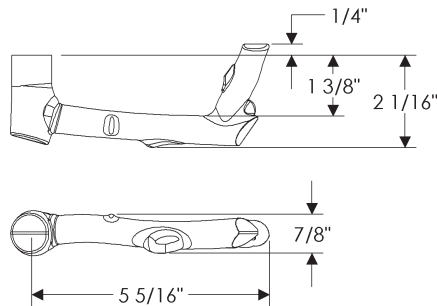
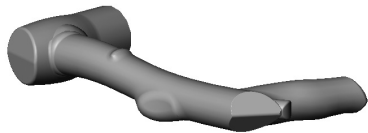
**L10028** Zeppelin Lever  
*Roger Thomas Collection*



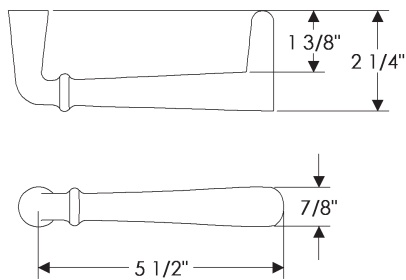
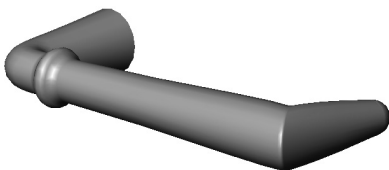
**L137** Olympus Return Lever



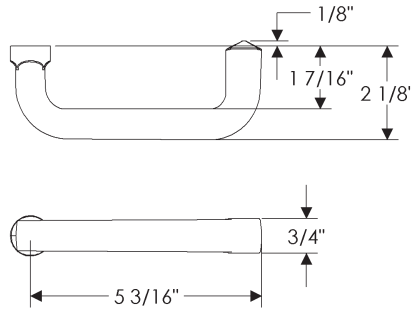
**L153** Talon Return Lever



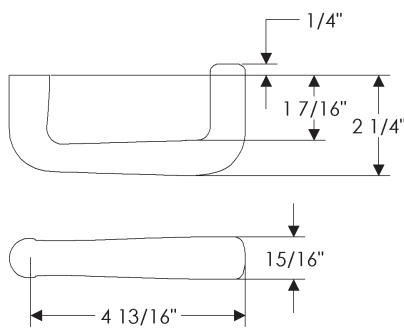
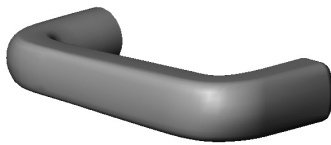
**L179** Twig Return Lever



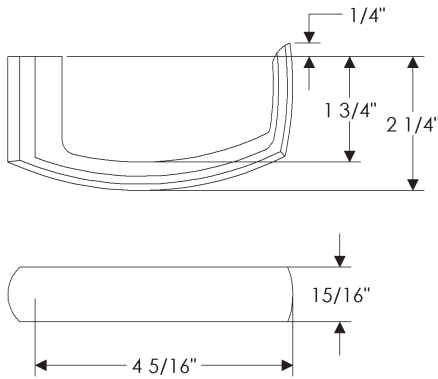
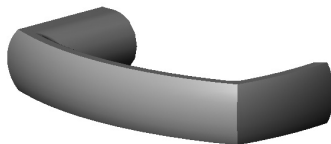
**L216** Old World Return Lever



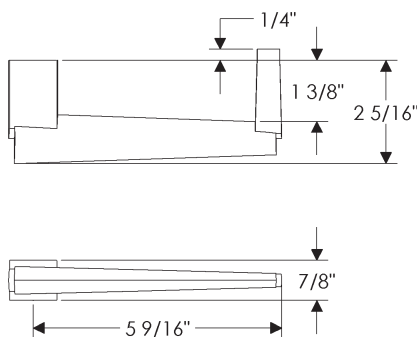
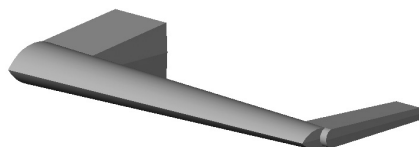
**L219** Long Legacy Return Lever



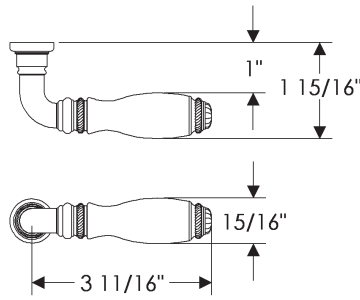
**L245** French Return Lever



**L314** UJ Return Lever

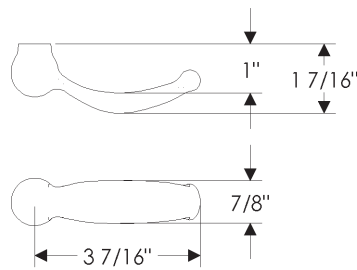
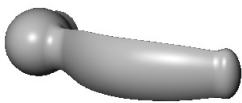


**L10502** Verdura Return Lever  
(only available with Verdura line)  
• Not to be used with privacy spring latch sets.



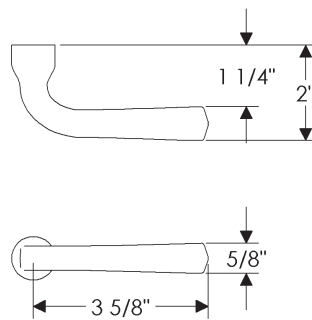
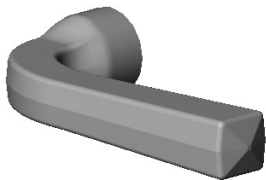
**LW05 Mini Ellis Lever**

- Designed for WN window trim sets



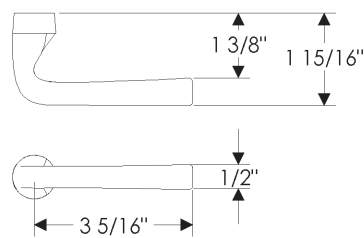
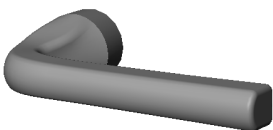
**LW10 Mini Euro Lever**

- Designed for WN window trim sets



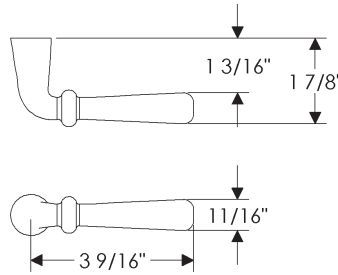
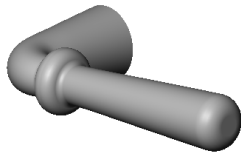
**LW15 Mini Legacy Lever**

- Designed for WN window trim sets



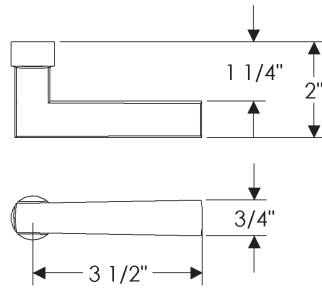
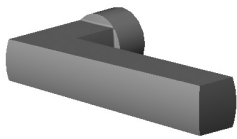
**LW20 Mini French Lever**

- Designed for WN window trim sets



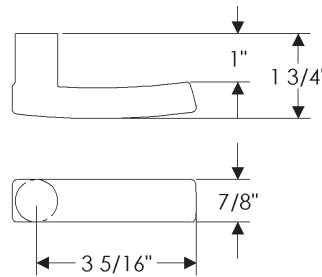
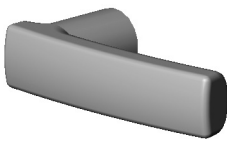
**LW23** Mini Old World Lever

- Designed for WN window trim sets



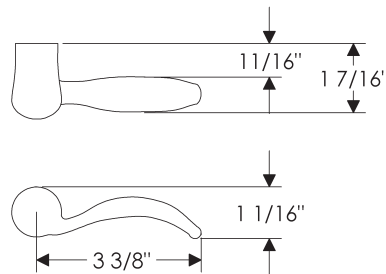
**LW33** Mini Reed Lever

- Designed for WN window trim sets



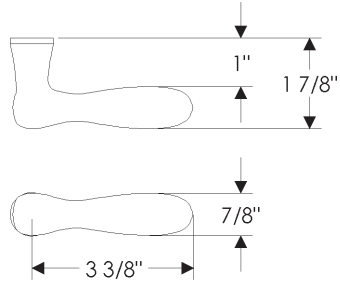
**LW37** Mini Strap Lever

- Designed for WN window trim sets



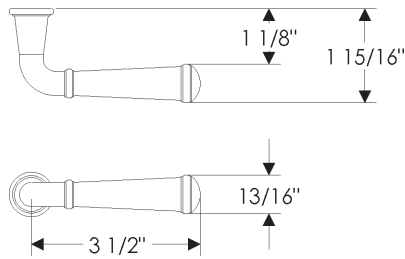
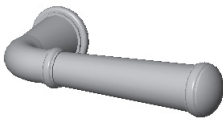
**LW40** Mini Classic Lever

- Designed for WN window trim sets



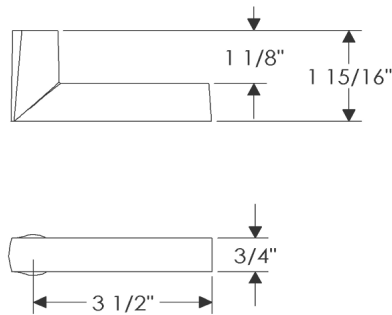
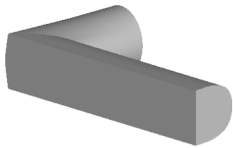
**LW50** Mini Acanthus Lever

- Designed for WN window trim sets



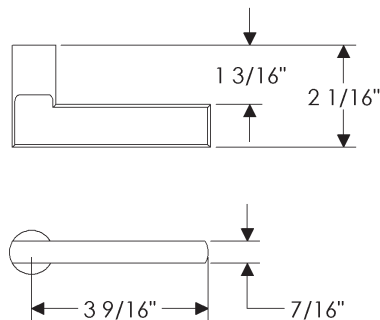
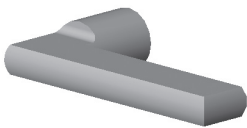
**LW60** Mini Harrington Lever

- Designed for WN window trim sets



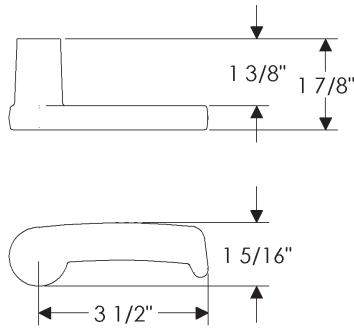
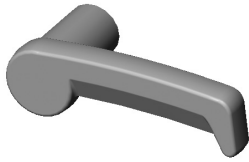
**LW61** Mini Rail Lever

- Designed for WN window trim sets



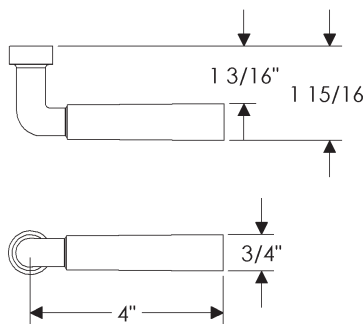
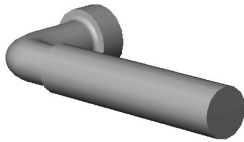
**LW63** Mini Olympus Lever

- Designed for WN window trim sets



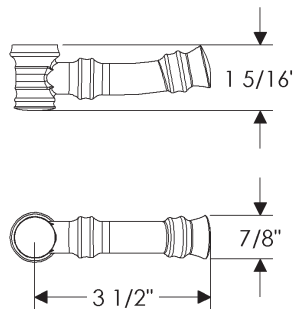
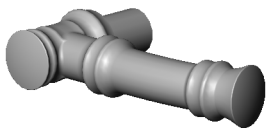
**LW65 Mini Falcon Lever**

- Designed for WN window trim sets



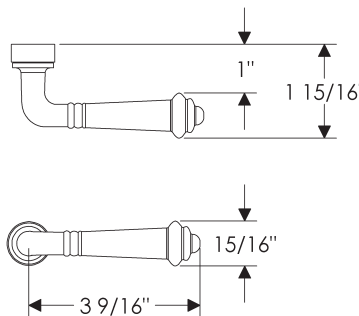
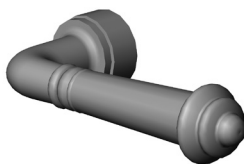
**LW71 Mini Coupler Lever**

- Designed for WN window trim sets



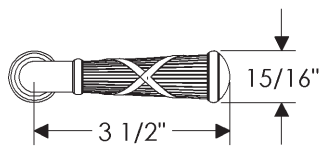
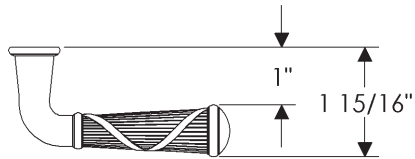
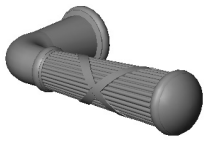
**LW75 Mini Bamboo Lever**

- Designed for WN window trim sets

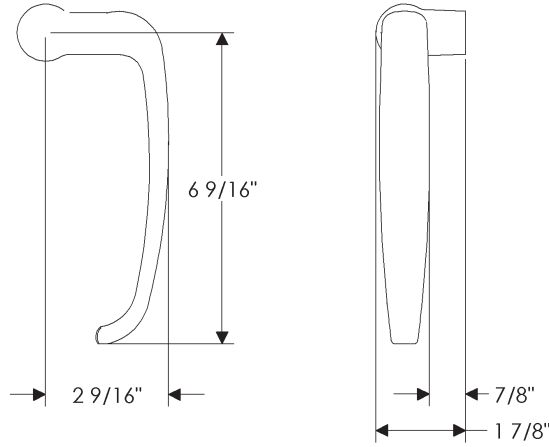


**LW80 Mini Monarch Lever**

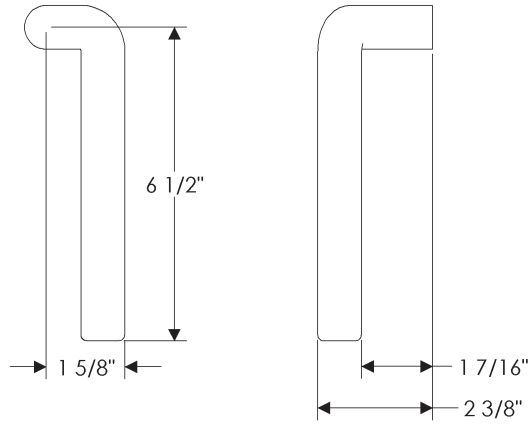
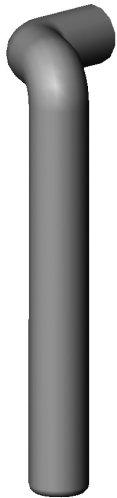
- Designed for WN window trim sets

**LW85 Mini Ribbon & Reed Lever**

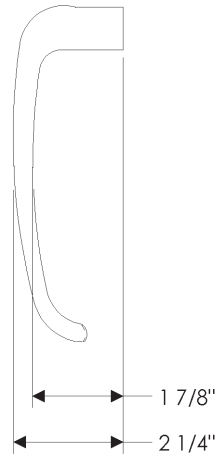
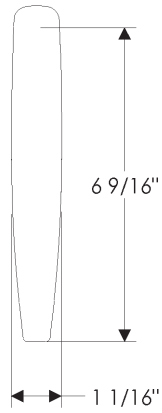
- Designed for WN window trim sets



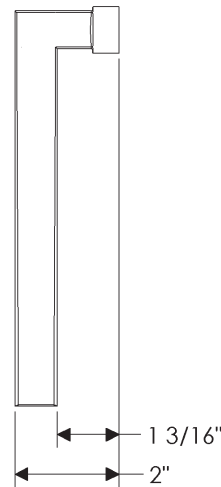
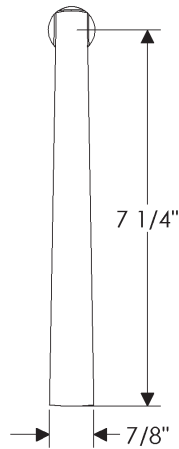
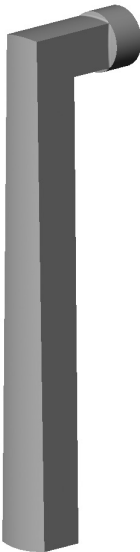
L124 Offset Lever



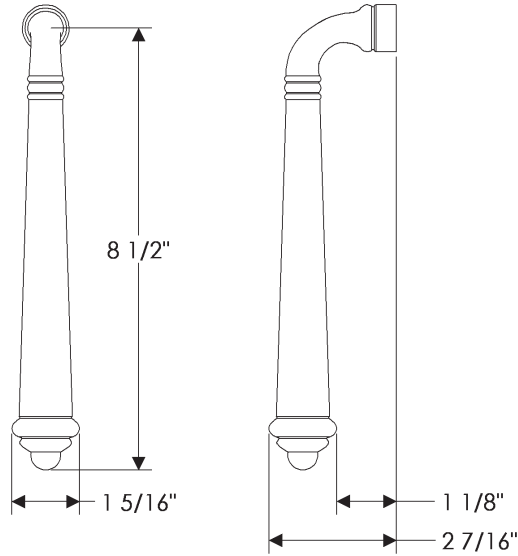
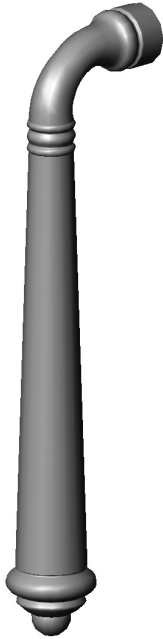
L177 Offset Tube Lever



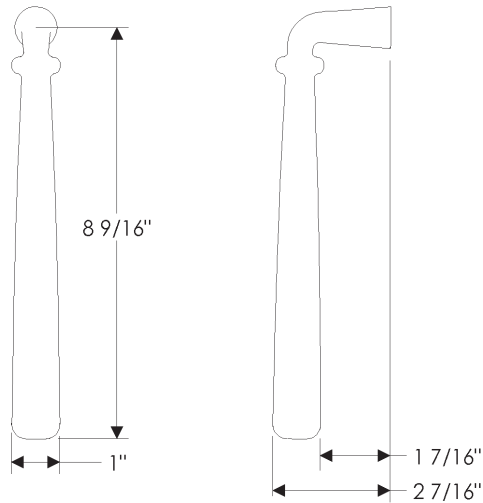
**L114** Long Hook Lever



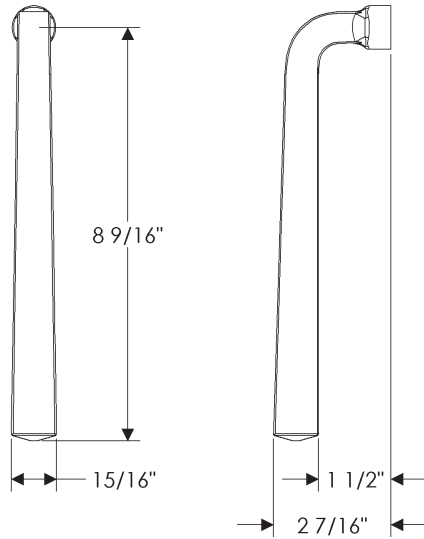
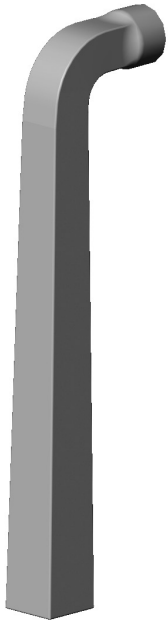
**L134** Long Reed Lever



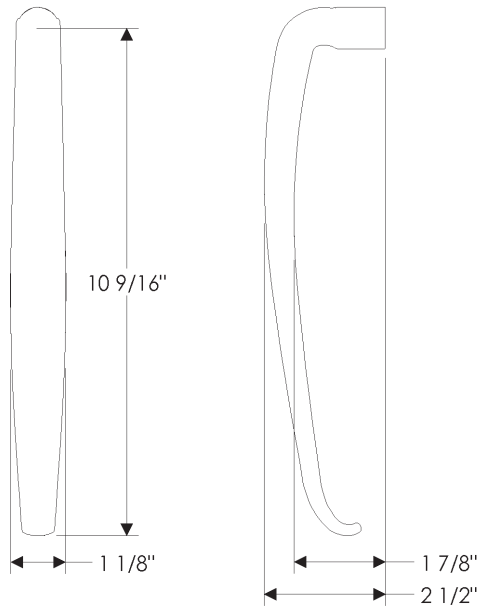
**L138** Long Monarch Lever



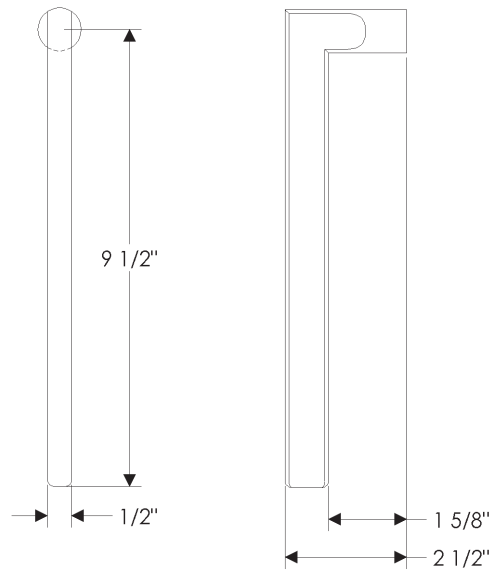
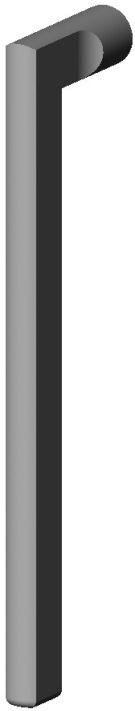
**L139** Long Old World Lever



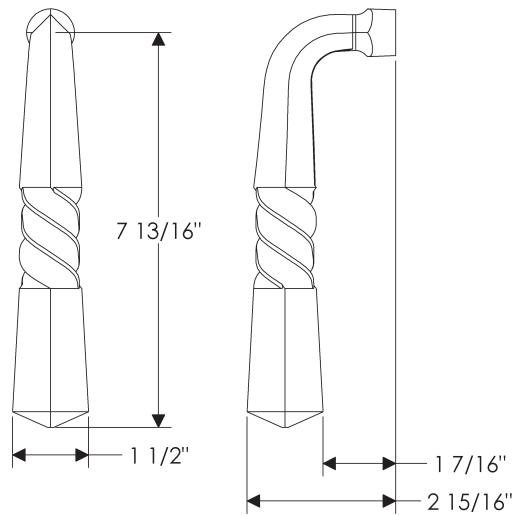
**L142** Long Legacy Lever



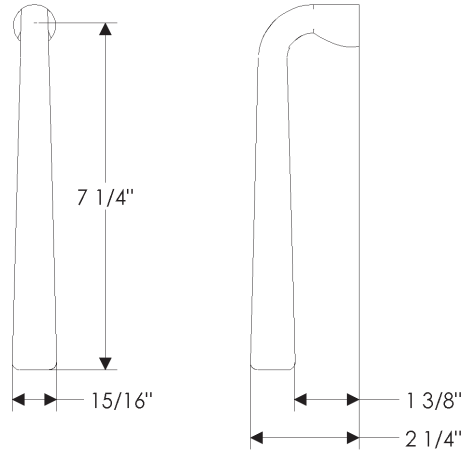
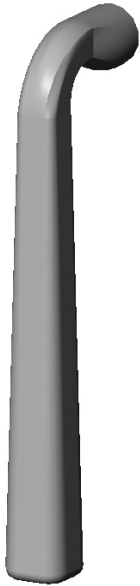
**L144** Extra Long Hook Lever



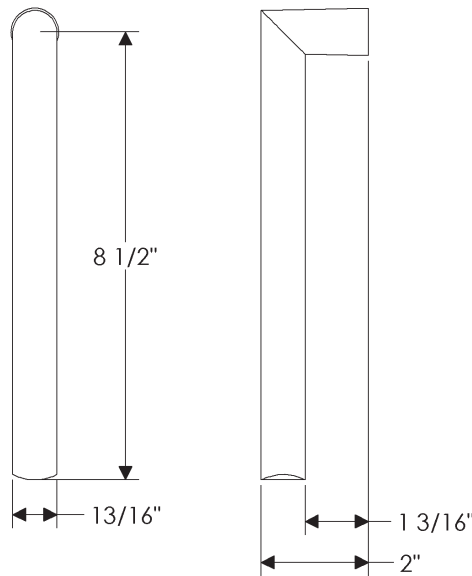
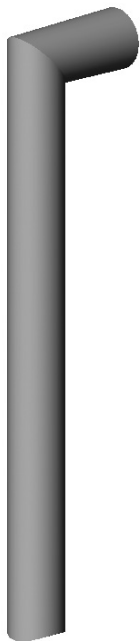
**L145** Long Olympus Lever



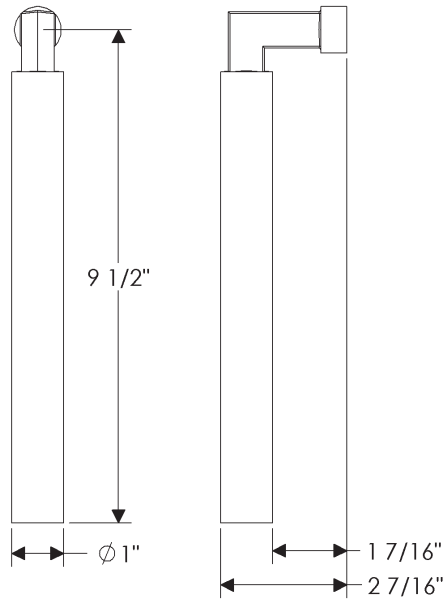
**L146** Long Triple Twist Lever



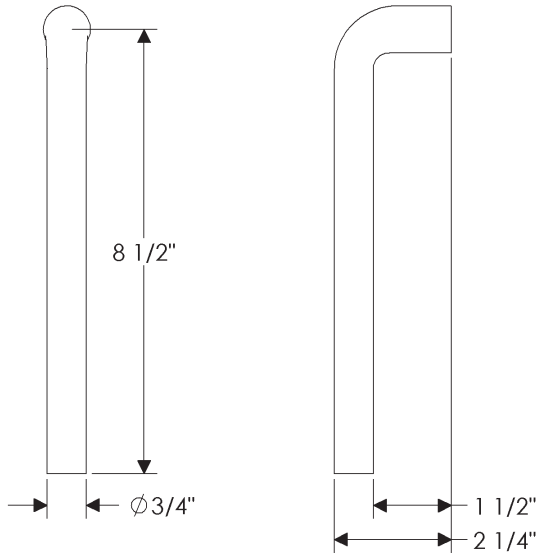
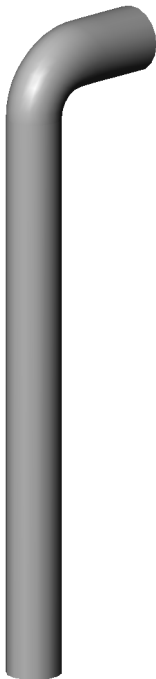
**L148** Long French Lever



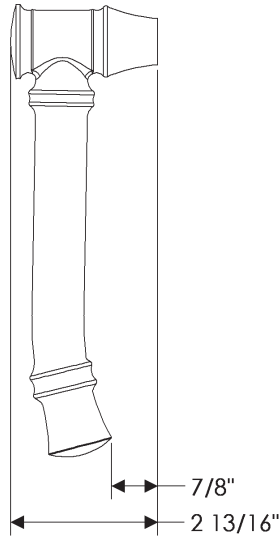
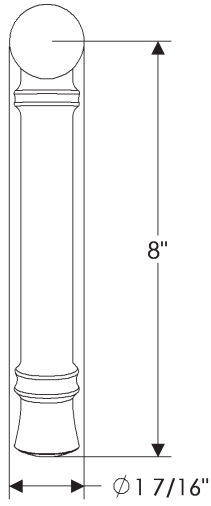
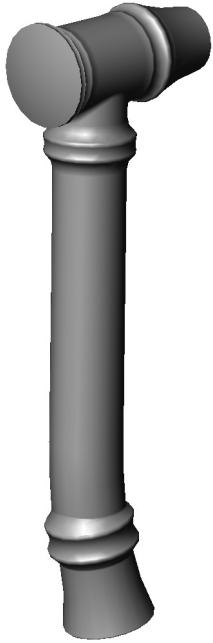
**L149** Long Jane Lever



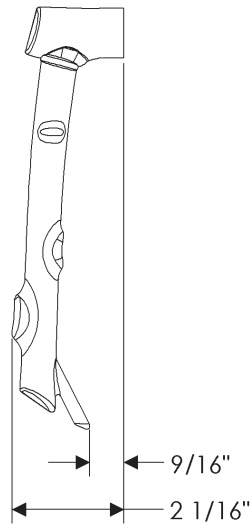
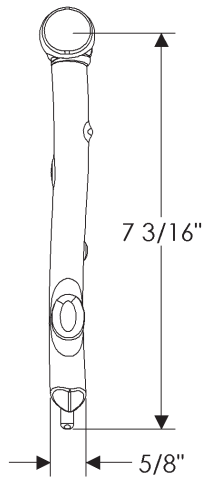
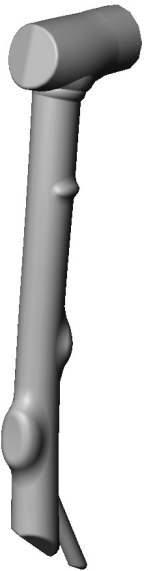
L157 Long Stalk Lever



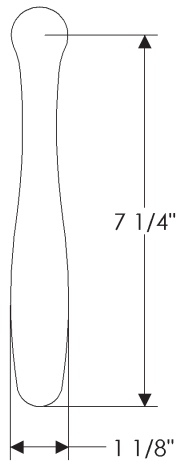
L162 Long Tube Lever



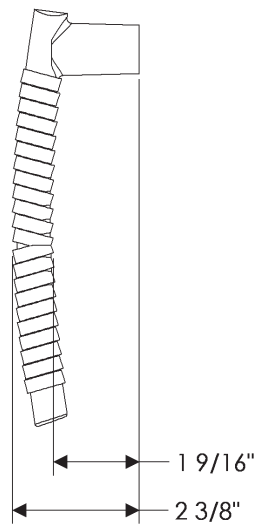
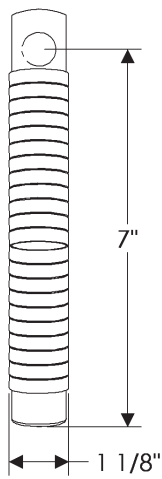
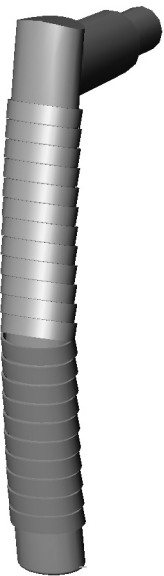
L167 Long Bamboo Lever



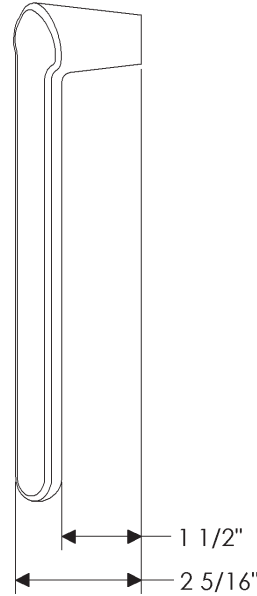
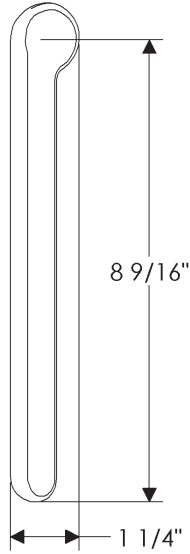
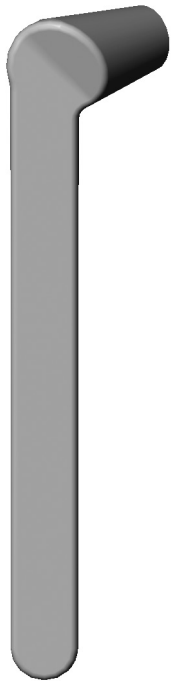
L168 Long Twig Lever



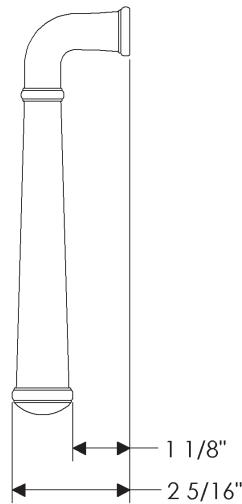
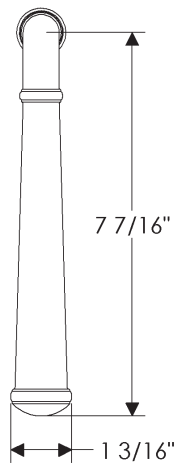
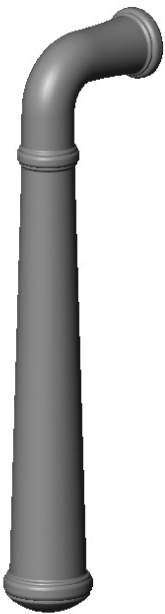
**L172** Long Acanthus Lever



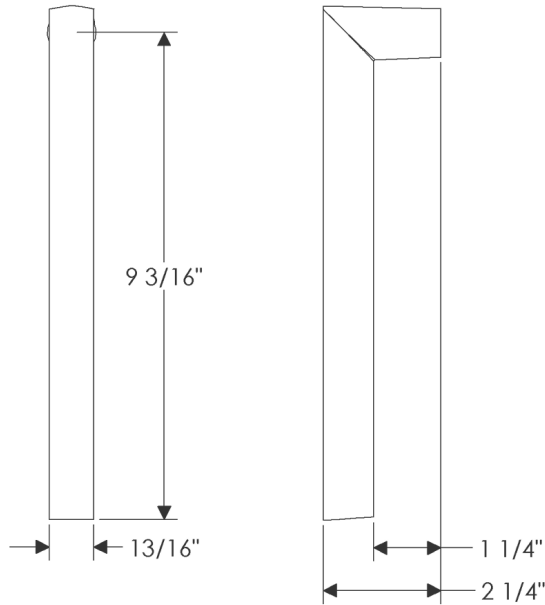
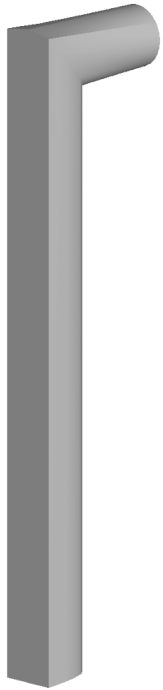
**L173** Long Lariat Lever



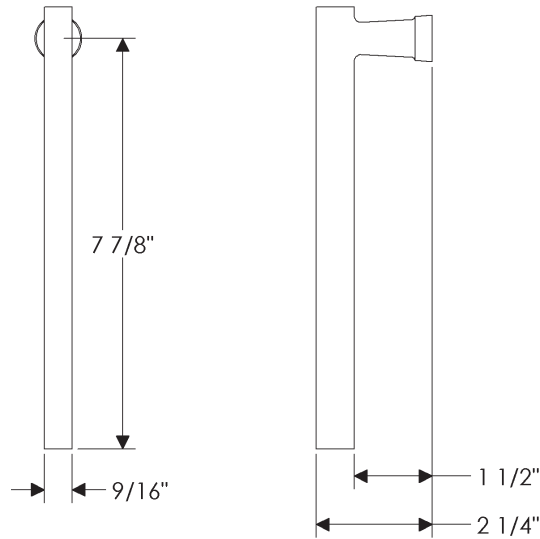
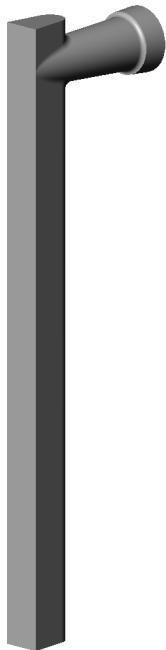
**L176** Long Rock Creek Lever



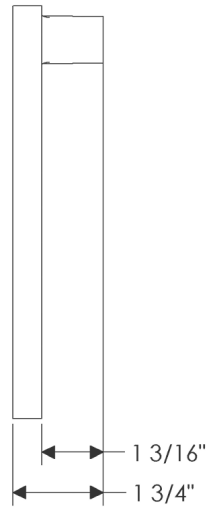
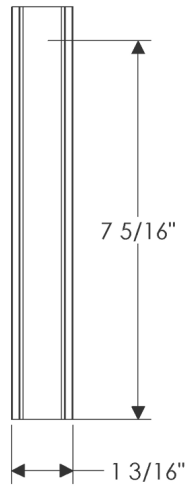
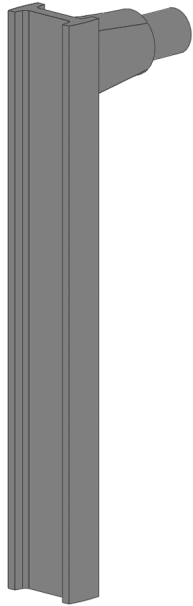
**L180** Long Harrington Lever



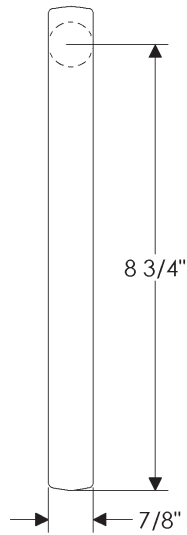
**L263** Long Rail Lever



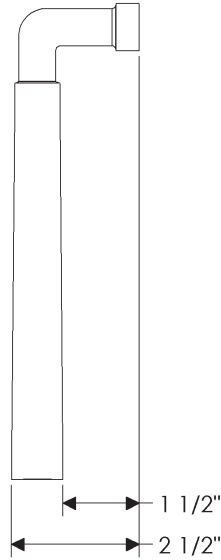
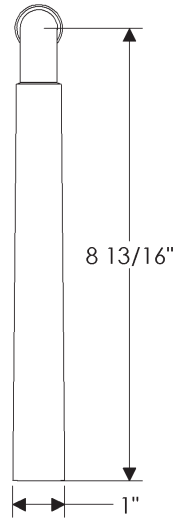
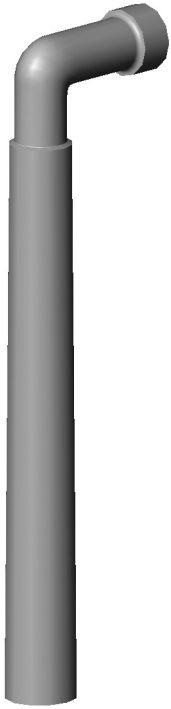
**L264** Long Trolley Lever



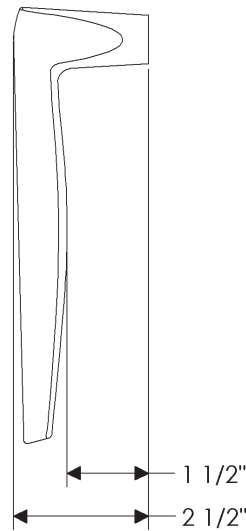
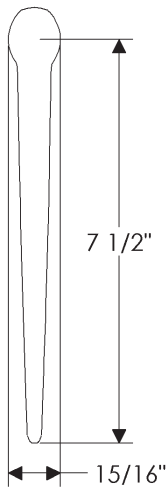
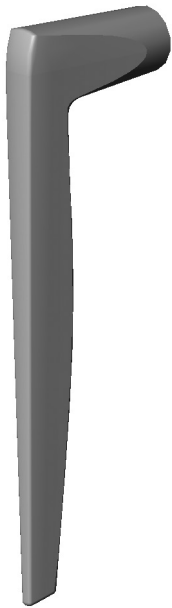
**L266** Long I Beam Lever



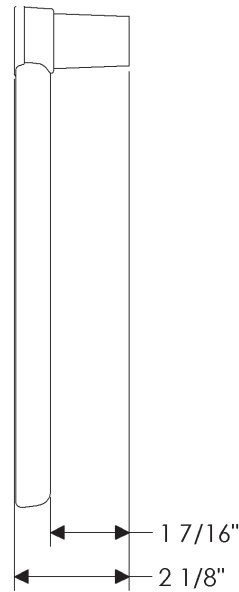
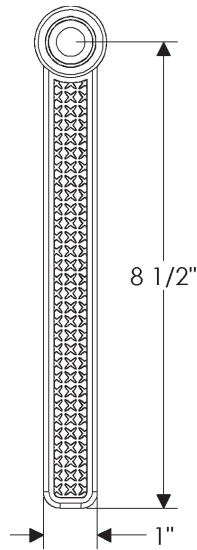
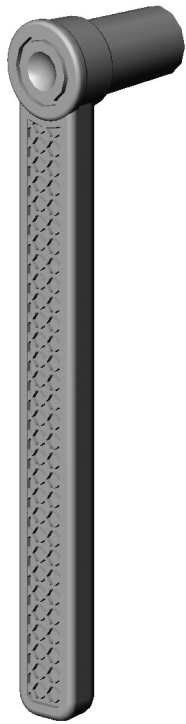
**L305** Long Strap Lever



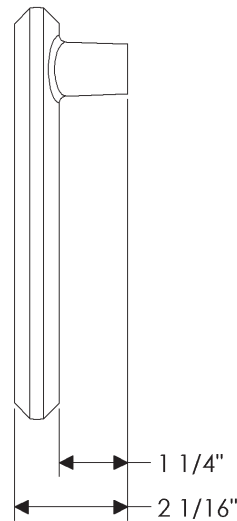
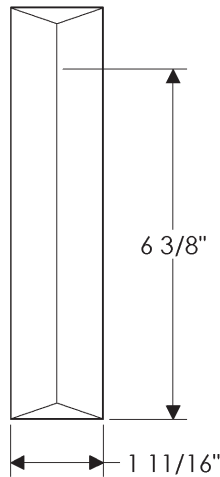
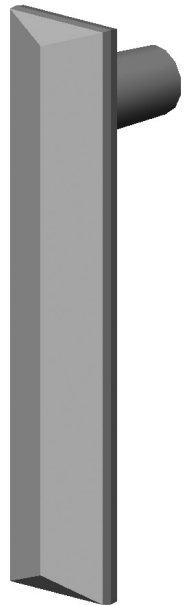
**L331** Long Coupler Lever



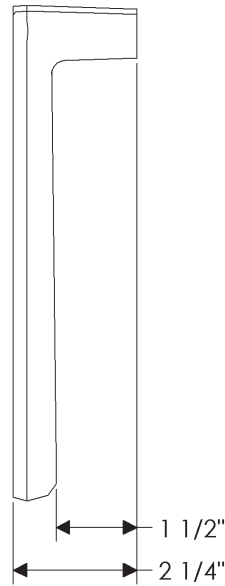
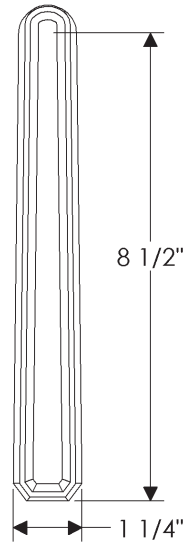
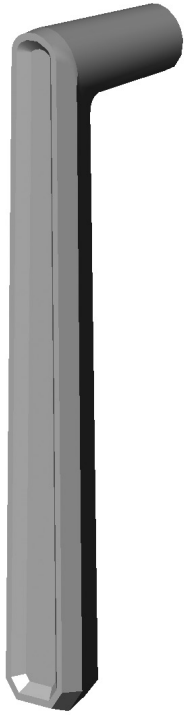
**L332** Long Blade Lever



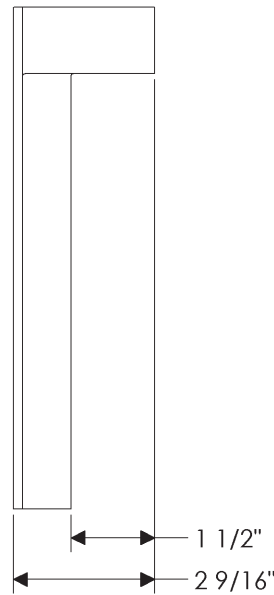
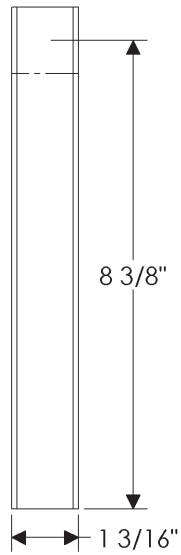
**L10804** Long Briggs Lever



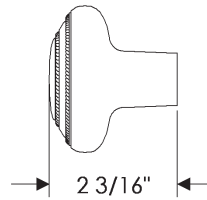
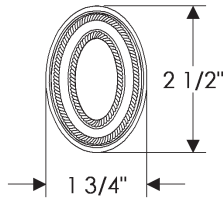
**L21075** Long Emile Lever



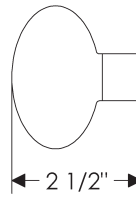
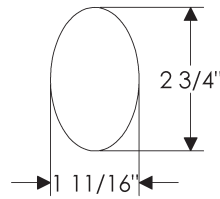
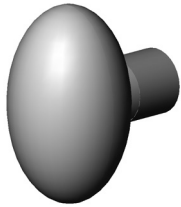
**L30145** Long Smith Lever



**L30303** Long Trousdale Lever

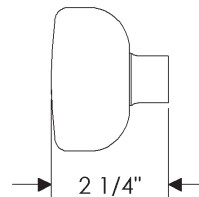
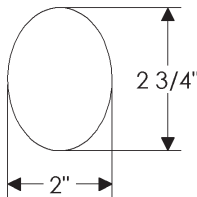
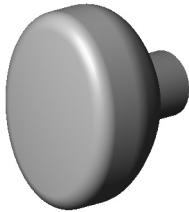


**K075 Ellis Knob**



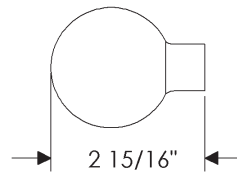
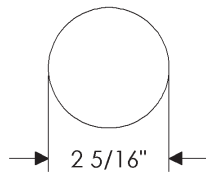
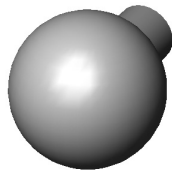
**K150 Oval Crystal Knob**

- Upcharge applies for glass knob with any style of escutcheon. Call for pricing.



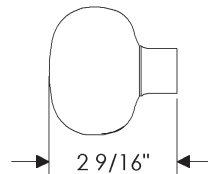
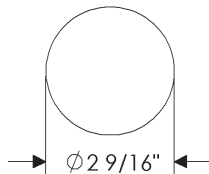
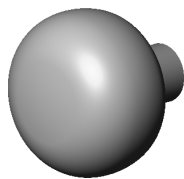
**K151 Oval Cast Glass Knob**

- Upcharge applies for glass knob with any style of escutcheon. Call for pricing.



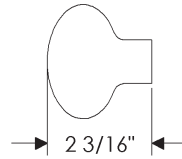
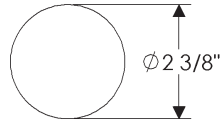
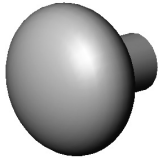
**K155 Round Crystal Knob**

- Upcharge applies for glass knob with any style of escutcheon. Call for pricing.

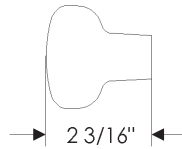


**K156 Round Cast Glass Knob**

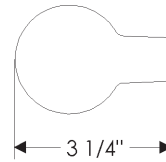
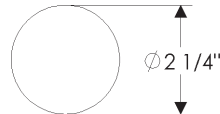
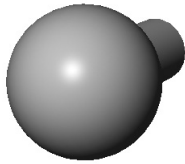
- Upcharge applies for glass knob with any style of escutcheon. Call for pricing.



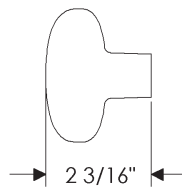
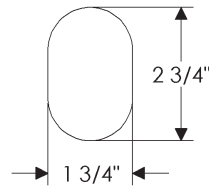
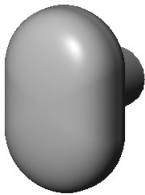
**K200** Plymouth Knob



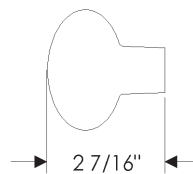
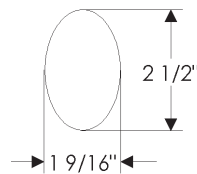
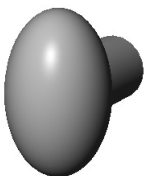
**K201** Mushroom Knob



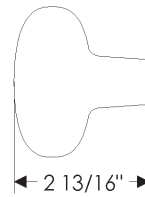
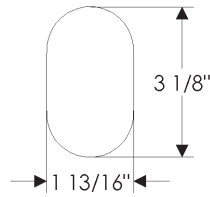
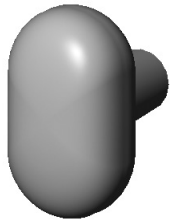
**K202** Hitch Knob



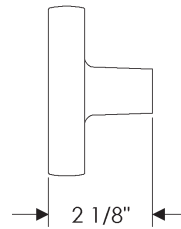
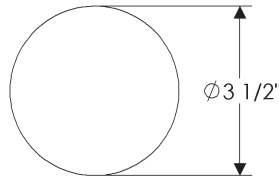
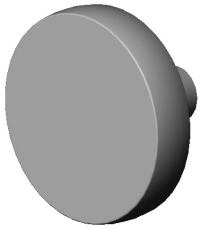
**K203** Potato Knob



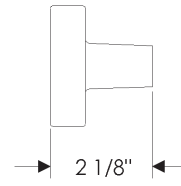
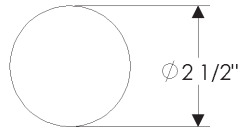
**K204** Egg Knob



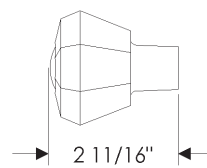
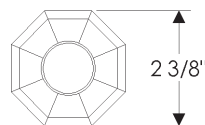
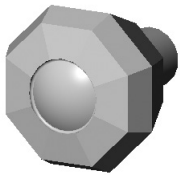
**K205 Baker Knob**



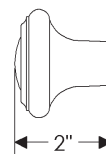
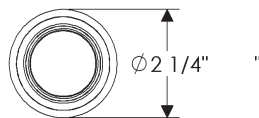
**K206 Large Luna Knob**



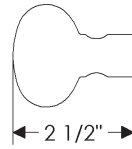
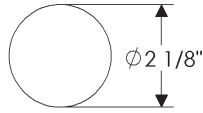
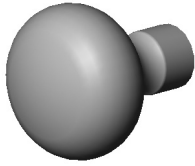
**K207 Luna Knob**



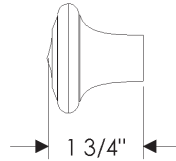
**K208 Gem Knob**



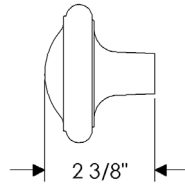
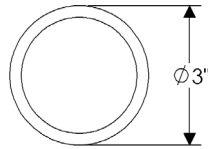
**K209 Cottage Knob**



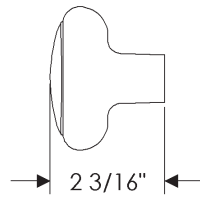
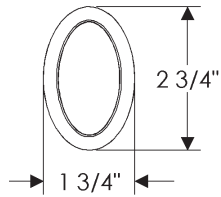
**K210** Prairie Knob



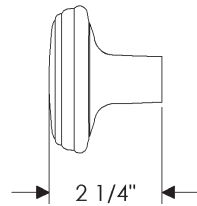
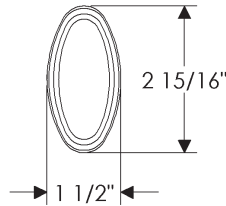
**K211** Mini Roswell Knob  
Also Available:  
K251 Roswell Knob



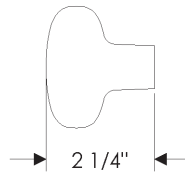
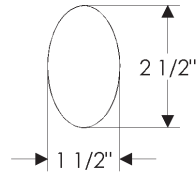
**K215** Friedman Knob



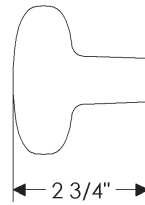
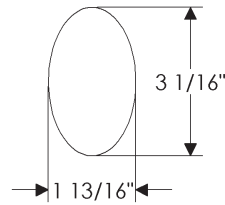
**K218** Elliptic Knob



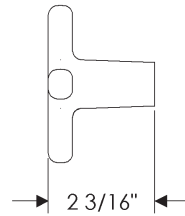
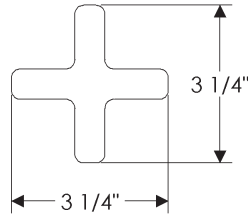
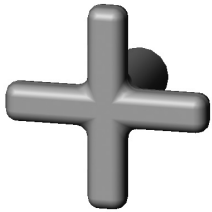
**K219** Carriage Knob



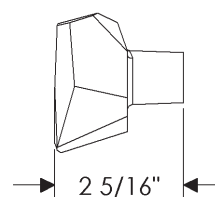
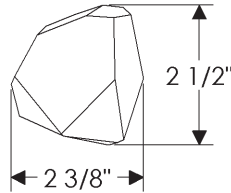
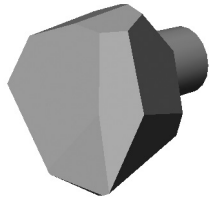
**K230 Acanthus Knob**  
Also Available:  
K233 Large Acanthus Knob



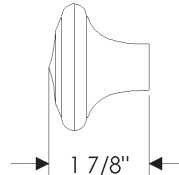
**K233 Large Acanthus Knob**  
Also Available:  
K230 Acanthus Knob



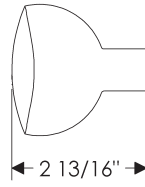
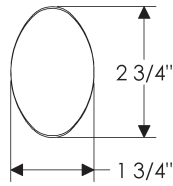
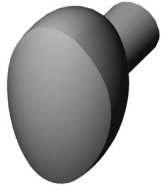
**K235 Cross Knob**



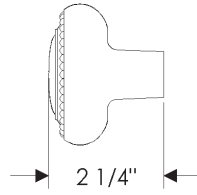
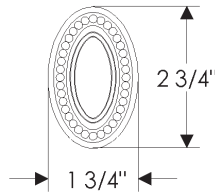
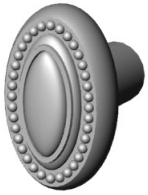
**K236 Ore Knob**



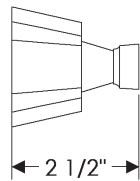
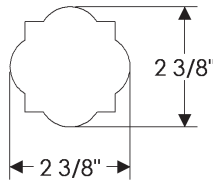
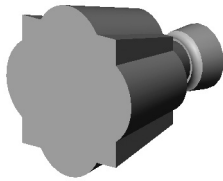
**K251 Roswell Knob**  
Also Available:  
K211 Mini Roswell Knob



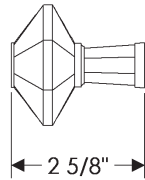
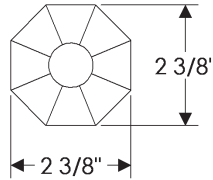
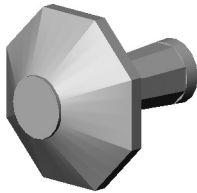
**K268** Squash Knob



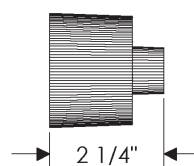
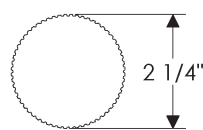
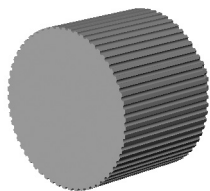
**K580** Maddox Knob



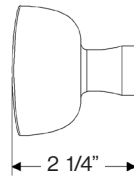
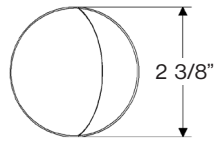
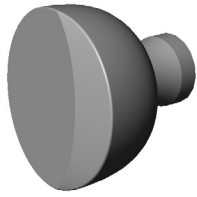
**K10010** Quatrafoil Knob  
*Roger Thomas Collection*



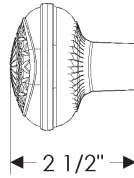
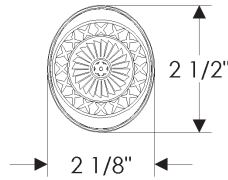
**K10015** Octagonal Knob  
*Roger Thomas Collection*



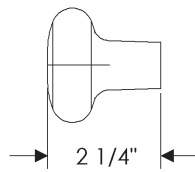
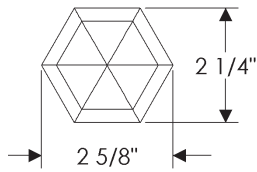
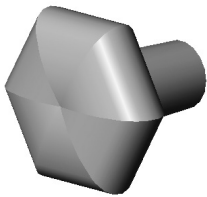
**K10020** Flute Knob  
*Roger Thomas Collection*  
• Not to be used with privacy spring latch sets.



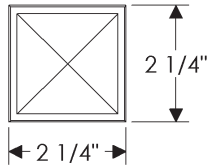
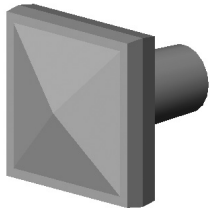
**K10300** Flora Knob



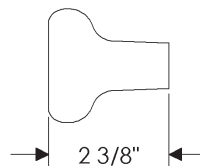
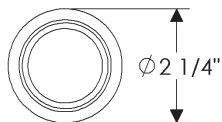
**K10801** Sundial Knob



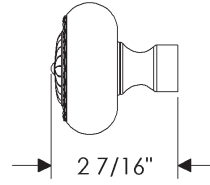
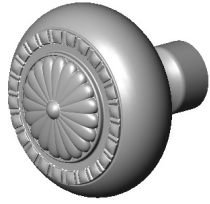
**K10802** Kettle Knob



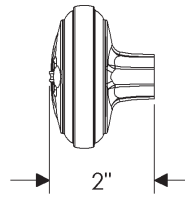
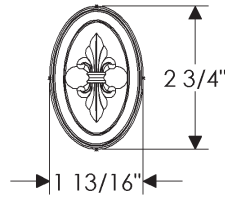
**K21001** Mack Knob



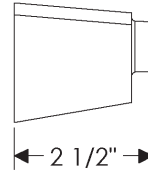
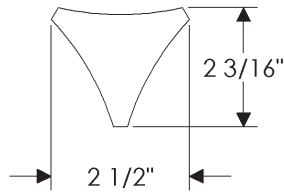
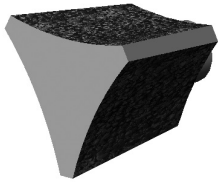
**K30144** Smith Knob



**K30164** Crown Knob

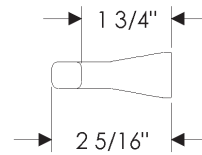
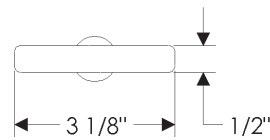


**K30184** Cabernet Knob

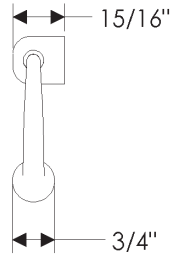
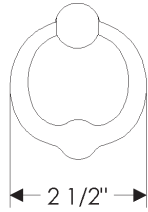
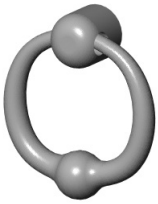


**K30301** Trousdale Knob  
*Kravitz Design Collection*

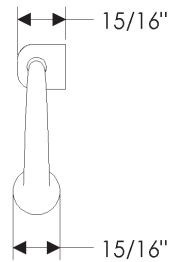
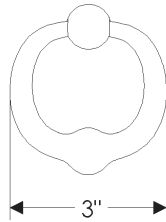
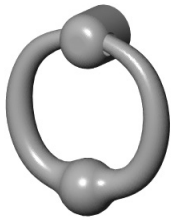
• Not to be used with privacy spring latch sets.



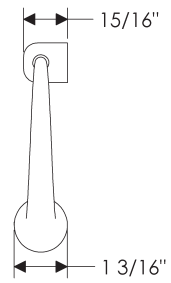
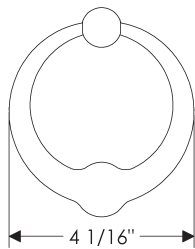
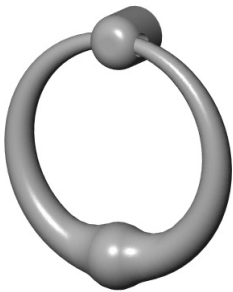
**T300** T Handle



**RP25** Ring Pull 2 1/2"



**RP3** Ring Pull 3"



**RP4** Ring Pull 4"

**NOTE: GRIPS ARE NOW ONLY FEATURED IN SECTION "G".**