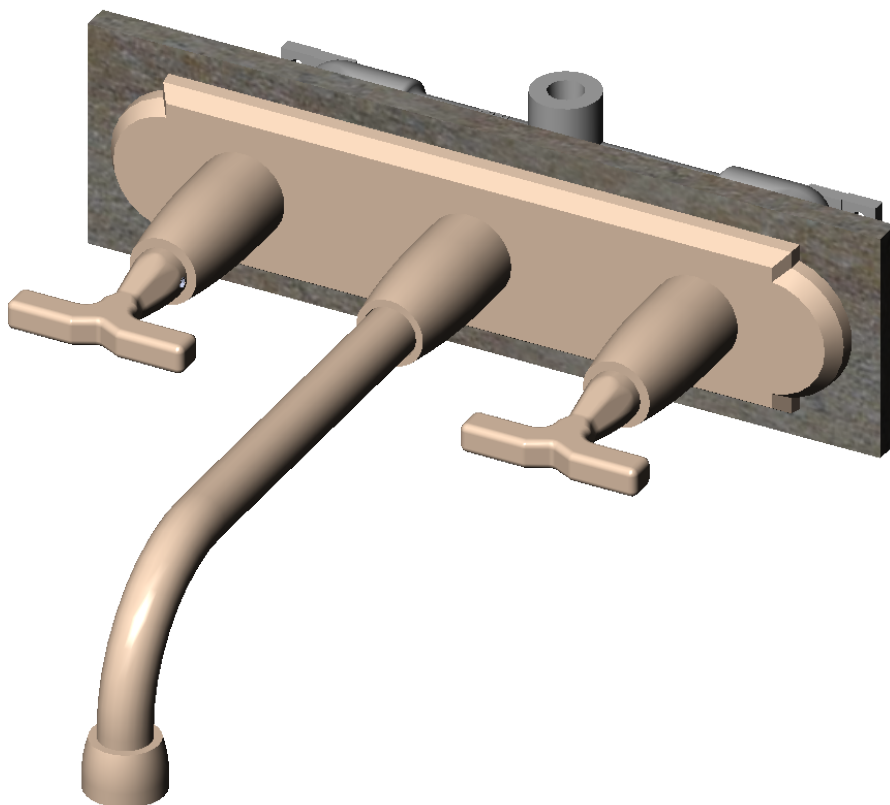


WALL MOUNT FAUCET INSTALLATION INSTRUCTIONS

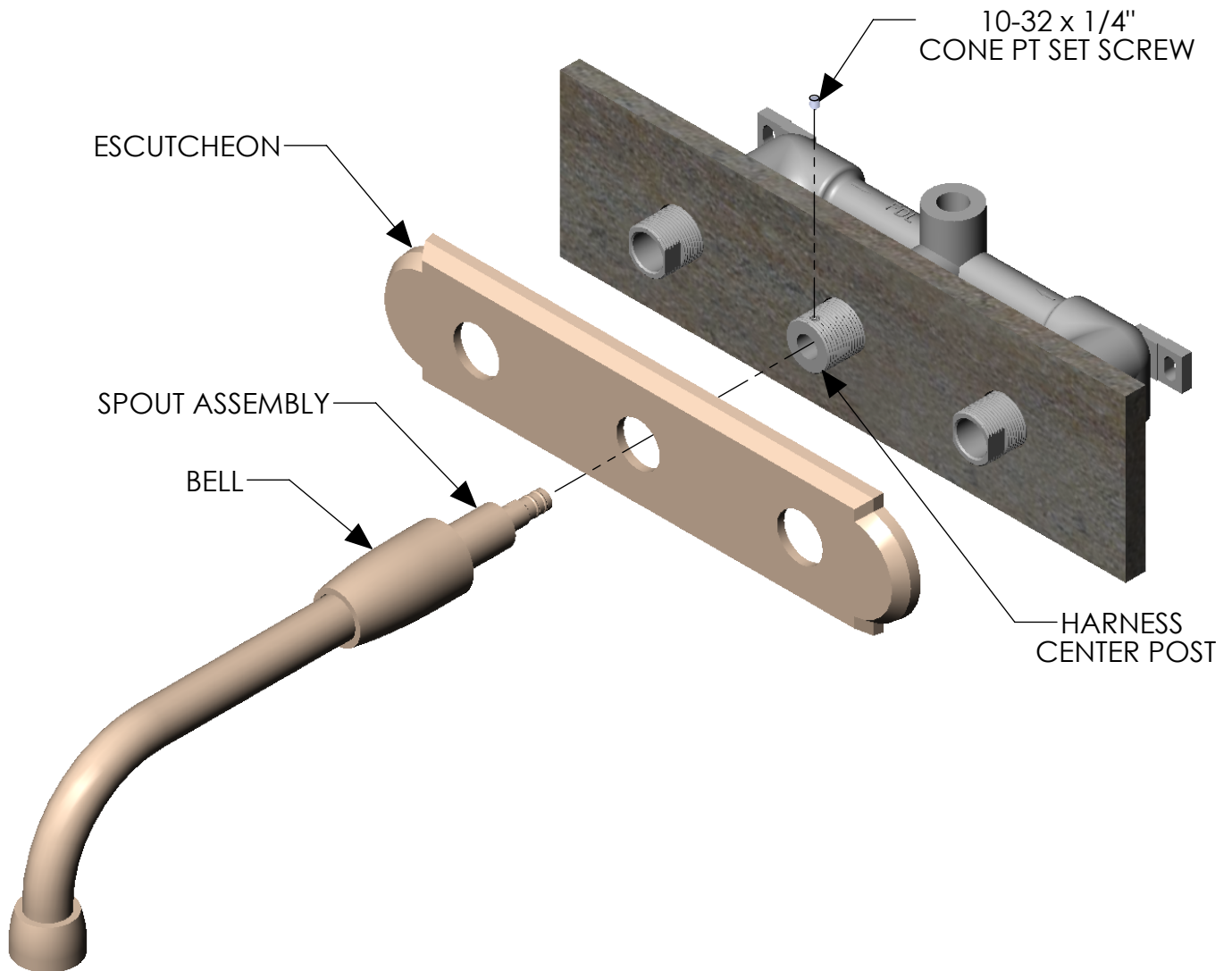


TOOLS REQUIRED: 3/16" ALLEN WRENCH
3/32" ALLEN WRENCH
HACKSAW OR EQUIVALENT

ROCKY MOUNTAIN™
H A R D W A R E

1030 Airport Way Post Office Box 4108 Hailey, Idaho 83333
Toll Free (888) 788.2013 Fax (208) 788.2577
rockymountainhardware.com

SPOUT INSTALLATION

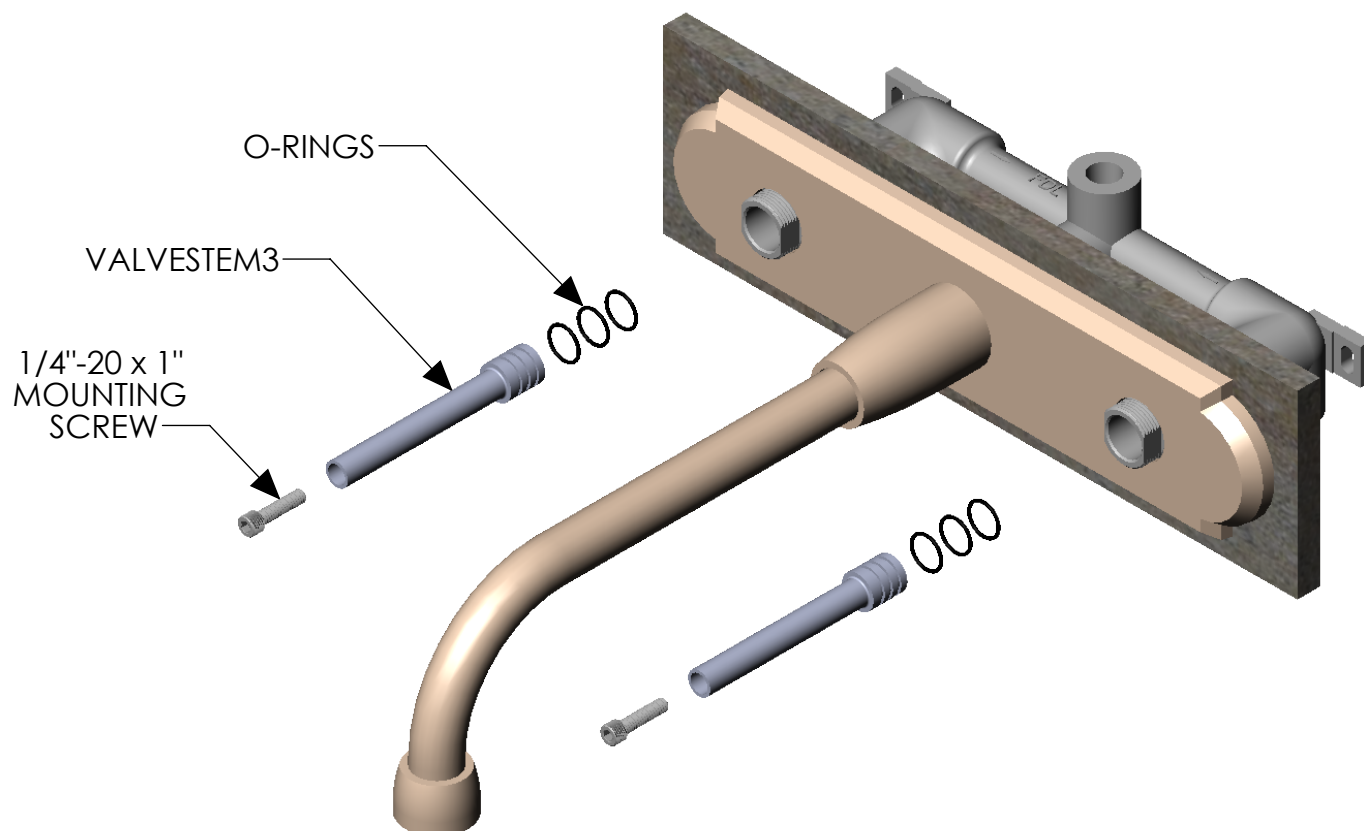


- 1) Verify harness center post protrudes 7/8" from finished wall.
- 2) Place escutcheon over harness posts. (escutcheon optional)
- 3) Slide bell over spout assembly. Insert spout into harness center post and tighten set screw.
- 4) Thread bell onto harness center post until tight against escutcheon or finished wall.

ROCKY MOUNTAIN™
H A R D W A R E

1030 Airport Way Post Office Box 4108 Hailey, Idaho 83333
Toll Free (888) 788.2013 Fax (208) 788.2577
rockymountainhardware.com

VALVE STEM INSTALLATION

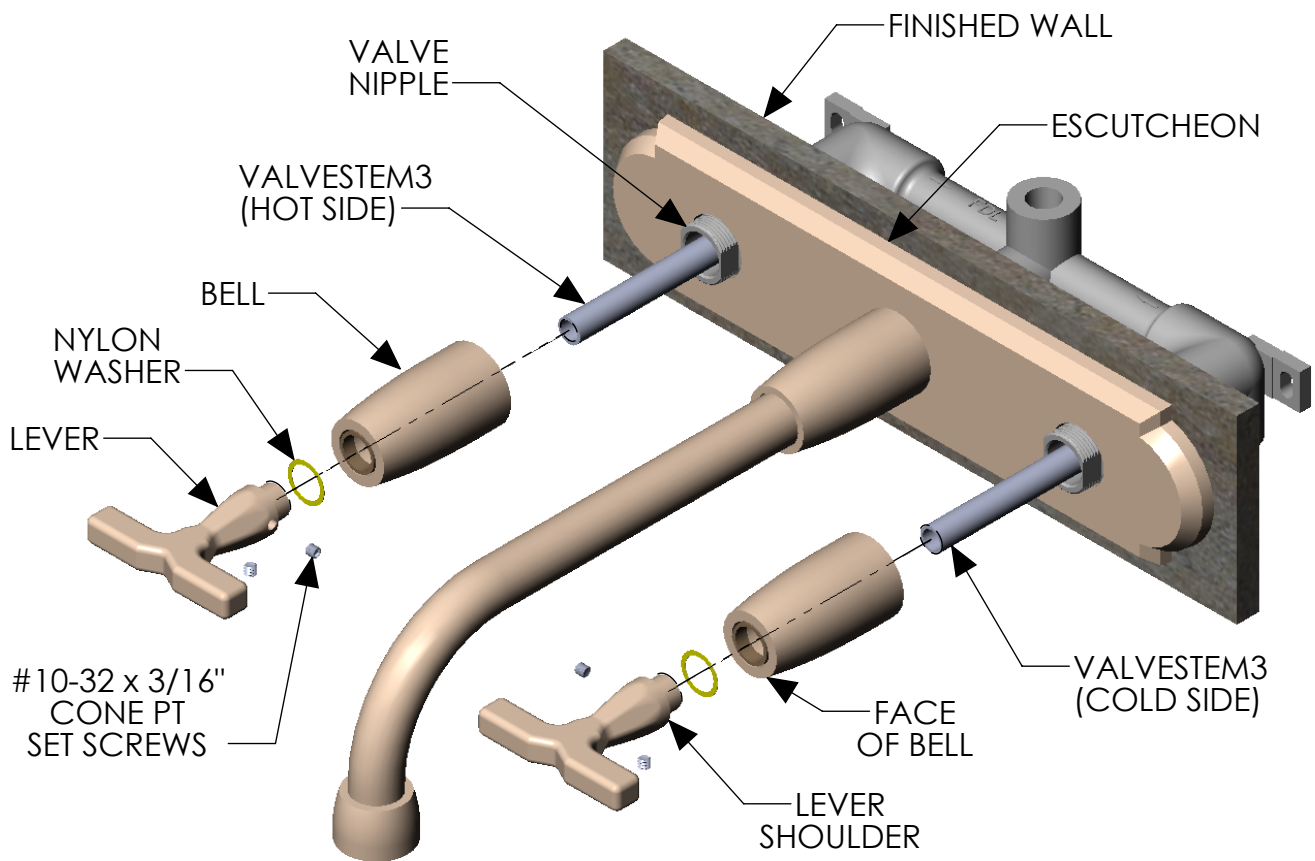


- 1) O-Rings on VALVESTEM3 add resistance to rotation.
NOTE: (Inspect after 10 years).
- 2) Use 1/4"-20 mounting screw to secure Valvestem3.

ROCKY MOUNTAIN™
H A R D W A R E

1030 Airport Way Post Office Box 4108 Hailey, Idaho 83333
Toll Free (888) 788.2013 Fax (208) 788.2577
rockymountainhardware.com

LEVER INSTALLATION



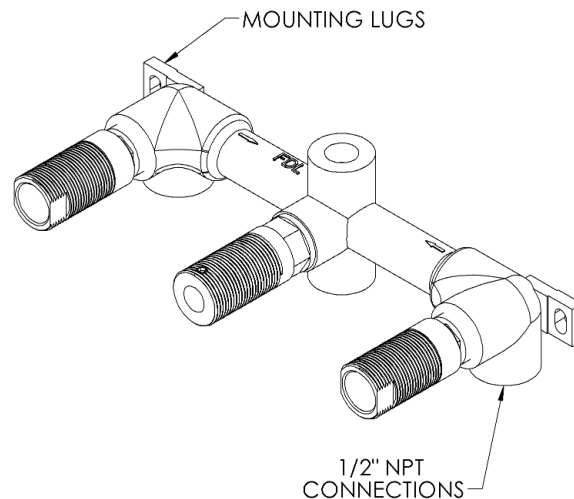
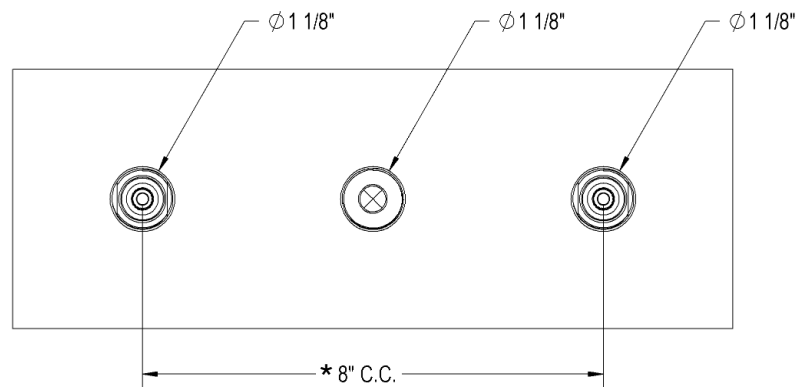
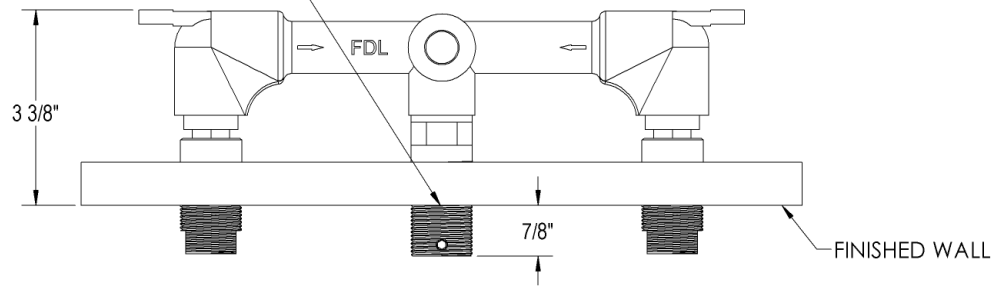
- 1) Thread bells over valve nipples until tight against escutcheon or finished wall.
- 2) Turn valves to the closed position by rotating valvestem3. The cold valve will close by rotating counter clockwise and the hot valve will close by rotating clockwise.
- 3) Slide levers over valvestem3 until it bottoms out. Measure distance from face of bell to shoulder of lever or knob. This will be the length to reduce valvestem3 with hacksaw or equivalent. Install levers in the desired closed orientation leaving approximately 1/32" gap between the shoulder of the lever and bell. Typically levers are closed in the horizontal position. Tighten both set screws

ROCKY MOUNTAIN™
H A R D W A R E

1030 Airport Way Post Office Box 4108 Hailey, Idaho 83333
Toll Free (888) 788.2013 Fax (208) 788.2577
rockymountainhardware.com

WMF HARNESS INSTALL

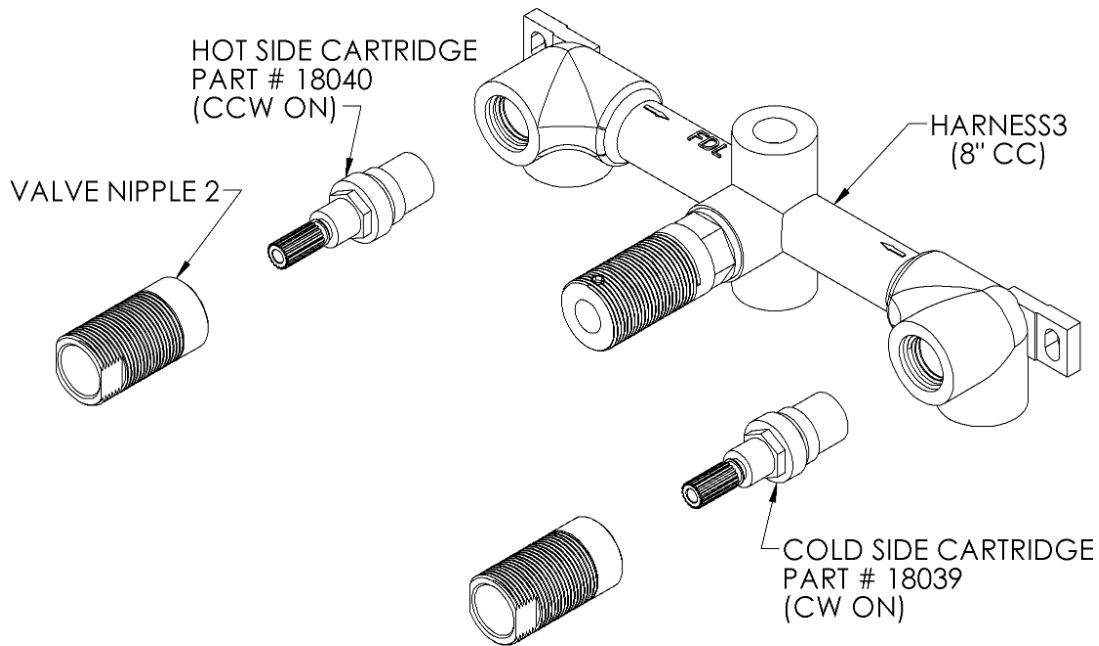
NOTE: RED DOT ON CENTER POST OF ROUGH-IN SHOULD LINE UP WITH THE FACE OF THE FINISHED WALL.



* Confirm with actual harness (7" C.C. prior to 2018).

ROCKY MOUNTAIN®
H A R D W A R E

WMF CARTRIDGE REPLACEMENT INSTRUCTIONS



WARNING:

Water supply must be shut off prior to removing cartridges and valve nipples.

- 1 Break apart old cartridge from valve nipple
- 2 Replace cartridge
- 3 Using a 5/8" deep socket, tighten cartridge to 25ft-lbs
- 4 Using a 7/8" wrench, tighten the valve nipple to the cartridge to 20 ft-lbs