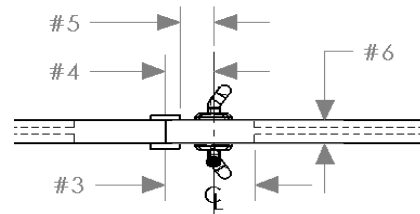


Sliding Door Information

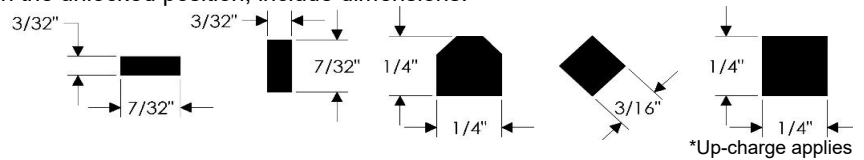
1. Manufacture _____ (Pella, Marvin, etc.)
2. Function _____ (Patio, Entry, or Dummy)
3. Stile Width _____ (Inches)
4. Back Set _____ (Inches)
5. Back Set _____ (Inches)
From jamb with door closed
6. Door thickness _____ (Inches)
7. Handing? _____ (OX, XO,... etc)

SLIDING DOOR PLAN VIEW



8. Hand sketch insert orientation with door in the unlocked position, include dimensions.

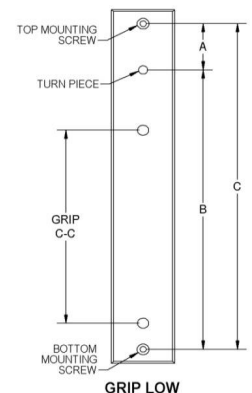
Examples of typical inserts & orientations:



9. Hardware projection limitations? _____ (i.e. for screen door) Specify Int, Ext or both? _____
10. Mounting hole location:
 - a. Use existing mounting holes: YES (If yes, select option. See #11)
NO (If no, standard RMH spacing will be provided)
11. Screw Spacing check box below or supply custom screw spacing

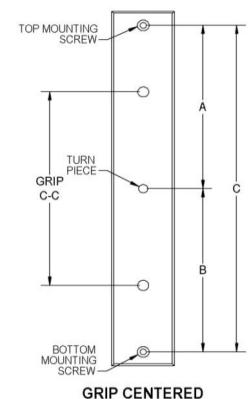
GRIP LOW

MANUFACTURER	DIM A	DIM B	DIM C
HOPPE	1-3/4" (1.772")	7-3/8" (7.362")	9 -1/8" (9.134")
JELDWEN (A)	1-13/16" (1.818")	5-7/16" (5.427")	7-1/4" (7.245")
JELDWEN (B)	1-15/16" (1.945")	8-5/16" (8.300")	10-1/4" (10.245")
KOLBE	1-31/32" (1.969")	8-9/32" (8.277")	10-1/4" (10.246")
MARVIN	1-9/16" (1.584")	9-5/8" (9.643")	11-1/4" (11.227")
MARVIN INTEGRITY	1-15/16" (1.945")	9-31/32" (9.975")	11-15/16" (11.920")
PELLA	23/32" (.700")	7-5/16" (7.300")	8.000"
ANDERSEN	1-15/16" (1.950")	9-13/16" (9.800")	11-3/4" (11.750")
SIERRA PACIFIC	1-3/4" (1.771")	7-3/8" (7.361")	9-1/8" (9.132")
WINDSOR	1-31/32" (1.969")	9-15/16" (9.951")	11-15/16" (11.920")
CUSTOM / OTHER			



GRIP CENTERED

MANUFACTURER	DIM A	DIM B	DIM C
JELDWEN	2-23/32" (2.718")	1-1/4" (1.219")	3-15/16" (3.937")
EAGLE	1-1/4" (1.219")	2-23/32" (2.718")	3-15/16" (3.937")
MARVIN	4-15/16" (4.938")	4-15/16" (4.938")	9-7/8" (9.875")
MARVIN	1-15/16" (1.945")	1-15/16" (1.945")	3-31/32" (3.890")
CUSTOM / OTHER			



Purchase Order _____

Custom trim is non-returnable.

By signing below, you are confirming the above information is correct and giving Rocky Mountain Hardware approval to match information provided. This sheet will be the approval for the custom hardware you've requested. I have read, understand, approve and take full responsibility by signing below.

Approval Signature _____

Date: _____

Rocky Mountain

H A R D W A R E

1020 Airport Way Hailey, Idaho 83333 USA

toll free 888.788.2013 • ph. 208.788.2013 • fax 208.788.2577

info@rockymountainhardware.com

www.rockymountainhardware.com

202202