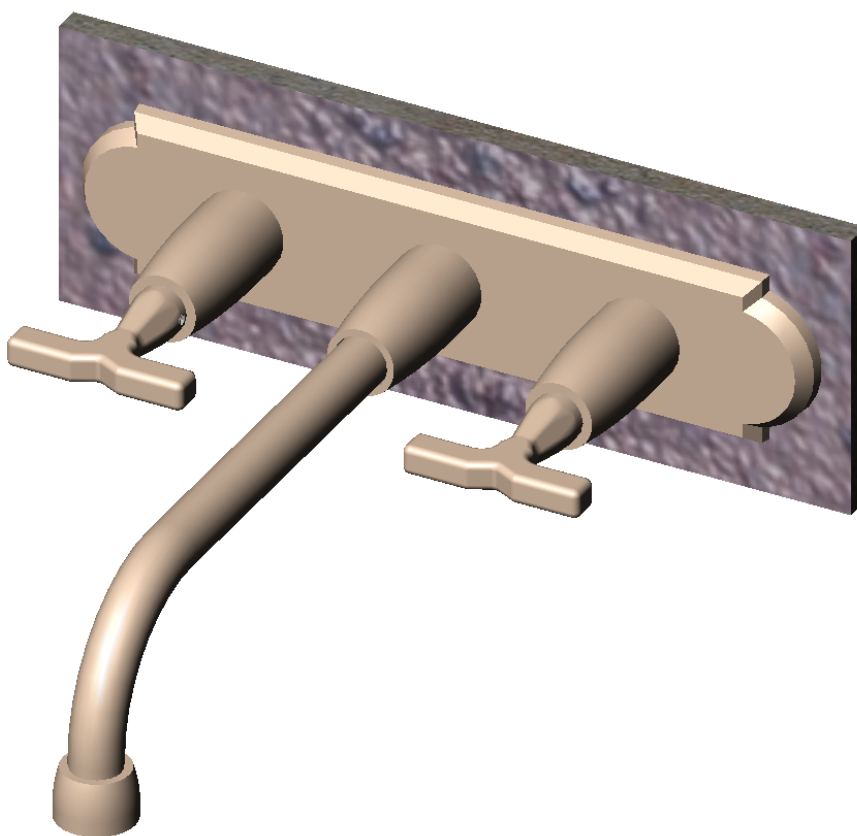


# WALL MOUNT FAUCET INSTALLATION INSTRUCTIONS

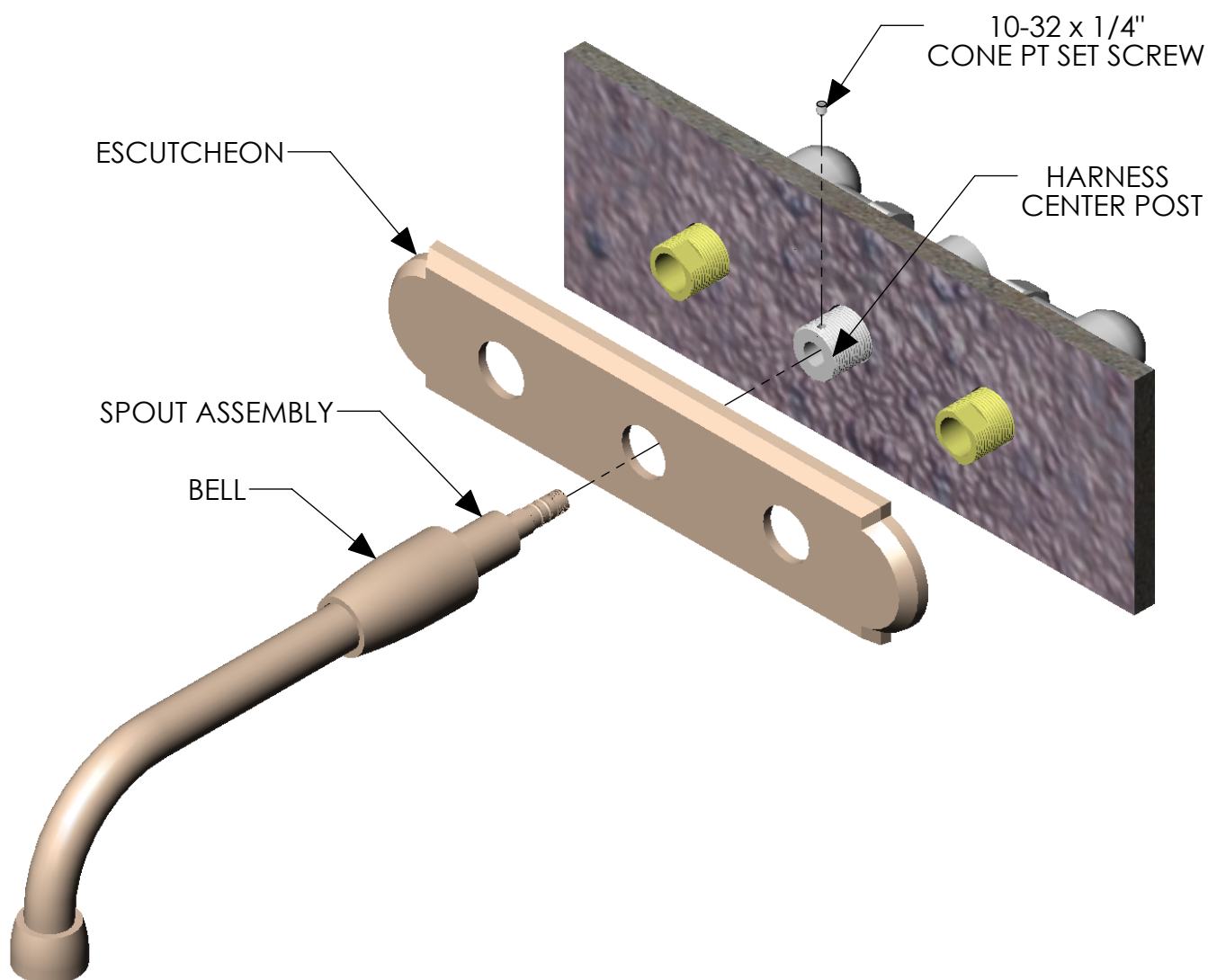


TOOLS REQUIRED: 1/4" FLAT HEAD SCREW DRIVER  
3/32" ALLEN WRENCH  
3/16" DRILL BIT AND DRILL



1020 Airport Way Post Office Box 4108 Hailey, Idaho 83333  
Toll Free (888) 788.2013 Fax (208) 788.2577  
[rockymountainhardware.com](http://rockymountainhardware.com)

# SPOUT INSTALLATION

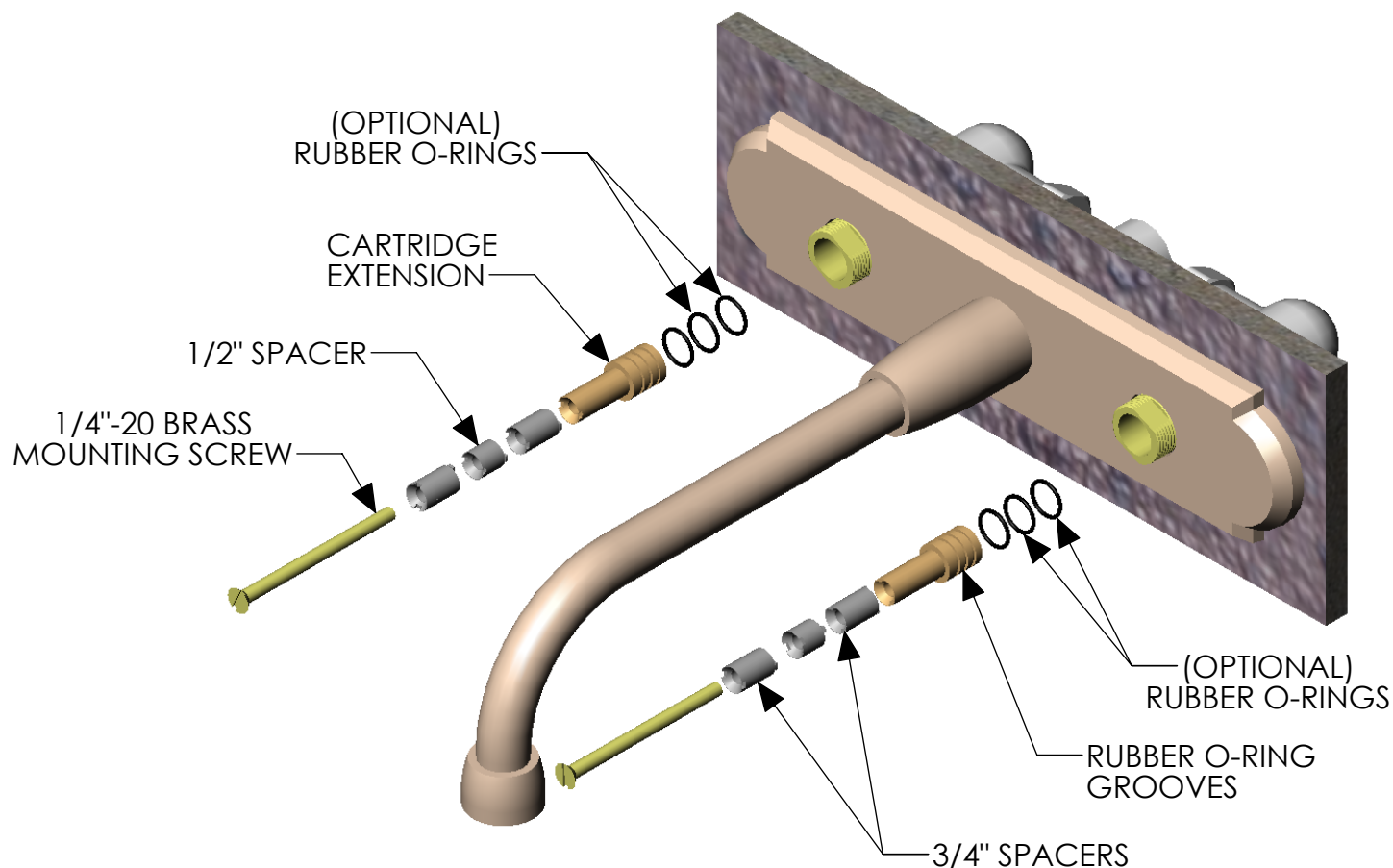


- 1) Verify threaded center spout of harness protrudes 7/8" minimum from finished wall. (If harness protrudes less than 7/8" call 1-888-788-2013 for recommendations.)
- 2) Place escutcheon over harness posts. (escutcheon optional)
- 3) Slide bell over spout assembly. Insert spout into harness center post and tighten set screw.
- 4) Thread bell onto harness center post until tight against escutcheon or finished wall.



1020 Airport Way Post Office Box 4108 Hailey, Idaho 83333  
Toll Free (888) 788.2013 Fax (208) 788.2577  
rockymountainhardware.com

# VALVE CARTRIDGE EXTENSIONS INSTALLATION

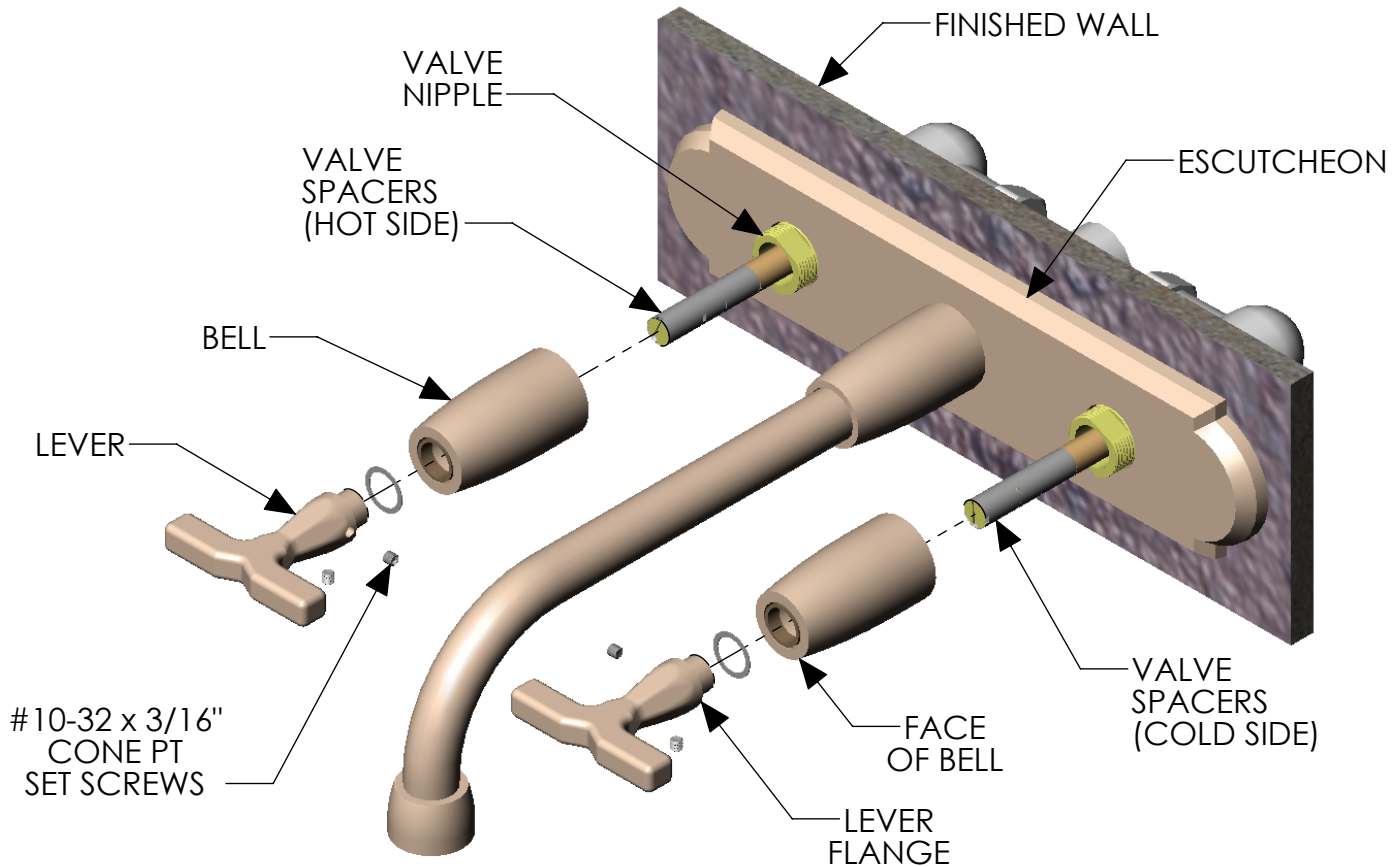


- 1) Add or remove **optional** rubber o-rings to adjust torque required to rotate levers. (Note: Both **optional** rubber o-rings may be removed for small levers.)
- 2) Use 1/4"-20 brass mounting screw to secure cartridge extension and spacers as required. (Note: The number and length of spacers may vary for each application.)



1020 Airport Way Post Office Box 4108 Hailey, Idaho 83333  
 Toll Free (888) 788.2013 Fax (208) 788.2577  
[rockymountainhardware.com](http://rockymountainhardware.com)

# LEVER INSTALLATION PG 1

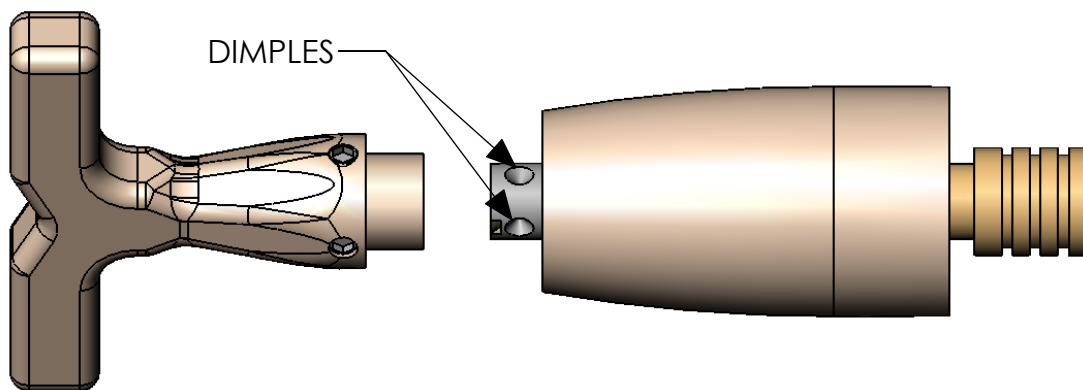
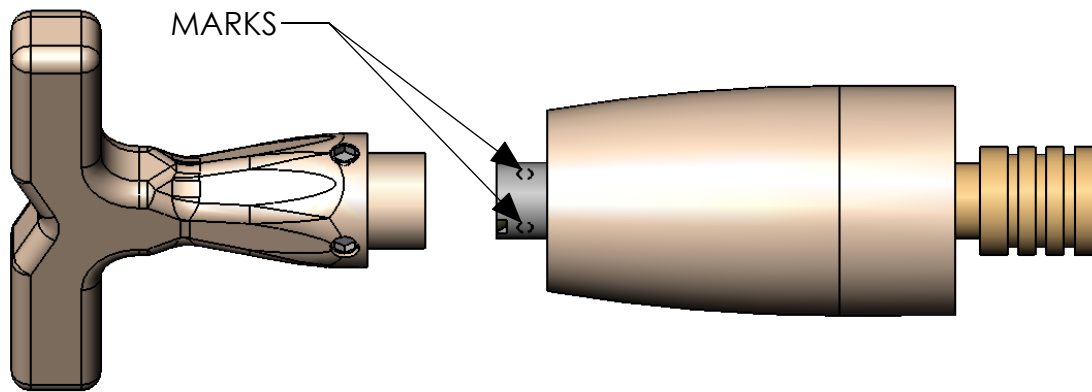


- 1) Thread bells over valve nipples until tight against escutcheon or finished wall.
- 2) Turn valves to the closed position by rotating valve spacers. The cold valve will close by rotating counter clockwise and the hot valve will close by rotating clockwise.
- 3) Slide levers over valve spacers in the desired closed orientation leaving approximately 1/32" gap between lever flange and bell. Typically levers are closed in the horizontal position. Tighten both set screws on each lever to leave a mark on the valve spacers.

**ROCKY MOUNTAIN™**  
H A R D W A R E

1020 Airport Way Post Office Box 4108 Hailey, Idaho 83333  
Toll Free (888) 788.2013 Fax (208) 788.2577  
rockymountainhardware.com

# LEVER INSTALLATION PG 2



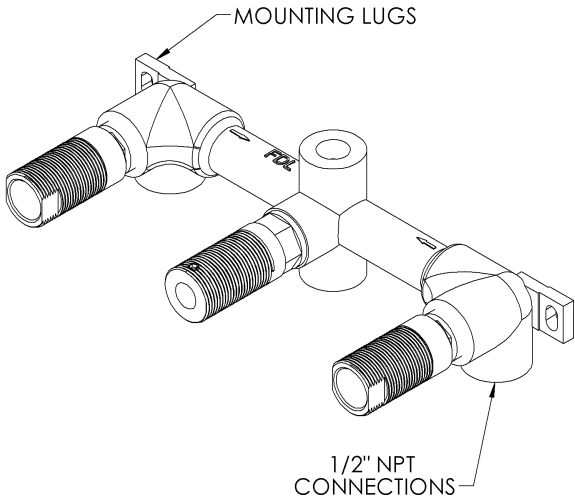
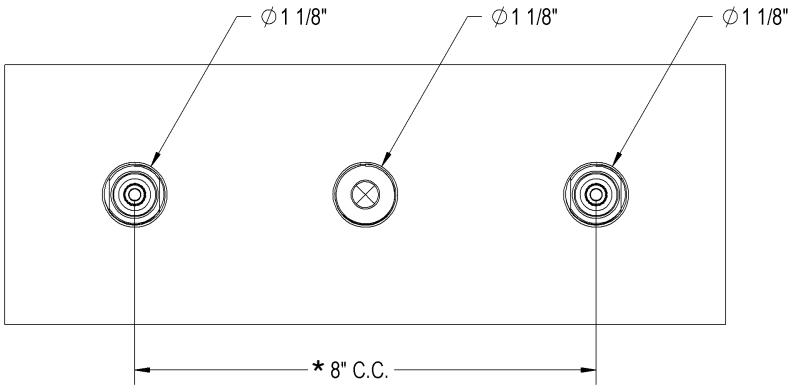
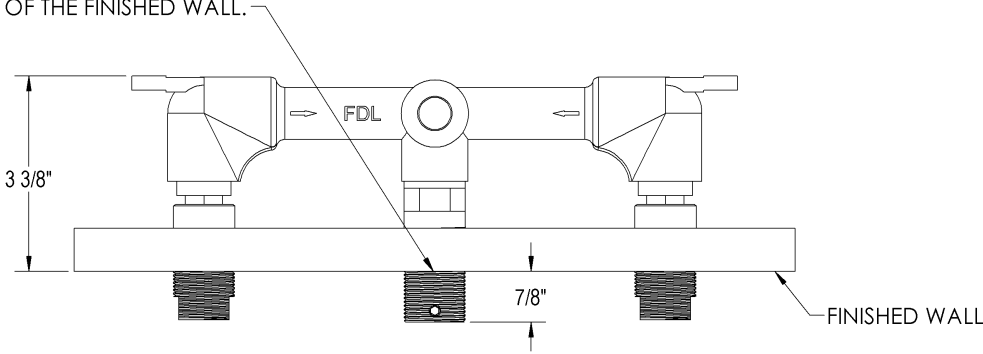
- 4) Loosen set screws and remove levers.
- 5) Using a 3/16" drill bit, drill valve spacer 1/16" deep in center of marks made by tightening set screws in step 3 of lever installation. (CAUTION: DO NOT DRILL DEEPER THAN THE BEVEL OF THE DRILL BIT)
- 6) Re-install levers over valve spacers and tighten set screws so they fall into dimples created in step 5 of lever installation.



1020 Airport Way Post Office Box 4108 Hailey, Idaho 83333  
 Toll Free (888) 788.2013 Fax (208) 788.2577  
[rockymountainhardware.com](http://rockymountainhardware.com)

# WMF HARNESS INSTALL

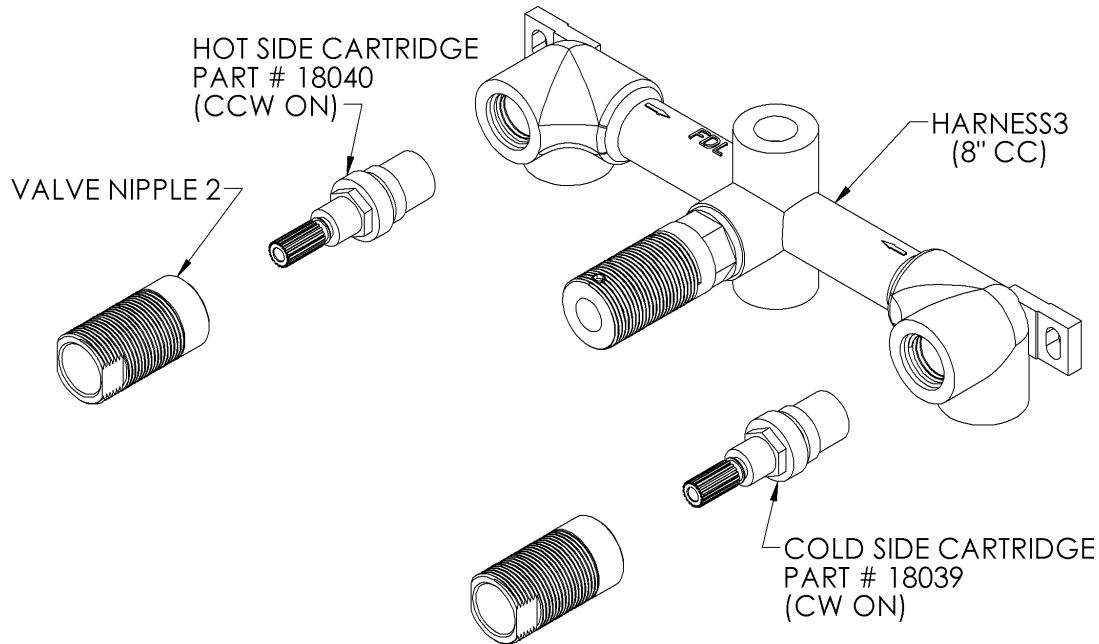
NOTE: RED DOT ON CENTER POST OF ROUGH-IN SHOULD LINE UP WITH THE FACE OF THE FINISHED WALL.



\* Confirm with actual harness (7" C.C. prior to 2018).

ROCKY MOUNTAIN®  
H A R D W A R E

# WMF CARTRIDGE REPLACEMENT INSTRUCTIONS

**WARNING:**

Water supply must be shut off prior to removing cartridges and valve nipples.

- 1 Break apart old cartridge from valve nipple
- 2 Replace cartridge
- 3 Using a 17mm deep socket tighten cartridge to 25 ft-lbs
- 4 Using a 13/16" wrench, tighten the valve nipple to the cartridge to 20 ft-lbs