

Single Barn Door Track Required Information

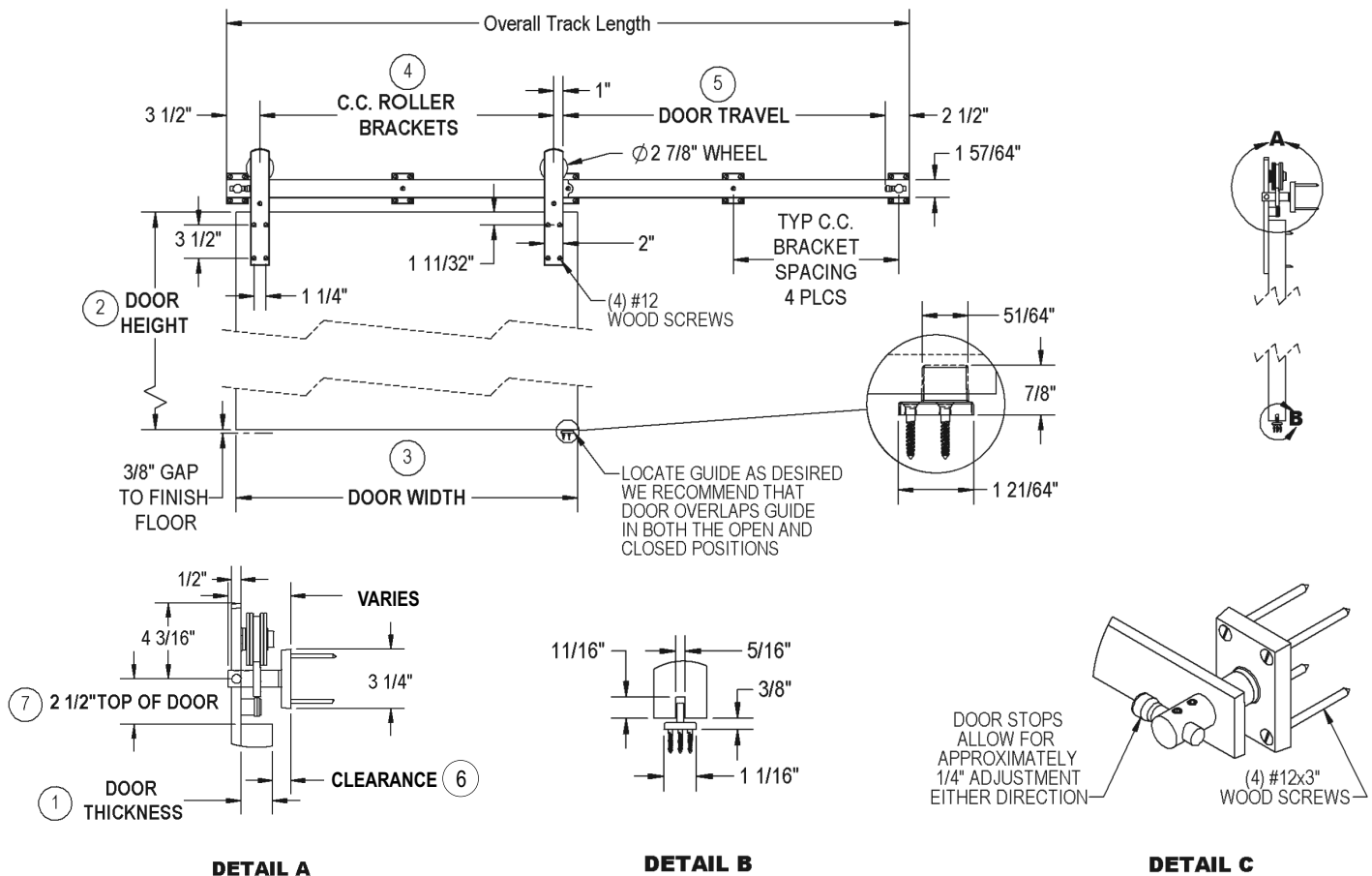
- Proper header must be installed for full length of track.
- We recommend a flush pull on interior side of door. If an interior grip is desired verify adequate clearance in open position.

Provide the following information in order to receive a customized drawing for client final approval. * (Required Field)

- * 1. Door Thickness _____
2. Door Height _____
- * 3. Door Width _____
- * 4. C to C distance of roller brackets (typically centered on door stile) _____
- * 5. Door travel (max. travel should be 1" less than door width to ensure door does not come off floor guide) _____
6. Clearance between door and mounting surface (see Detail A, 1" unless otherwise specified (3/8" minimum)) _____
7. Center line of mounting brackets to top of door (See Detail A, 2 1/2" unless otherwise specified (2 1/8" min, 3 1/2" max)) _____

Note to determine overall track length:

$$\text{LINE \#4} + \text{LINE \#5} + 7 \text{ INCHES} = \text{OVERALL TRACK LENGTH}$$



ROCKY MOUNTAIN®

H A R D W A R E

1020 Airport Way Hailey, Idaho 83333 USA

toll free 888.788.2013 • ph. 208.788.2013 • fax 208.788.2577

info@rockymountainhardware.com

www.rockymountainhardware.com

202002

Double Barn Door Track Required Information

- Proper header must be installed for full length of track.
- We recommend a flush pull on interior side of door. If an interior grip is desired verify adequate clearance in open position.

Provide the following information in order to receive a customized drawing for client final approval. * (Required Field)

- * 1. Door Thickness _____
2. Door Height _____
- * 3. Door Width _____
- * 4. C to C distance of roller brackets (typically centered on door stile) _____
- * 5. Door travel: Both doors (max. travel for each door should be 1" less than door width to ensure door does not come off floor guide) _____
6. Clearance between door and mounting surface (see Detail A, 1" unless otherwise specified ($\frac{3}{8}$ " minimum)) _____
7. Center line of mounting brackets to top of door (See Detail A, $2\frac{1}{2}$ " unless otherwise specified ($2\frac{1}{8}$ " min, $3\frac{1}{2}$ " max)) _____

Note to determine overall track length:

$$\text{LINE \#4 (x2)} + \text{LINE \#5} + \text{(LINE \#3 - LINE \#4)} + 7 \text{ INCHES} = \text{OVERALL TRACK LENGTH}$$

